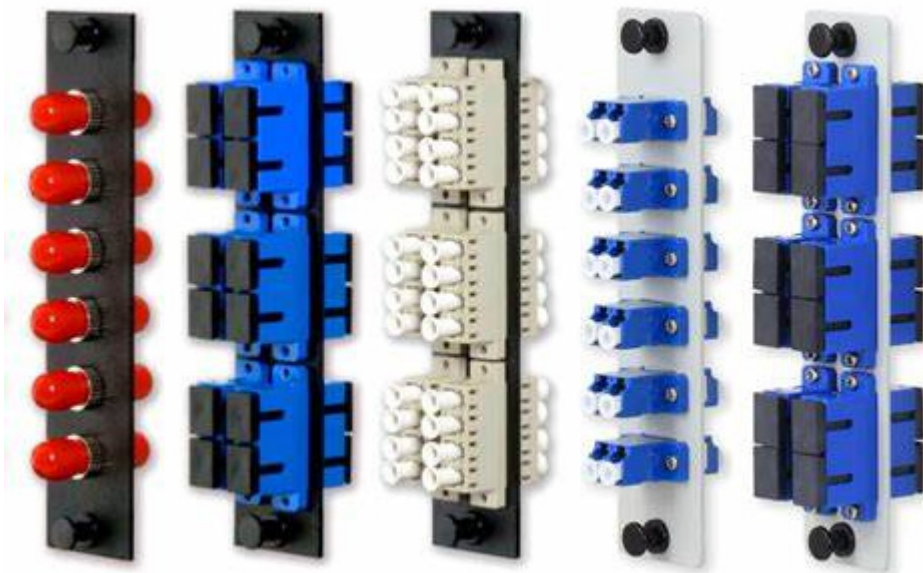


# DATASHEET

## Fiber Adapter Panel-One Piece design

Designed for 19' 1RU Adapter Panel Frame



RoHS

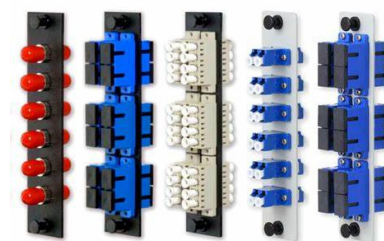


OMC INDUSTRY CO.LIMITED

2018|En version1.0

## Products Description

High quality **steel 4-12ports one piece structure adapter Panels** are available as blank plates or with LC Duplex, LC Quad, SC Simplex, SC Duplex, FC Simplex, MT-RJ, ST Simplex, E2000 Simplex and MPO/MPO adapters. OMC's Fiber Adapter Plate preloaded with fiber adapters that serve as the intermediate connection between the backbone and the patch cable, provides a more stable, compact solution for the network.



Fiber adapter Panels snap into all OMC's 19" 1RU Adapter Panel Frame and wall mount cabinets for easy network deployment or moves, adds, and changes. It is suitable for 1U 19" frame rack mount or cabinet, Designed for backbone-to-backbone and backbone-to-horizontal fiber cabling.

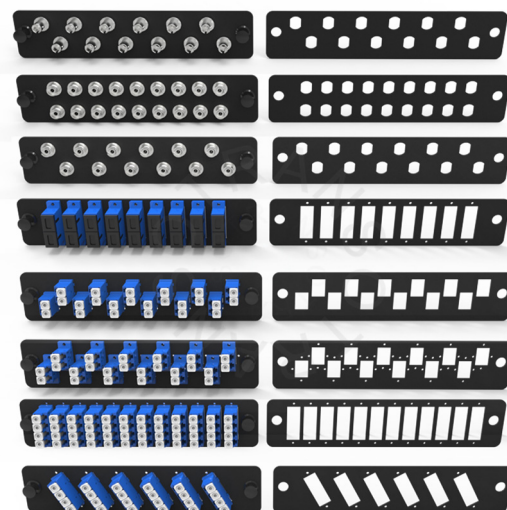
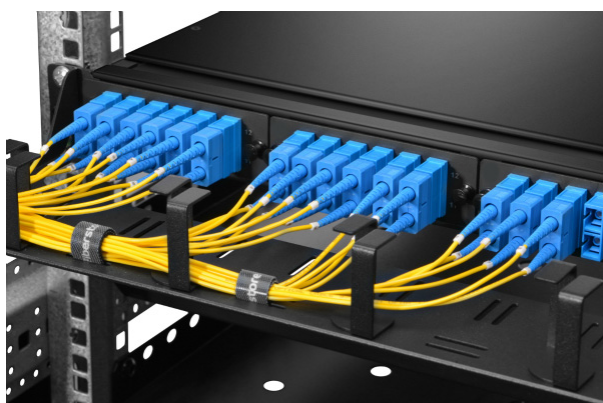
## Products Details

Part No.	P0xxxx	No.of Adapter/Port	6/8/12/16/24
Fiber Count	6/8/12/16/24	Adapter Type	LC Duplex, LC Quad, SC Simplex, SC Duplex, FC Simplex, MT-RJ, ST Simplex, E2000 Simplex MPO/MPO adapters
Plate	1.5mm CRS Cold rolled steel	Dimensions (WxL)	35x109mm For 4 FAP Plate 35x130mm For 3 FAP Plate (LGX size) 35x197mm For 2 FAP Plate
RoHS Compliancy Status	Compliant	Application	Mount In a 19" Network Rack Plate

## Features:

- Stronger platform with 1.5mm SPCC, to install customs array of adapters
- Evenly-distributed openings to suitable space for patching
- Fully loaded with fiber couplers to save much cost
- Small Device to High-Effective Management
- Easy to install for better deployment and expand your network for interconnection and cross-connection inside the rack mount and cabinet
- All adapter Plates are available in high density.

## Application





## 1 piece structure Adapter Panel

### Order Index

Structure	-	Match Plates	-	Adapter Port	-	Port Qty	-	Color
P0-1 piece design		2-2 FAP Adapter Panel Frame		1-LC Duplex		0-Blank plate		0- Black
		3-3 FAP Adapter Panel Frame		2-LC Quad		1-6 ports		1-Grey
		4-4 FAP Adapter Panel Frame		3-SC Simplex		2-8 ports		
				4-SC Duplex		3-12ports		
				5-FC Square type		4-16 ports		
				6-FC D hole type		5- 24 ports		
				7- ST Simplex		6-32 ports		
				8-E2000 Simplex		7-48 ports		
				9-MT-RJ				
				0-MPO/MTP				
				B-Blank plate				