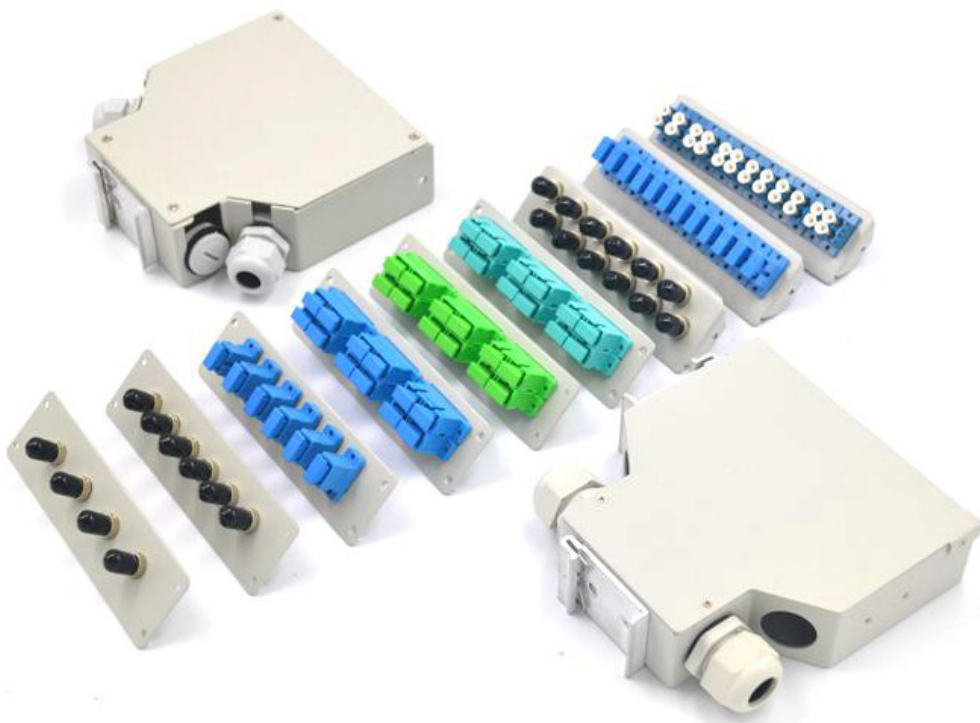


DATASHEET

Din Rail Splice&Connection Box

For FTTH, PON system



RoHS



OMC INDUSTRY CO.LIMITED

2018|En version1.0

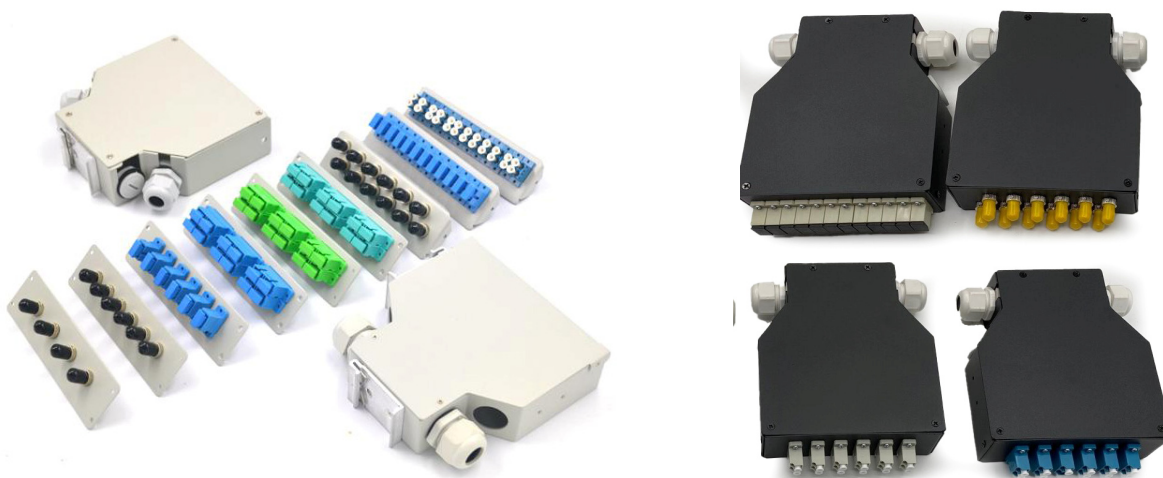


Description

Din Rail Splice box is metal box special designed to be snapped on din rail, It's used for the distribution and terminal connection for various kinds of optical fiber system, especially suitable for mini-network terminal distribution, in which the optical cables, patch cores or pigtails are connected. This compact enclosure makes it possible to direct terminations or fusion splices in much smaller protected areas.

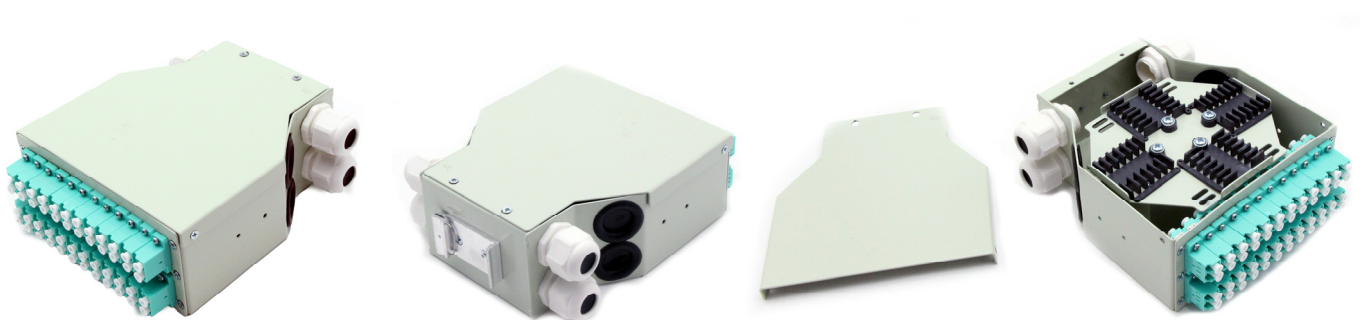
Our DIN Rail Splice Box can make 4 cores,8ports,12cores,24cores,and 48ports with different adapter Plate ,such as ST Simplex Adapter Plate, LC Duplex Adapter Plate, LC Quad Adapter Plate, SC Simplex Adapter Plate, SC Duplex Adapter Plate ,FC Simplex Adapter Plate.

4-24cores Din Rail Splice box



Part No.	Dimension(mm)	Material	Max capacity cores	Fiber Ports
DRCB-xxxx	130 x 129 x 36(1U)	Cold-roll steel, electrostatic painting	24	FC, SC, ST, LC ...

24-48cores Din Rail Splice box



Part No.	Dimension(mm)	Material	Max capacity cores	Fiber Ports
DRCC-xxxx	130 x 129 x 65(1.5U)	Cold-roll steel, electrostatic painting	48	FC, SC, ST, LC ...

Accept custom size for special demand

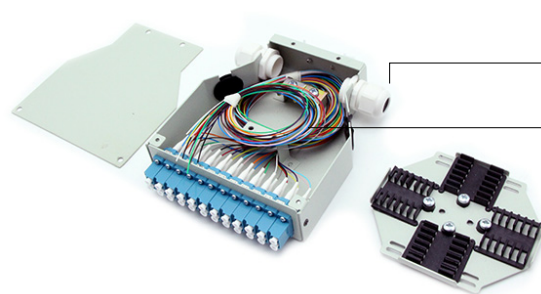


Din Rail Splice&Connection Box

Products Detail

- 2/4pcs cable entry/exit ports; 12-48pcs pigtail entry/exit ports
- Max. 24pcs adapters can be loaded
- Integrated splice holders (fusion splices)
- Rear or aside DIN rail fixation fixture
- 2/4rear entries (**PG 11 or PG 13.5 cable gland**)
- Grey color (RAL 7035) Or Black
- **OEM Service is available.**

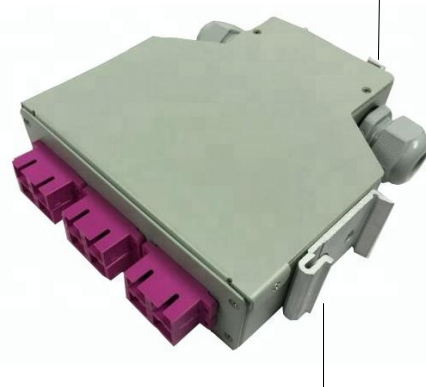
- Rear DIN rail fixation fixture (Default)



Cable gland

Aside DIN rail fixation fixture (add if customer need it)

Pigtail: 1m or 1.5m



Application:

- Suitable for Pigtail, ribbon and bunch cable connect distribution
- Used for Din Rail mounted applications
- Used in FTTH, Telecommunications, CATV etc.



Order Index:

Products	Fiber port	Port Qty	Fiber mode	Load
DRCB-1U Din Rail Splice Box	1- LC DX	04-4 ports	0- Empty box	0-Empty Box
DRCC-1.5U Din Rail Splice Box	2- LC Quad	06-6 ports	1- G657A1	1- Loaded with pigtail and adapter
	3- SC SX	08-8 ports	2-G657A2/B2	2-Loaded with adapter
	4- SC DX	12-12ports	3-G657B3	
	5- FC Square	16-16 ports	4-BIF OM1	
	6- FC D hole	24-24 ports	5-BIF OM2	
	7-ST D hole		6-BIF OM3	
			7-BIF OM4	
			8-BIF OM5	