

DATASHEET

SMA905/SMA906 Adapter



RoHS



OMC INDUSTRY CO.LIMITED

Description

The SMA adapter has two internal constructions, one is to align the ferrule of the SMA connector with a copper sleeve, and the other is to have a sleeve at the joint without the sleeve, which is directly connected by the metal forming connection hole. According to the use of the SMA jumper, the alignment accuracy of the SMA adapter is generally not strict with the SC adapter, and the SMA jumper generally only has a multimode jumper, so the SMA adapter generally does not have a single multimode. SMA adapters are widely used in communication equipment and various test instruments, especially in military equipment and medical equipment.

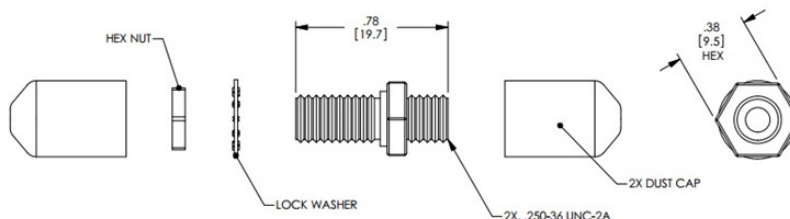
Products Materials

Parts name	Material	Color
Housing body	Nickel plated brass/Zinc alloy	-
Sleeve	High precision Ceramic sleeve	White
Dust Cover	Rubber	Red/Black/Metal

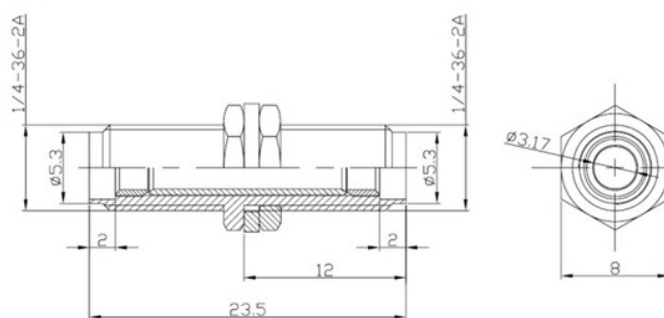
Optical Specifications

Test item	(SM-9/125) UPC	(SM-9/125) APC	MM PC
Insertion Loss	$\leq 0.2\text{dB}$	$\leq 0.2\text{dB}$	$\leq 0.2\text{dB}$
Return Loss	$\geq 50\text{ dB}$	$\geq 60\text{ dB}$	$\geq 35\text{ dB}$
Durability (500 Mating)	0.1dB Max.		
Withdrawal force (g/f)	2.0N ~ 5.9N (200gf ~ 600gf)		
Storage Temp (°C)	-40 ~ +85		

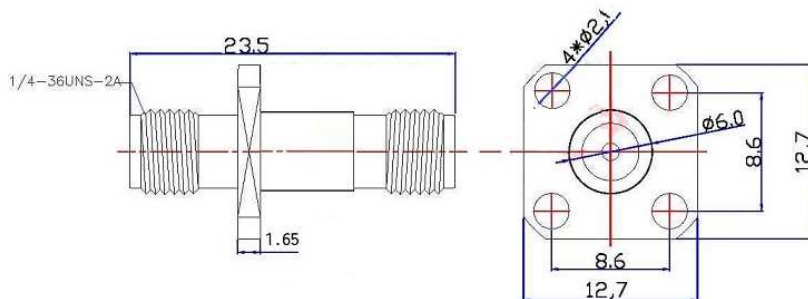
Available for Simplex of SM UPC, SM APC, MM OM1 62.5/125, MM OM2 50/125



Standard FSMA905/SMA906-With rubber dust cap



Standard FSMA905/SMA906-With Metal dust cap



Square FSMA905/SMA906-With rubber dust

Features:

- JIS C5972 Compliance
- Corrosion resistant housing
- Precision connection with sleeve
- SM and MM connector can be used interchangeably
- Low insertion loss, High Return loss
- Good interchangeability and reliability
- Meet IEC and ROHS standards
- High precision of mechanical dimensions Accuracy

Application:

- Patch panels, ODF and other optical connections.
- Optical networks demarcation and monitoring point

Order index

Products	Ports	Fiber Port	Structure	Body Material	Cap Color
H6- Fiber adapter	1-Simplex	8 - SMA	1- D hole	1 - Nickel plated brass	1 - red Rubber
	2-Duplex		2- Square type	2 - Zinc alloy	2 - Black Rubber
					3 - Green Rubber
					4 - Metal