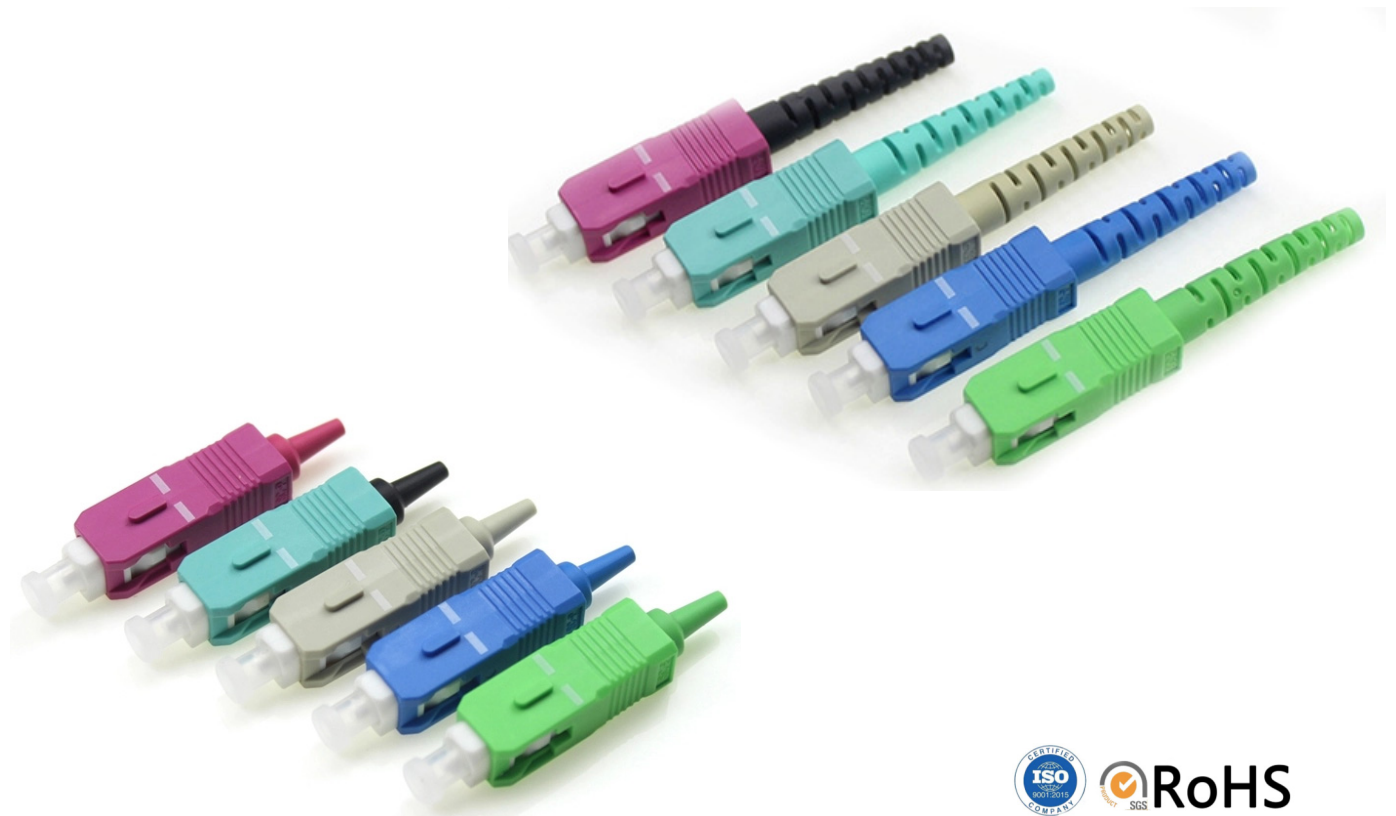


# DATASHEET

## SC Fiber Optic Connector



OMC INDUSTRY CO.LIMITED

2018|En version1.0

## Description

An optical fiber connector terminates the end of an optical fiber and enable quicker connection and disconnection than splicing. The connectors mechanically couple and align the cores of fibers so light can pass. Better connectors lose very little light due to reflection or misalignment of the fibers.

The SC was developed by the laboratories at Nippon Telegraph and Telephone (NTT) in the mid-eighties, and was one of the first connectors to hit the market following the advent of ceramic ferrules. Sometimes referred to as the 'square connector' the SC has a push-pull coupling end face with a spring loaded ceramic ferrule. Initially intended for Gigabit Ethernet networking, it was standardized into the telecommunications specification TIA-568-A in 1991 and slowly grew in popularity as manufacturing costs came down. Due to its excellent performance it dominated fiber optics for over a decade with only the ST rivalling it. Thirty years on, it remains the second most common connector for polarization maintaining applications. The SC is ideally suited for datacoms and telecoms applications including point to point and passive optical networking.

OMC manufactures many sorts of fiber connectors. Such as SC,LC,ST,FC,MU,MTRJ,E2000 ,MPO,MTP,SMA,DIN,D4 etc.

### Industrial Standard:

#### Optical Performance:

Meets Telcordia GR-326-Core issue

IL(Typical):SM<0.3dB; MM <0.3dB:

RL(Typical):SM >50dB; MM >35dB:

#### Environmental Performance:

Operating Environment: -40°C ~ + 80°C

Meets UL94-V0 Flammability Requirements

ROHS compliant

#### Mechanical Performance:

Connection Durability: 500 Matings cycles

Connector Repeatability: MM<0.2dB; SM <0.1dB

#### Application

Patch cord&pigtail produce&Manufacture

## Products Details

Fiber Connector	SC	Ferrule Material	Zirconia Ceramic 2.5mm OD
Housing	SM: Blue MM: Beige/aqua/magenta APC: Green	Boot Size	0.9mm, 2.0mm, 3.0mm
Operating Temp Range	-40~80°C	Boot color	SM: Blue//white/red/yellow MM: Beige/aqua/magenta/black APC: Green
Suit Cable	0.6-3.0mm OD cable	Available for	Not assembled Multi-Piece Pre-assembled one piece

### Boot Type



*Standard Boot*



*Square Boot*



*short Boot*

We can offer many colors boot

### Connector Housing Type

We can offer many different color Housing SC, Such as Blue, Beige, Aqua, Magenta, Black, Pink ......

### Dust cap Type

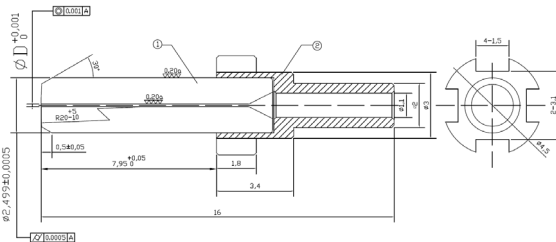


*Standard cap*



*Cap with Fix Tail*

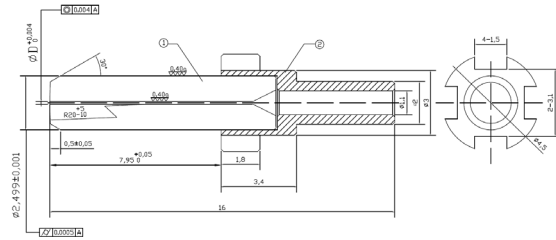
## Ferrule for FC Connector



SM UPC Ferrule for FC SM UPC Connector

Concentricity<1.0um for standard quality demand

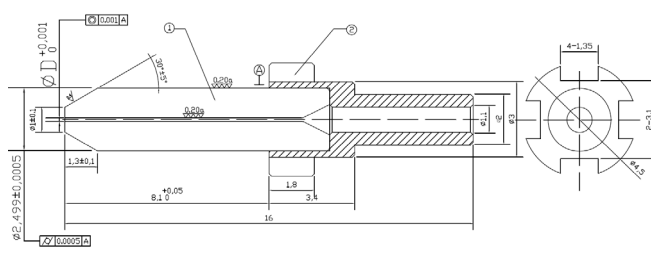
Concentricity<0.3um for IEC grade B demand



MM Ferrule for FC MM PC Connector

Concentricity<4.0um for standard quality demand

Concentricity<1.4um for IEC grade B demand

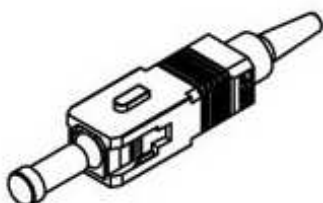
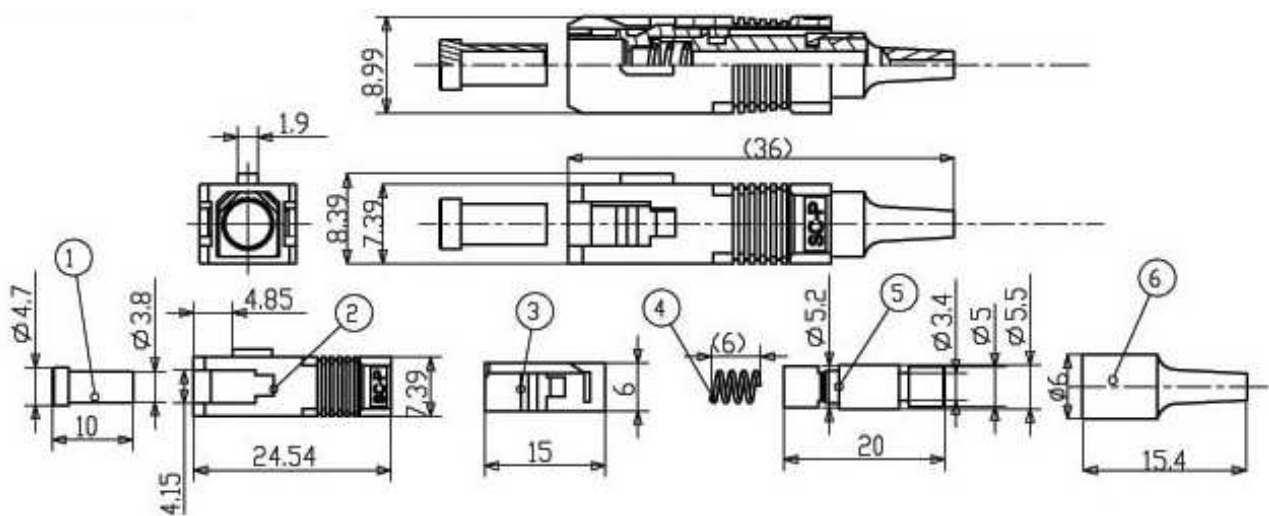


SM APC Ferrule for FC SM APC Connector

Concentricity<1.0um for standard quality demand

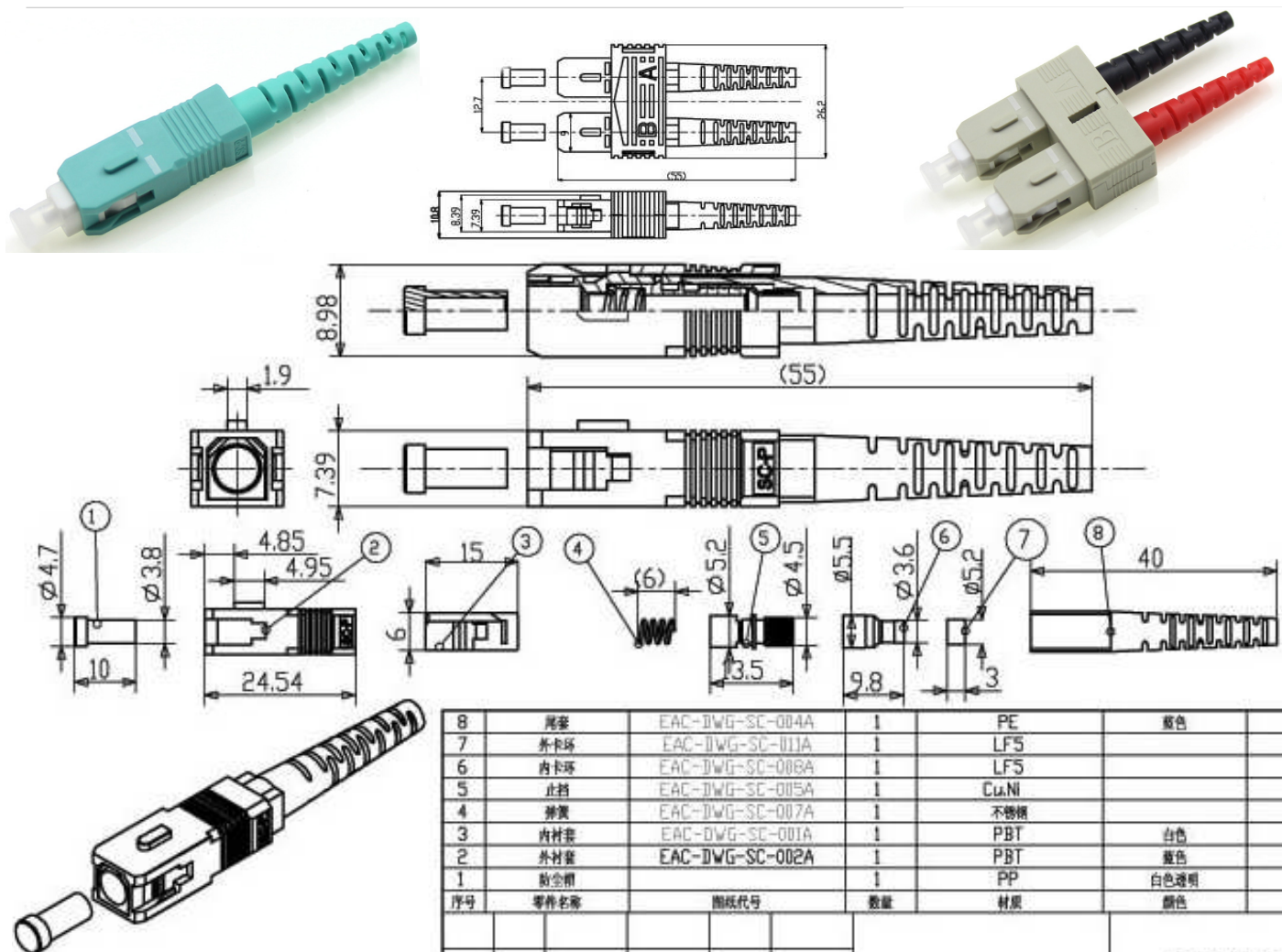
Concentricity<0.3um for IEC grade B demand

## SC 0.9mm Solid Boot Connector Drawing



6	0.9尾座	EAC-DWG-SC-003A	1	硅橡胶	蓝色	
5	止挡	EAC-DWG-SC-006A	1	Cu.Ni		
4	排簧	EAC-DWG-SC-007A	1	不锈钢		
3	内衬套	EAC-DWG-SC-001A	1	PBT	白色	
2	外衬套	EAC-DWG-SC-002A	1	PBT	蓝色	
1	前套帽	EAC-DWG-SC-008A	1	PP	白色透明	
序号	零件名称	图样代号	数量	材质	颜色	备注

## SC 2.0/3.0mm Boot Connector Drawing



### Order index

Products	Connector	SX or DX	Housing kits color	Boot Size	Boot Color	Dust cap	Assembly
G- Fiber Connector	B-SC PC	1-SM Simplex	1-Blue	1- 0.9mm round	A - Blue	1-Standard transparent	0- not assembled
	F-SC APC	2-SM Duplex	2-Green	2-2.0mm round standard Boot	E- Grey	2-Standard Green	1-Assembled
		3-MM Simplex	3-Beige	3-3.0mm round standard Boot	F-White	3-Transparent with tail cap	
		4-MM Duplex	4-Aqua	4 -2.0mm Square standard Boot	G-Red	5-Full cover cap	
			5-Magenta	5 -3.0mm Square standard Boot	H-Black		
			6-Black	6-3.0mm round short Boot	I-Yellow		
				7-Flex angle boot	L-Aqua		
				8- 90 degree boot	M-Magenta		
					N-2 colors for DX		