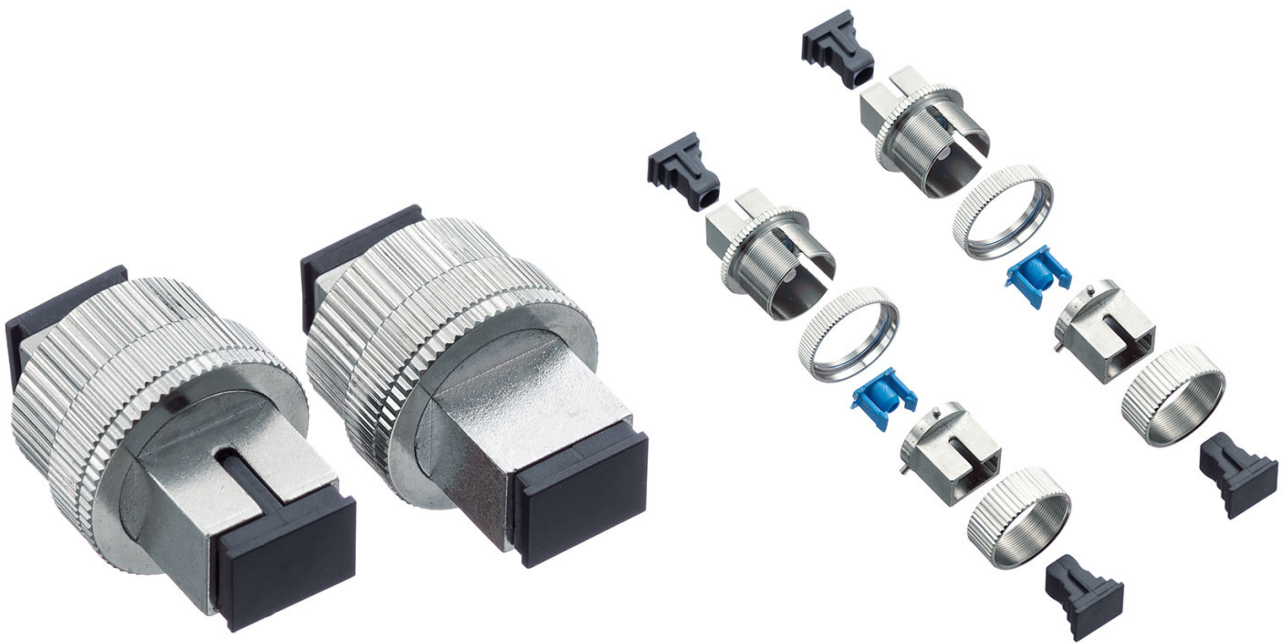


DATASHEET

SC Female to SC Female variable attenuator



OMC INDUSTRY CO.LIMITED

2018|En version1.0



SC Female to SC Female variable attenuator

Description

Variable Adapter Type Optical Attenuator (Variable Bulkhead type, Variable Female-Female Optical Attenuator) utilizes the air gap between the two connectors to realize optical attenuation. It has a structure similar to an Fiber adapter. However, the air gap can be continuously adjusted and fixed manually. Variable adapter type attenuator induces a variable optical attenuation from 0.5dB to 30dB. This component can be used in applications where optical attenuation needs to be frequently adjusted.

The Variable adapter type attenuator has included tool provides ability to increase attenuation level to desired dB. Their attenuation range is 0dB to 30dB depending on light source.

OMC provides a wide range of single mode and multimode variable adapter type optical attenuator. They have low return loss and works at both 1310nm and 1550nm wavelength range. FC Fiber connector types with PC or APC polish are available.

Attenuator Specifications

Fiber Connector	SC-SC	Sleeve Type	Zirconia Ceramic
Connector Gender	Variable	Transfer Mode	Single mode
Attenuation	1~30dB	Operating Wavelength(nm)	1260~1620(SM)
Attenuation Accuracy	±0.8dB	Minimize Insertion Loss	<2.5dB
Polarization Dependent Loss	≤0.2dB	Max Optical Input Power	200mW
Humidity	95%RH	Operating Temp Range	-40~80°C

Products Materials

Parts name	Material
Body	Zine-Ally
Sleeve	High precision Ceramic sleeve
Sleeve Subassembly	Ceramic&SUS304
Dust Cover	PVC

Features

1. High quality ceramic core

The application of Imported A - grade ceramic insert enable the product with high stability , good reliability , high transmission speed and low insertion loss.

2. Wide attenuation range 1dB to 30dB

The FC attenuator from OMC are designed to give the accurate attenuation required by the connected device and are available in a wide range of attenuation levels.

3. Easy Installation

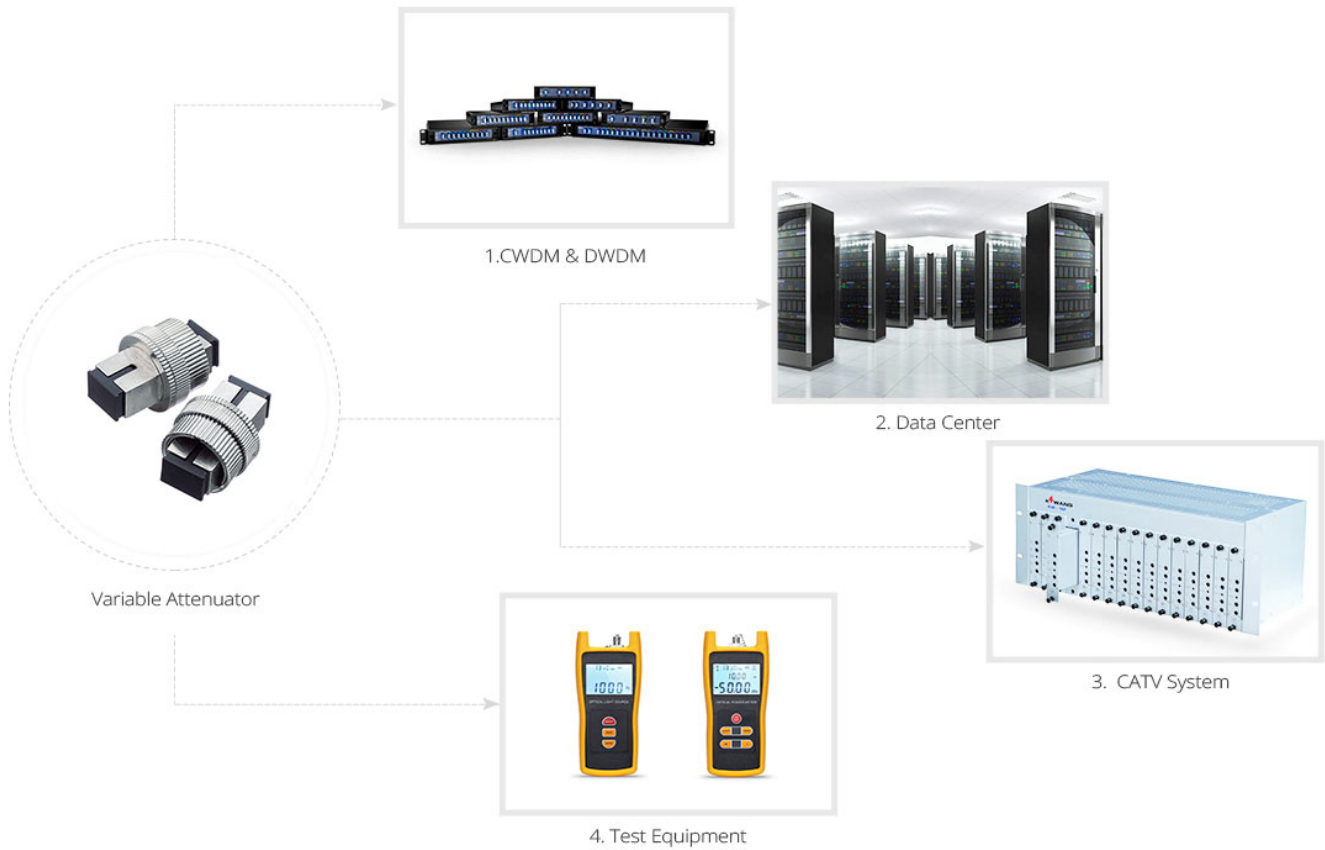
The FC attenuator from OMC is designed for optical hardware to reduce the dB power, the plug type allows them to be used directly at the end of a patch cable, they also feature a dust cap on the tips for protection.



SC Female to SC Female variable attenuator

Attenuator Application

With the excellent characteristics, SC Variable Fiber Optic Attenuators can be used in fiber optical telecommunication system and optical transmission system. These attenuators can be applied in FTTH, CATV, WAN, fiber optical sensor and metropolitan area network. They are often used as the testing equipment.



Packaging

This easily taken and well-protected fiber optical cable package has been labelled and marked by OMC as default. Standard carton size : 34*22*15 cm; 44*34*24 cm ; 54*39*34 cm . Which carton to be used depends on goods Qty . Packing can be customized.



1, Single PE Bag



2, Paper Carton



3, fumig-free Pallet

Order Index

Products	-	Attenuation type	-	Housing Type	-	Female port 1	-	Female port 2
K - Attenuator		2- Variable		2 - Female to female		A-LC UPC		A-LC UPC
						B—SC UPC		B—SC UPC
						C-FC UPC		C-FC UPC
						D-ST UPC		D-ST UPC
						E— LC APC		E— LC APC
						F-SC APC		F-SC APC
						G-FC APC		G-FC APC
						H— MU UPC		H— MU UPC
						I— MU APC		I— MU APC
						J— E2000 UPC		J— E2000 UPC
						K-E2000 APC		K-E2000 APC