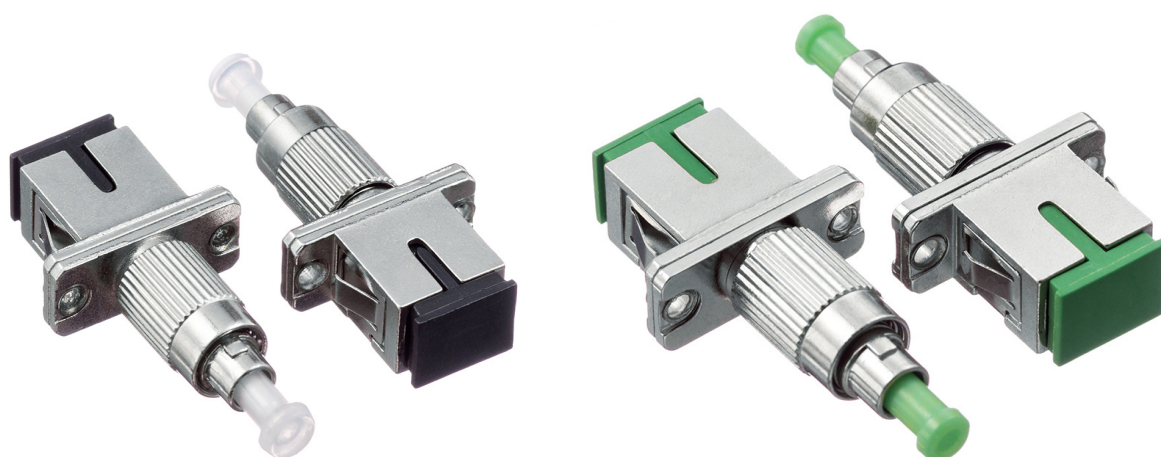


# DATASHEET

## SC Female to FC Male conversion adapter



OMC INDUSTRY CO.LIMITED

2018|En version1.0



## SC Female to FC Male conversion adapter

### Description

**SC Female to FC male conversion adapter** adopt embedded optical fiber connector and optical fiber ferrule matching Sleeve joint technology. The products can hybrid a type of fiber optic connectors (male) into another type of optical fiber connector (male). It keeps the advantages of small size, light signal stable, easy to use characteristics, widely used in optical fiber equipment instrument testing and rescue project construction field.

**This SC(Female) to FC(Male) fiber optic conversion adapter**, Converting SC connector to FC Connector. Variable SC interface conversion FC interface. Provided a simple and reliable solution for connecting two different optic fiber transmission joints.

### Specification:

Test item	(SM-9/125) UPC	(SM-9/125) APC	MM-50/125 PC	MM-62.5/125 PC
Insertion Loss	≤0.3dB	≤0.3dB	≤0.3dB	≤0.3dB
Return Loss	≥50 dB	≥60 dB	≥35 dB	≥35 dB
Durability (500 Mating)	0.2dB Max.			
Operation Temp	-40 ~ +85			
Storage Temp	-40 ~ +85			

Remark: SC Female to FC Male Hybrid Adapter are ultra-reliable components featuring low insertion loss and back reflection loss. You can select single mode 9/125um or multimode 62.5/125um or multimode 50/125um.

### Products details



Simplex-SM



Simplex-MM

### Available

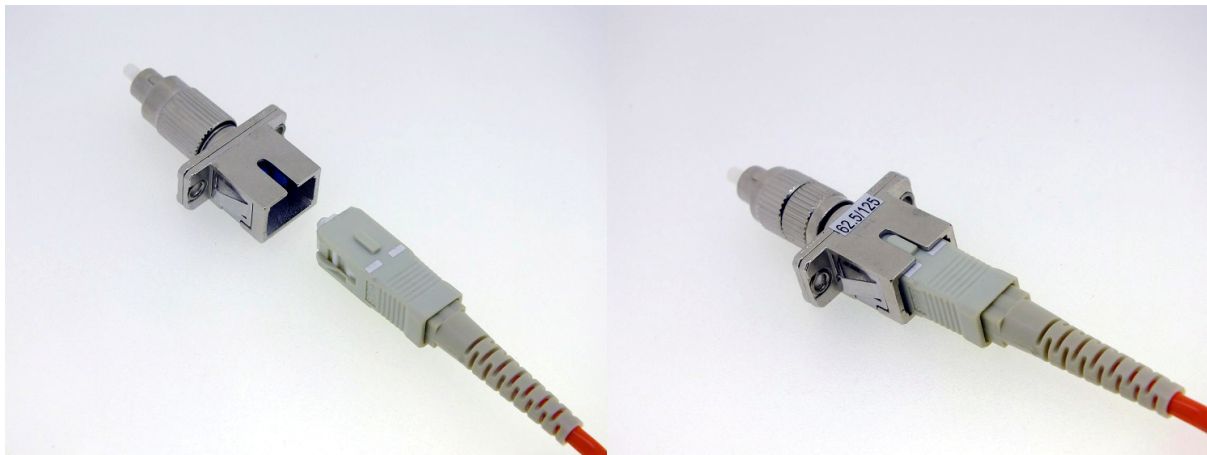
SM UPC, SM APC,  
MM OM1 62.5/125,  
MM OM2 50/125  
MM OM3 50/125  
MM OM4 50/125

### Features

Low insertion loss  
High corrosion resistance  
High interface performance  
High return loss  
Easy to handle

### Applications

Telecom network  
Optical data transmission connection  
Fiber optic equipment testing and engineering rescue construction





## SC Female to FC Male conversion adapter

### Order index

Products	Fibers	Fiber Mode	Female Connector	male Connector
I-Female to male	1-Simplex	1- SM 9/125	A- LC UPC	A- LC UPC
Fiber Adapter	2-Duplex	2- OM1 62.5/125	B- LC APC	B- LC APC
		3- OM2 50/125	C- SC UPC	C- SC UPC
		4- OM3 50/125	D- SC APC	D- SC APC
		5- OM4 50/125	E- FC UPC	E- FC UPC
			F- FC APC	F- FC APC
			G-ST UPC	G-ST UPC
			H- E2000 UPC	H- E2000 UPC
			I - E2000 APC	I - E2000 APC
			J- SMA UPC	J- SMA UPC