

DATASHEET

MPO&MTP Fiber adapter



RoHS



OMC INDUSTRY CO.LIMITED

Description

MPO/MTP adapter provides alignment for a male and female MPO/MTP connector. The housing is available with MPO/MTP or SC footprint, aligned or opposed alignment keys, different colors and with options for flange or flange-less body.

MTP/MPO adapter has two types as key-up to key-down and key-up to key-up. It provides the connection between cable to cable or cable to equipment in the MTP/MPO system. It works for any MPO/MTP Connector from 4 fibers to 72 fiber, widely used in trunk cabling and cassettes. This adapter meets appropriate standards and is perfect for your parallel optics and MPO/MTP adapter needs.

MPO/MTP fiber optical adapter comply with industry standard TIA - 568C. 3-2008 (standard of fiber optical system) and YD/T1272.5-2009 (fiber optical connector part v: MPO style).

OMC Adapters design, material and manufacturing process assure long life and high repeatability of optical performances even for different brand connectors mating.

Material

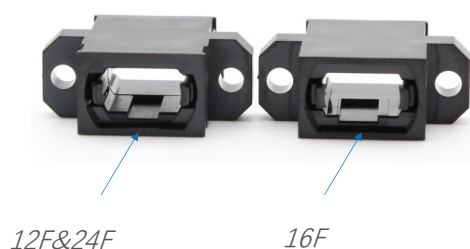
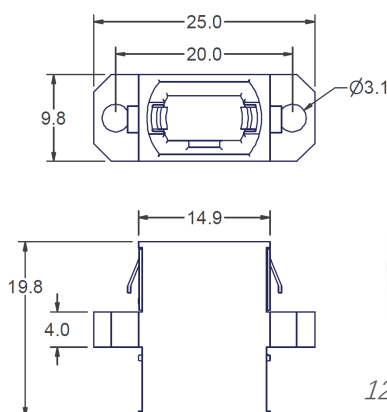
Parts name	Material	Color
Housing body	Polyetherimide	Black, Green, Yellow, Beige, Aqua, Magenta or Customized
Metal Plate	Stainless steel	Slivery
Dust Cover	PC/Rubber	Black

Specification:

Connector Type	MTP&MPO	Keyway	Opposed (Up-Down) Aligned (Up-Up)
Adapter Port	Single	Footprint	MPO/MTP standard SC Type
Insertion Loss	$\leq 0.2\text{dB}$	Durability	$\leq 0.1\text{dB}$
Flammability Rate	UL94-V0	Working Temperature	-25~70°C

Products details

MPO MTP Standard Adapter-Full flange

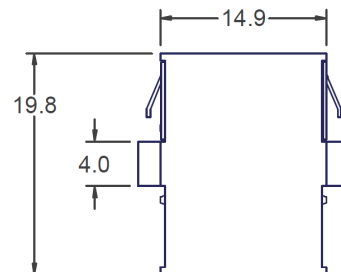
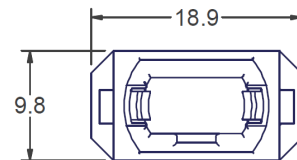


*MPO MTP Standard Adapter-Full flange
-One piece design*

MPO MTP Standard Adapter-Reduced flange



MPO MTP Standard Adapter-Reduced flange



SC Footprint MPO/MTP Adapter-Full flange



*SC Footprint MPO/MTP Adapter-Full flange
-One piece design*

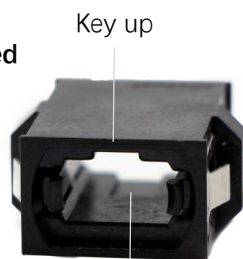
SC Footprint MPO/MTP Adapter-Reduced flange



*SC Footprint MPO/MTP Adapter-Reduced flange
-One piece design*

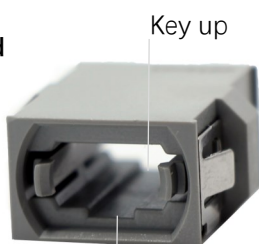
The key Location in Adapter

Opposed



Key Down

Aligned



Key up

Standard MPO&MTP Vs SC footprint



Available

SM UPC, SM APC, MM OM1 62.5/125, MM OM2/3/4 50/125 ;
Black, Green, Yellow, Beige, Aqua, Magenta or Customized

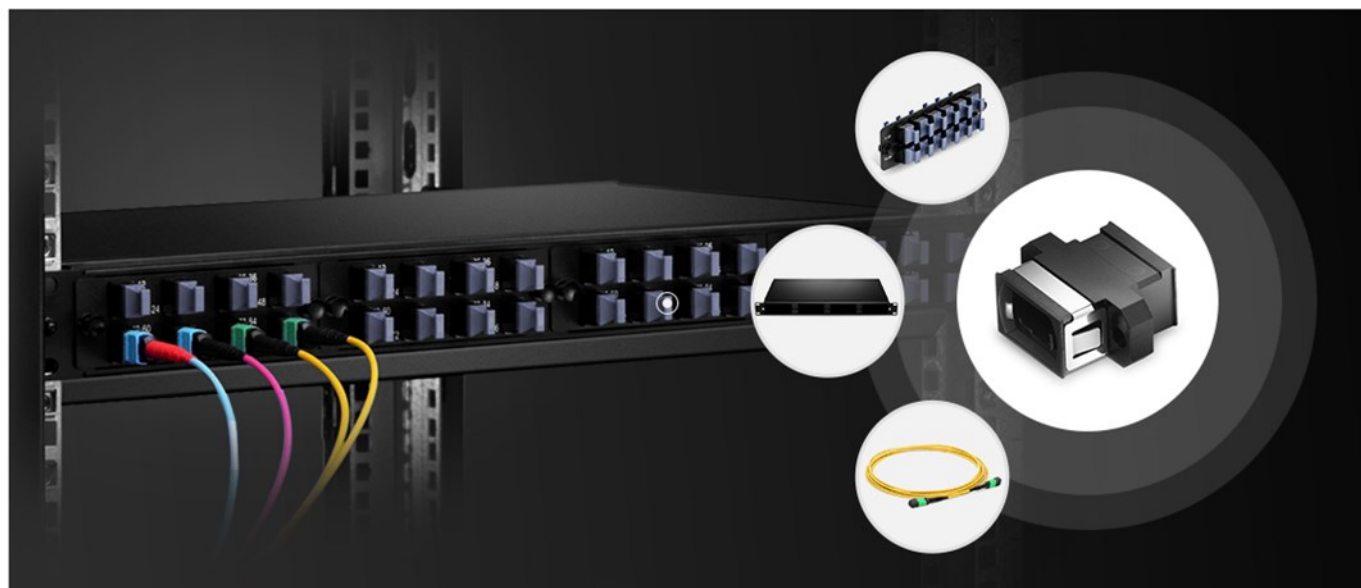
Applications

Patch panels, ODF and other optical connections.
Optical networks demarcation and monitoring point.

Adapters Bridge the Gap Between Fiber Optic Connectors, Our MTP/MPO fiber optic adapters are widely applied in 10G/40G/100G networks, data center, optical fiber communication system, cable television network, fiber optic access network and video transmission.

Features

One-piece design
Anti-Fungus Plastic
Internal Shutter Capable
Stainless Steel Clip
Full flange type
Meet IEC and ROHS standards
High precision of mechanical dimensions Accuracy



Order index

Products	-	Adapter structure	-	Key type	-	Color
H3-China made		1- Standard Full flange One piece 12&24F		1 - Opposed		1 - Black
MPO&MTP adapter		2- Standard reduced flange one piece 12&24F		2- Aligned		2 - Beige
H4-MPO From Japan		3- SC Footprint Full flange One piece 12&24F				3 - Green
H4-MTP From USconec		4- SC Footprint reduced flange one piece 12&24F				4 - Aqua
		5- Standard Full flange One piece 16F				5 - meganta
						6 - Yellow