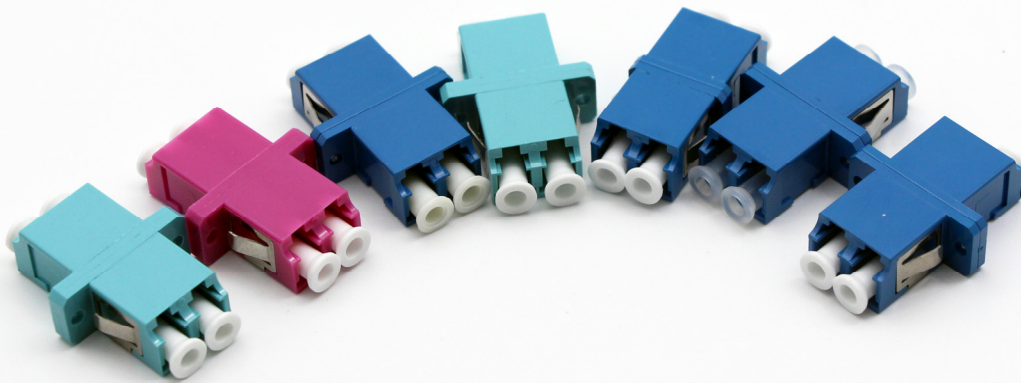


DATASHEET

LC Fiber Adapter-Standard



RoHS



OMC INDUSTRY CO.LIMITED

2018|En version1.0

Description

LC Adapters are developed to couple and mate 2/4/8 LC connector plugs. Each LC adapter has receptacles on both ends to connect LC patch cords together. It has stainless steel mounting clips allowing it to be easily snapped into rectangular cut outs for duplex SC mount.

Our range of high-quality LC adapters have high precision alignment sleeves for reliability and improved reconnect ability. For single mode and multimode applications, a ceramic sleeve is supplied. The housing is available in different colors with options for flange or flangeless body, metal clips or inbuilt clips.

OMC Adapters design, material and manufacturing process assure long life and high repeatability of optical performances even for different brand connectors mating.

Products Materials

Parts name	Material	Color
Housing body	PC/PEI/Metal	Blue, Green, Beige, Aqua, Magenta or Customized
Sleeve	High precision Ceramic sleeve	White
Inside hook	PBT/PEI	Blue, Green, Beige, Aqua, Magenta or Customized
Metal Plate	Stainless steel	-
Dust Cover	PE/ABS	White or Customized

Optical Specifications

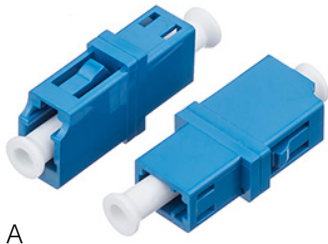
Test item	(SM-9/125) UPC	(SM-9/125) APC	MM PC
Insertion Loss	≤0.2dB	≤0.2dB	≤0.2dB
Return Loss	≥50 dB	≥60 dB	≥35 dB
Durability (500 Mating)	0.1dB Max.		
Withdrawal force (g/f)	2.0N ~ 5.9N (200gf ~ 600gf)		
Storage Temp (°C)	-40 ~ +85		

Available for Simplex of SM UPC, SM APC, MM OM1 62.5/125, MM OM2,OM3,OM4 50/125

Environment and Mechanical

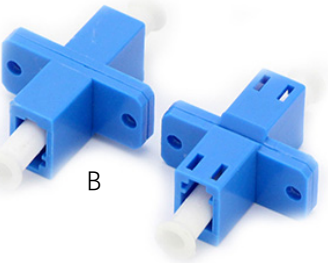
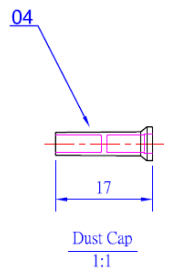
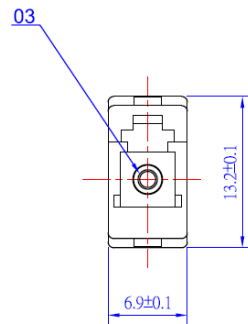
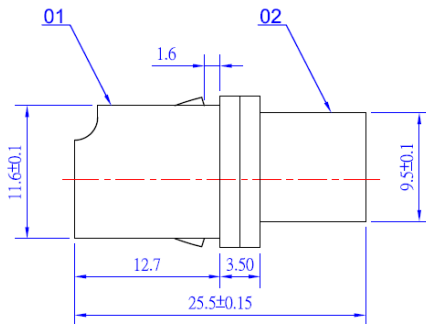
Properties	Test condition	Conformance	Test result
Vibration	10-55Hz, 1.5mm, 60min	IEC61300-2-1	≤0.2dB
Mating Durability	1000 Mating, clean every 25 mating.	IEC61300-2-2	≤0.2dB
Impact	1.5m, 8 drops	IEC61300-2-6	≤0.2dB
Strength of Coupling Mechanism	40N, 10Min, L=22-28cm	IEC61300-2-12	≤0.2dB
Temperature Cycling	40°C to +75°C, 40 cycles	IEC61300-2-22	≤0.2dB
Temperature humidity cycling	40°C, 95%, 96Hr	IEC61300-2-21	≤0.2dB
Operating Temperature	-40°C to +85°C		≤0.2dB
Storage Temperature	-40°C to +85°C		≤0.2dB

Products Details



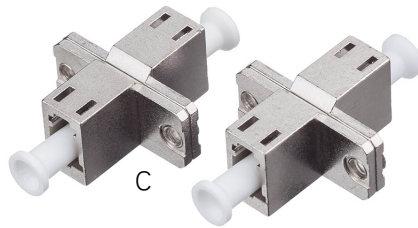
A

LC Simplex Standard adapter
-Two pieces Welded body



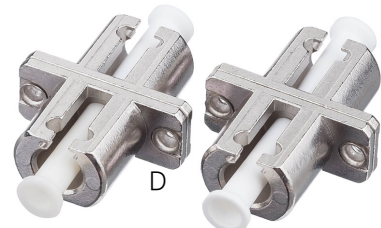
B

LC Simplex SC footprint adapter
-Two pieces Welded body



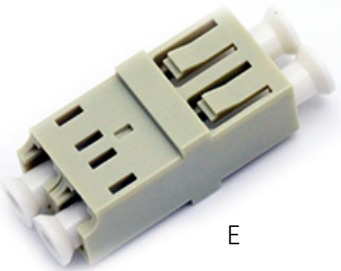
C

LC Simplex SC footprint adapter
-Two pieces Welded Slotted Metal body



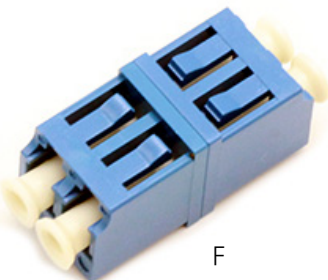
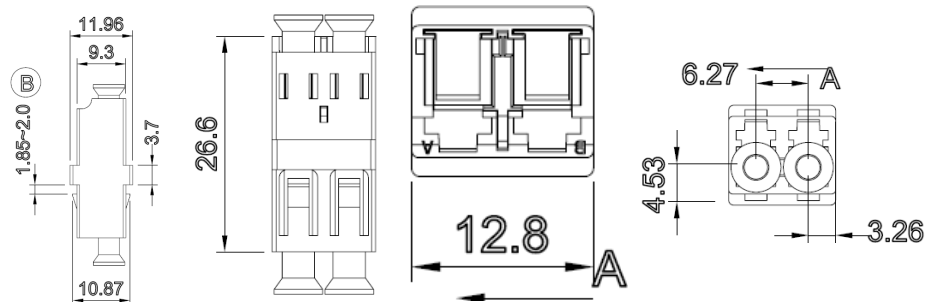
D

LC Simplex SC footprint adapter
-Two pieces Welded Metal body



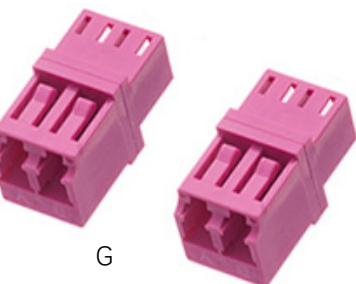
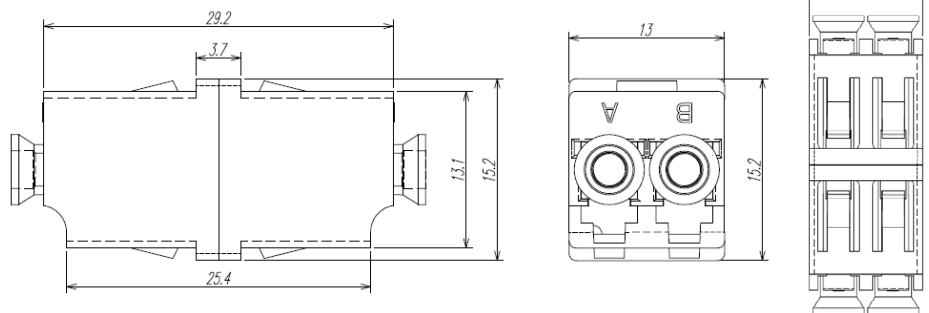
E

LC duplex vertical adapter-HD



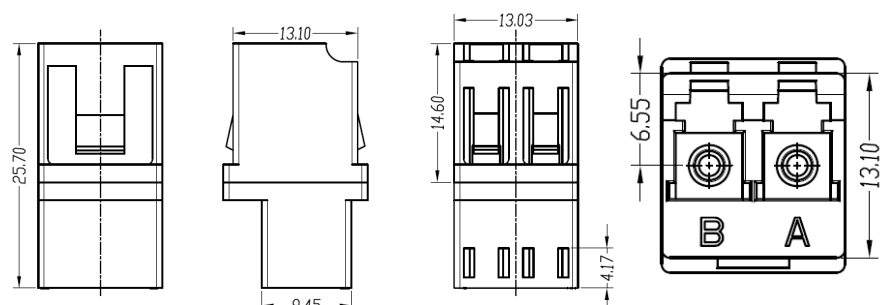
F

LC Duplex Symmetry-Type Adapter

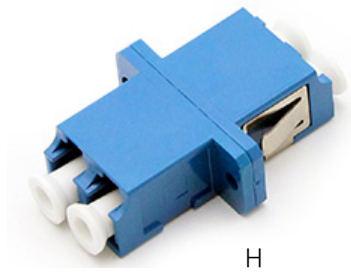


G

LC Duplex No Symmetry-Type Adapter

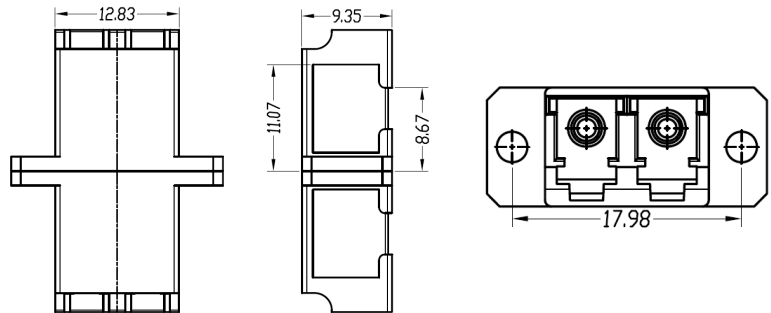


Products Details



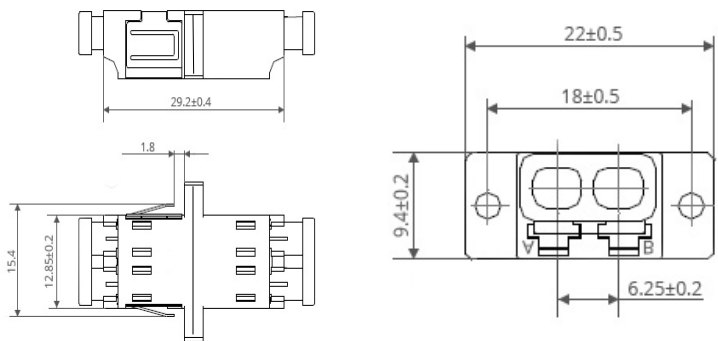
H

LC Duplex SC Footprint adapter with Full flange –two pieces Welded No slotted body



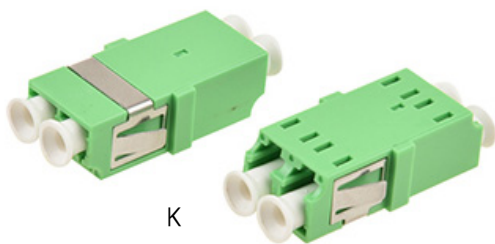
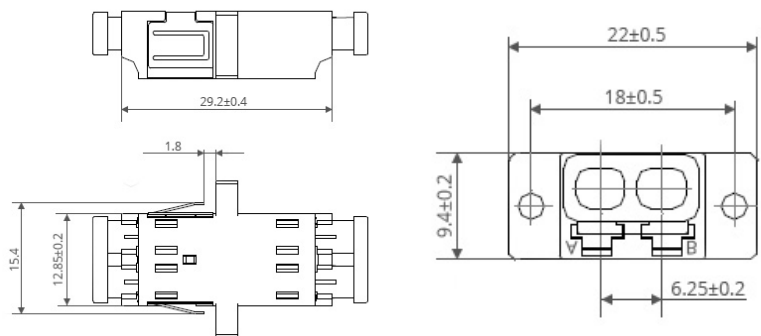
I

LC Duplex SC Footprint adapter with Full flange –two pieces Welded slotted body



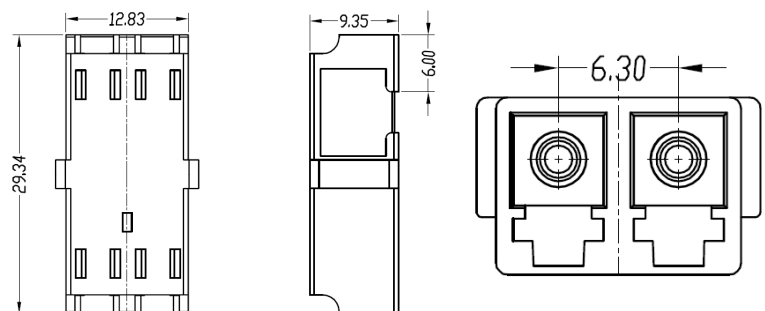
J

LC Duplex SC Footprint adapter with Full flange –one piece Welded slotted body



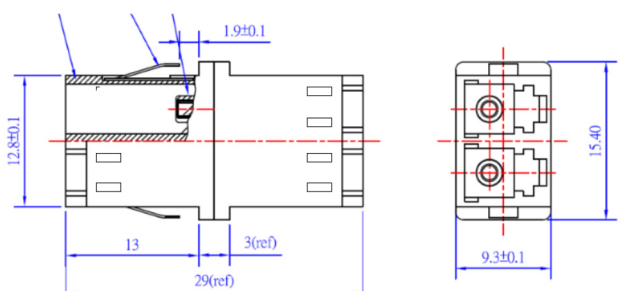
K

LC Duplex SC Footprint adapter with Reduced flange –one piece Welded slotted body



L

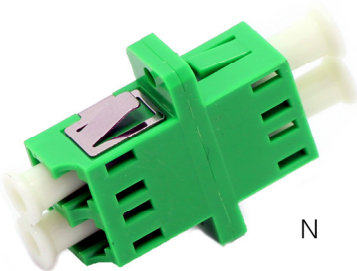
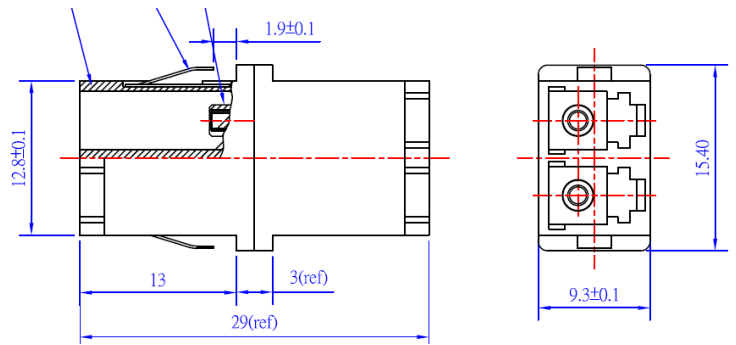
LC Duplex SC Footprint adapter with Reduced flange –Two pieces Welded slotted



Products Details

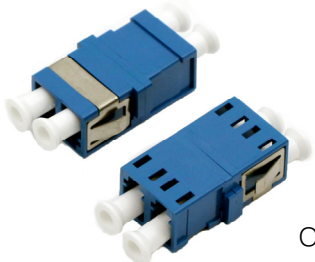


LC Duplex SC Footprint adapter with reduced flange – two pieces Welded No slotted body

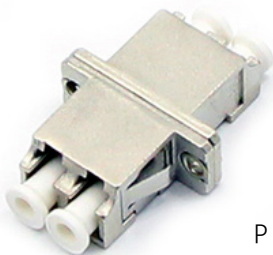
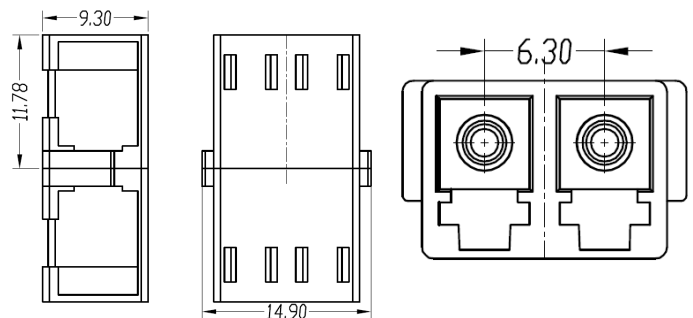


LC Duplex SC Footprint adapter with reduced flange – two pieces Welded slotted middle size body

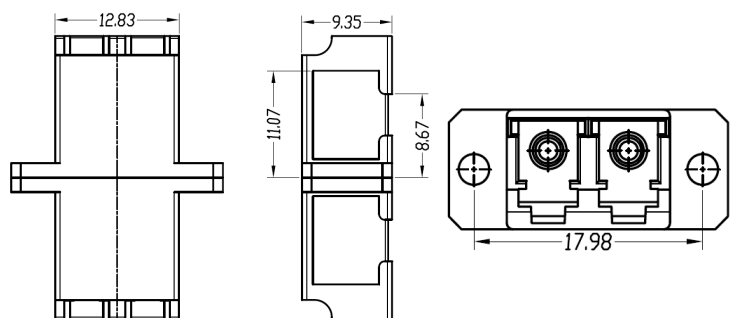
Drawing available soon



LC Duplex SC Footprint adapter with reduced flange – two pieces Welded slotted shortest body



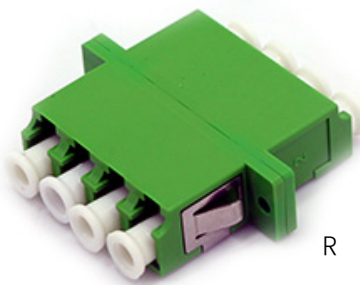
LC Duplex SC Footprint adapter with Full flange – two pieces Welded No slotted Metal body



LC Duplex SC DX Footprint adapter with Full flange – two pieces Welded No slotted Metal body

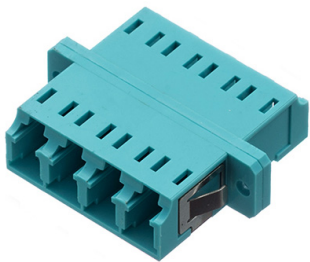
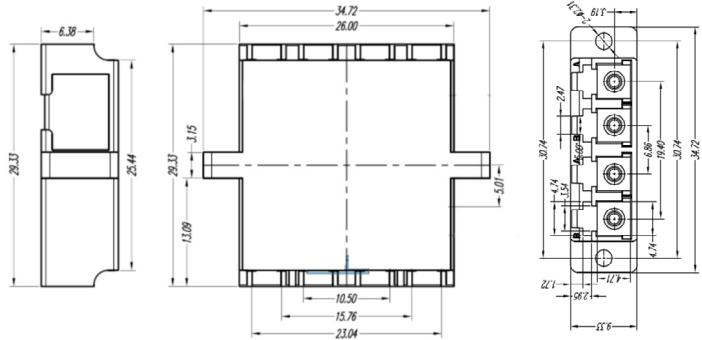
Drawing available soon

Products Details



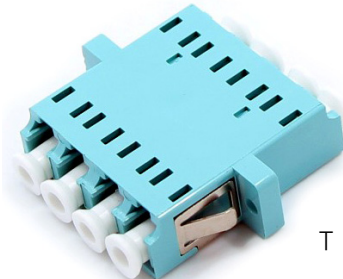
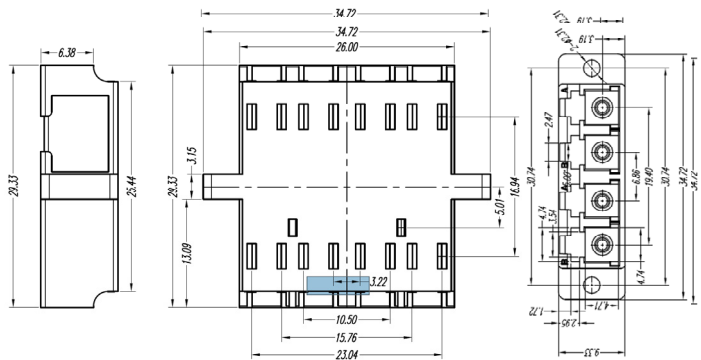
R

LC Quad SC Footprint adapter with full flange –two pieces Welded No slotted body



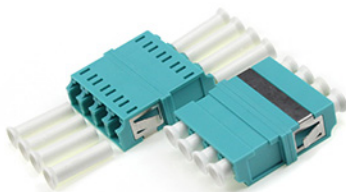
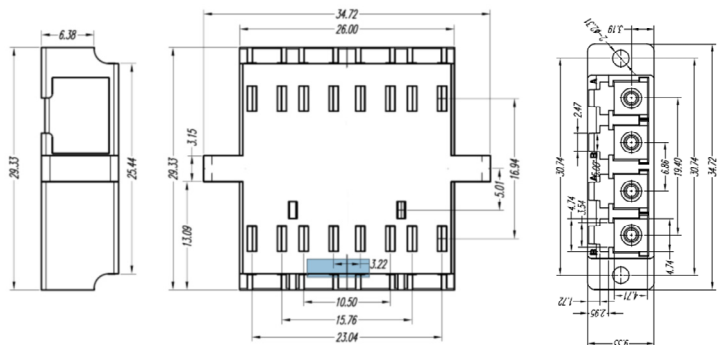
S

LC Quad SC Footprint adapter with full flange –two pieces Welded slotted body



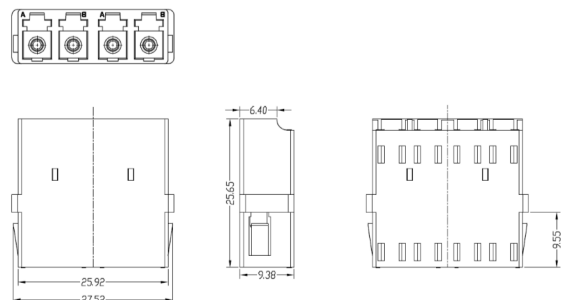
T

LC Quad SC Footprint adapter with full flange – one piece Welded slotted body



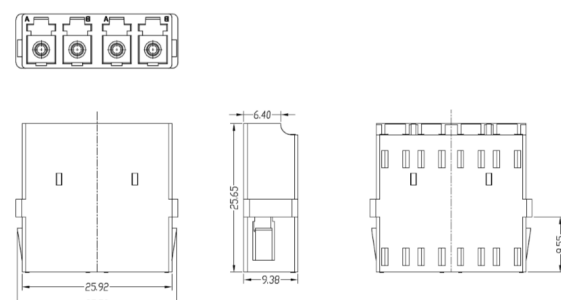
U

LC Quad SC Footprint adapter with Reduced flange –Two pieces Welded slotted body



V

LC Quad SC Footprint adapter with Reduced flange – one piece Welded slotted body

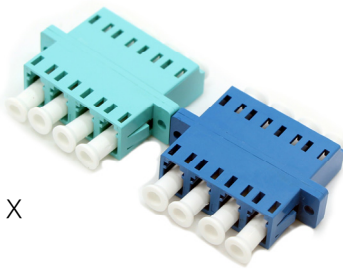
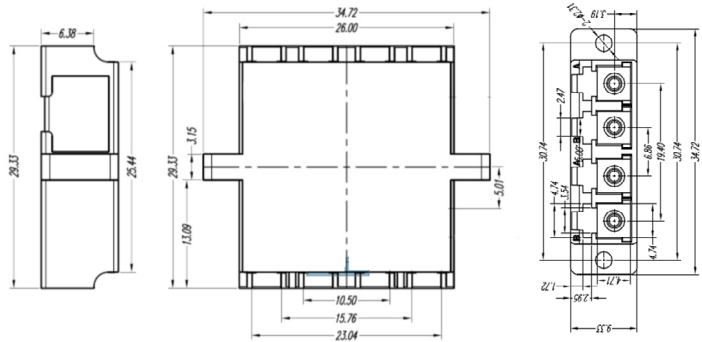


Products Details



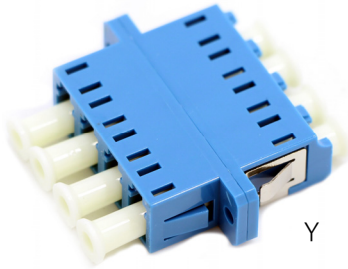
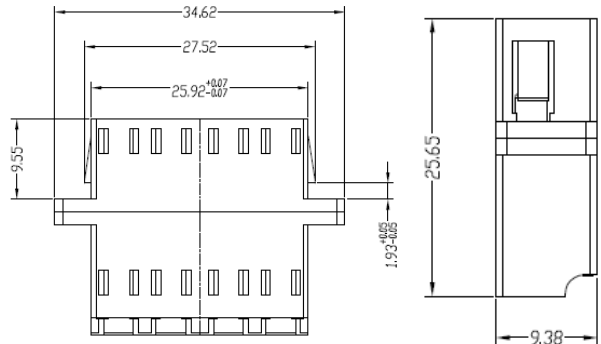
W

LC Quad SC Footprint adapter with full flange –two pieces Welded No slotted Metal body



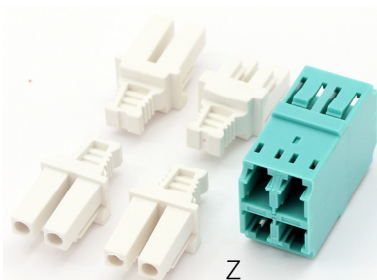
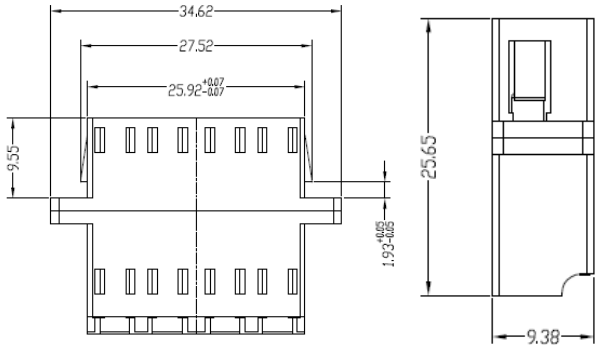
X

LC Quad SC Footprint adapter with full flange –two pieces Welded slotted middle size body No metal chip



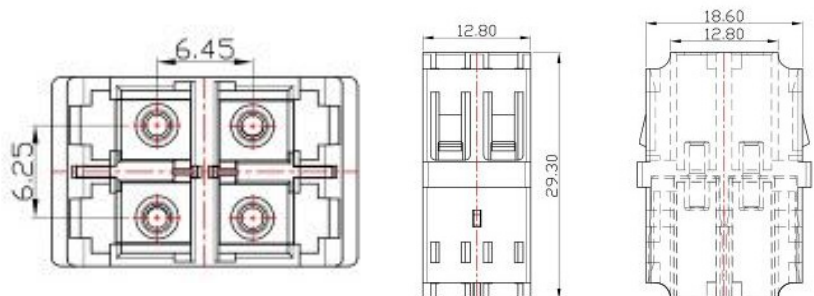
Y

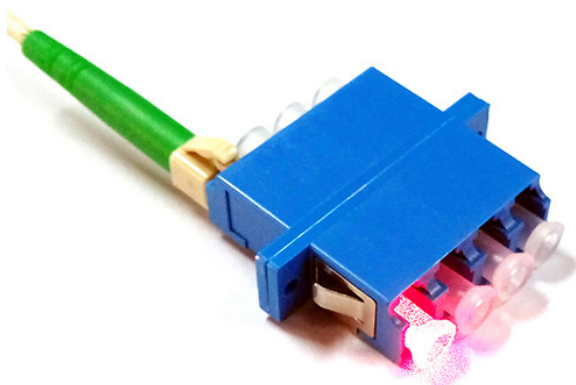
LC Quad SC Footprint adapter with full flange –two pieces Welded slotted middle size body with metal chip



Z

LC Quad square adapter –one piece welded slotted body





Transparent Dust cap for LC adapter

Features:

TIA/EIA-604 FOCIS-10 compatible; exceeds TIA/EIA-568-B.3 requirements
 Complies with IEC 61754-4, Flammability UL94 V-0 standard
 Available in Flanged and Flangeless options
 Precision connection with sleeve
 SM and MM connector can be used interchangeably
 Low insertion loss, High Return loss
 Good interchangeability and reliability
 Meet IEC and ROHS standards
 High precision of mechanical dimensions Accuracy

Application:

Patch panels, ODF and other optical connections.
 Optical networks demarcation and monitoring point

Order index

Products	Ports	Fiber Port	Structure	Body Color
H6- Fiber adapter	1-Simplex	1- LC	A-LC Simplex Standard adapter -Two pieces Welded body	1-Blue
	2-Duplex		B-LC Simplex SC footprint adapter -Two pieces Welded body	2-Beige
	3-Quad		C-LC Simplex SC footprint adapter -Two pieces Welded Slotted Metal body	3-Green
			D-LC Simplex SC footprint adapter -Two pieces Welded Metal body	4-Aqua
			E-LC duplex vertical adapter	5- Magenta
			F-LC Duplex Symmetry-Type Adapter	6-Metal
			G-LC Duplex No Symmetry-Type Adapter	7- Brown
			H-LC Duplex SC Footprint adapter with Full flange – two pieces Welded No slotted body	8- Black
			I-LC Duplex SC Footprint adapter with Full flange – two pieces Welded slotted body	9- Yellow
			J-LC Duplex SC Footprint adapter with Full flange – one piece Welded slotted body	
			K-LC Duplex SC Footprint adapter with Reduced flange –one piece Welded slotted body	
			L-LC Duplex SC Footprint adapter with Reduced flange –Two pieces Welded slotted body	



LC Fiber Adapter-Standard

Order index

Products	Ports	Fiber Port	Structure	Body Color
H6- Fiber adapter	1-Simplex	1- LC	M-LC Duplex SC Footprint adapter with reduced flange –two pieces Welded No slotted body	1-Blue
	2-Duplex		N-LC Duplex SC Footprint adapter with reduced flange –two pieces Welded slotted middle size body	2-Beige
	3-Quad		O-LC Duplex SC Footprint adapter with reduced flange –two pieces Welded slotted short body	3-Green
			P-LC Duplex SC Footprint adapter with Full flange – two pieces Welded No slotted Metal body	4-Aqua
			Q-LC Duplex SC DX Footprint adapter with Full flange –two pieces Welded No slotted Metal body	5- Magenta
			R-LC Quad SC Footprint adapter with full flange –two pieces Welded No slotted body	6-Metal
			S-LC Quad SC Footprint adapter with full flange –two pieces Welded slotted body	7- Brown
			T-LC Quad SC Footprint adapter with full flange –one piece Welded slotted body	8- Black
			U-LC Quad SC Footprint adapter with Reduced flange –Two pieces Welded slotted body	9- Yellow
			V-LC Quad SC Footprint adapter with Reduced flange –one piece Welded slotted body	
			W-LC Quad SC Footprint adapter with full flange –two pieces Welded No slotted Metal body	
			X-LC Quad SC Footprint adapter with full flange –two pieces Welded slotted middle size body No metal chip	
			Y-LC Quad SC Footprint adapter with full flange –two pieces Welded slotted middle size body with metal chip	
			Z-LC Quad square adapter -one piece welded slotted body	