

DATASHEET

LC Fiber Optic Connector



OMC INDUSTRY CO.LIMITED

Description

Optical Connector is a reusable passive component which could be applied in fiber and Cable connection. They are widely used in ODF, ODN, PON etc.

Considered by some to be the modern replacement of the SC connector; its introduction was less successful, in part due to initially high license fees from inventor Lucent Corporation. Also a push-pull connector, the LC utilizes a latch as opposed to the SC locking tab and with a smaller ferrule it is known as a small form factor connector. Having half the footprint of the SC connector gives it huge popularity in datacoms and other high-density patch applications, as its combination of small size and latch feature make it ideal for densely populated racks/panels. With the introduction of LC compatible transceivers and active networking components, its steady growth in the FTTH arena is likely to continue.

OMC manufactures many sorts of fiber connectors. Such as SC, LC, ST, FC, MU, MTRJ, E2000, MPO, MTP, SMA, DIN, D4 etc.

Industrial Standard:

LC: TIA/EIA, FOCIS10, GR-326 EIA/TIA-604-10, IEC61754-20 and JIS C5973.

Optical Performance:

Meets Telcordia GR-326-Core issue

IL(Typical): SM < 0.3dB; MM < 0.3dB;

RL(Typical): SM > 50dB; MM > 35dB;

Environmental Performance:

Operating Environment: -40°C ~ + 80°C

Meets UL94-V0 Flammability Requirements

ROHS compliant

Mechanical Performance:

Connection Durability: 500 Matings cycles

Connector Repeatability: MM < 0.2dB; SM < 0.1dB

Application

Patch cord & pigtail produce & Manufacture

Products Details

Fiber Connector	LC	Ferrule Material	Zirconia Ceramic
Housing	SM: Blue MM: Beige/aqua/magenta APC: Green	Boot Size	0.9mm, 2.0mm, 3.0mm
Operating Temp Range	-40~80°C	Boot color	SM: Blue/white/red/yellow MM: Beige/aqua/magenta/black APC: Green
Suit Cable	0.6-3.0mm OD cable	Available for	Not assembled Multi-Piece Pre-assembled one piece

Boot Type

We can offer **Straight boot** and **Angled boot**.

For **Straight boot**, We can offer boot length is from 12mm to 38mm

For **Angled boot**, we can offer 45 degree boot, 90 degree boot, and 135 degree boot.

We can offer **flex angle LC 2.0/3.0mm boot**.
We can offer different color boot

Connector Housing Type

We can offer many different color Housing LC, Such as Blue, Beige, Aqua, Magenta, Black, Pink

Dust cap Type

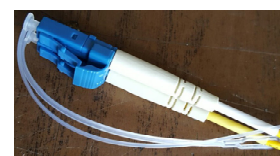
We can offer many different color and shape LC, Such as White, Transparent, green color.....



Standard cap

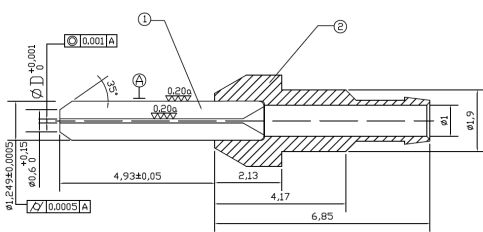


Full cover cap



With tail type cap

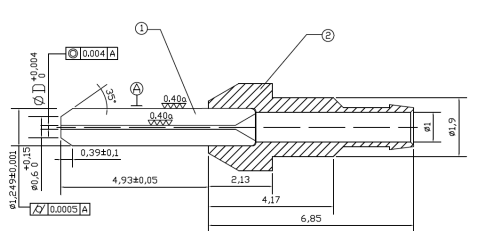
Ferrule for LC Connector



SM UPC Ferrule for LC SM UPC Connector

Concentricity $\leq 1.0\mu\text{m}$ for standard quality demand

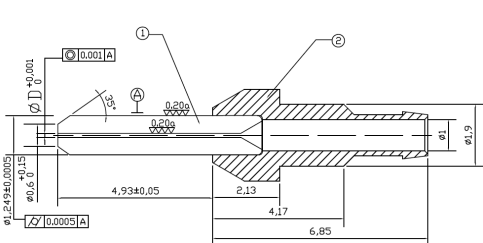
Concentricity $\leq 0.3\mu\text{m}$ for IEC grade B demand



MM Ferrule for LC MM PC Connector

Concentricity<4.0um for standard quality demand

Concentricity<1.4um for IEC grade B demand

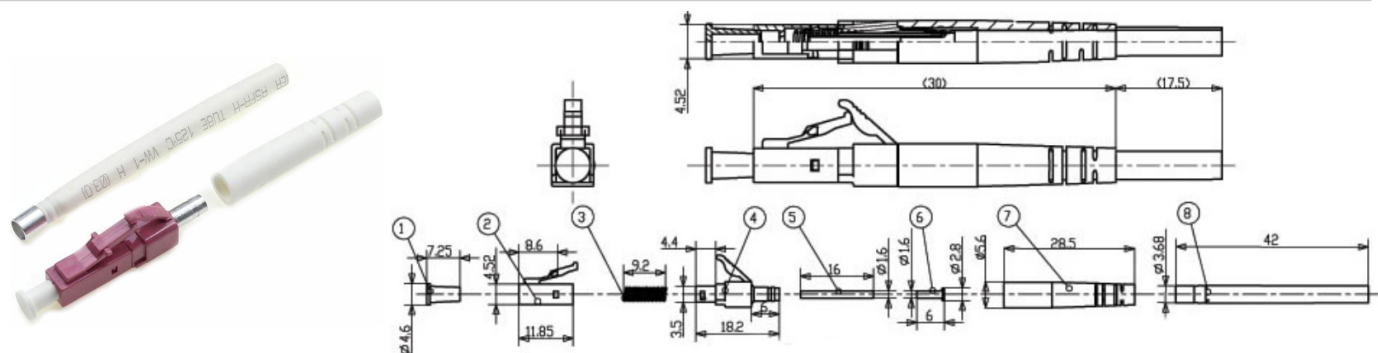


SM APC Ferrule for LC SM APC Connector

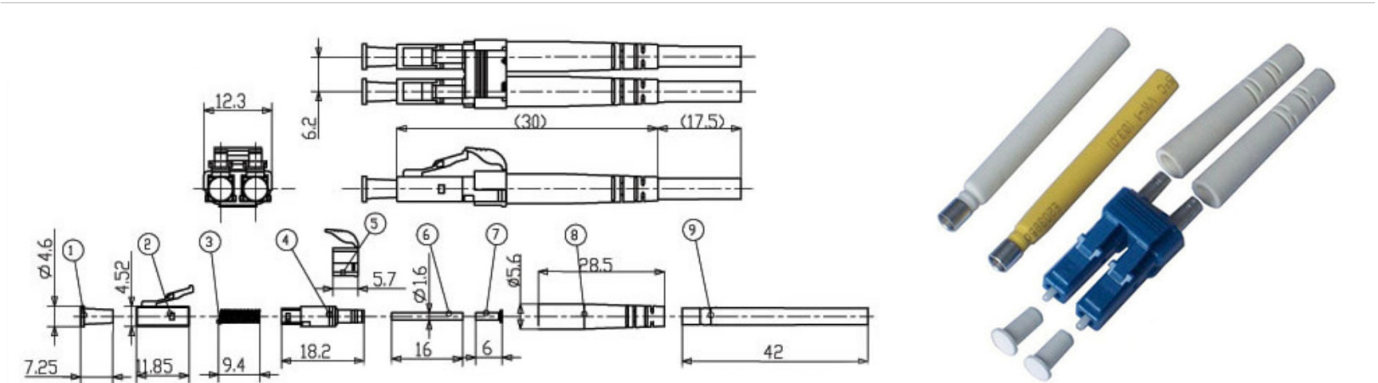
Concentricity $<1.0\mu\text{m}$ for standard quality demand

Concentricity<0.3um for IEC grade B demand

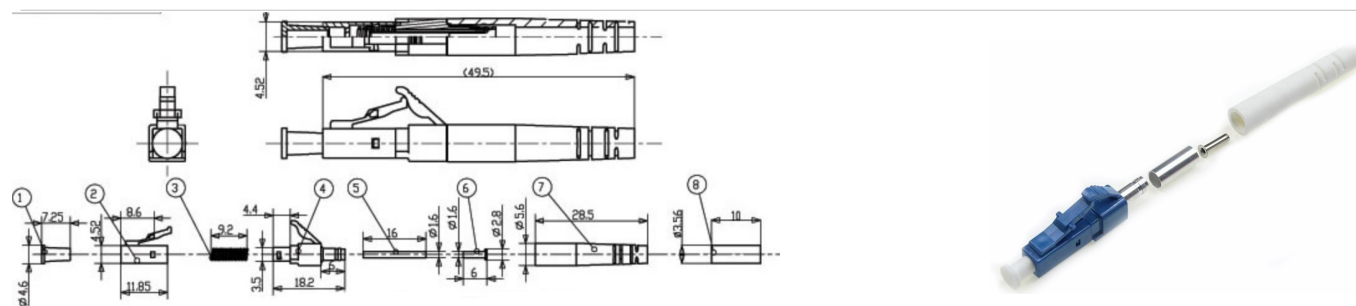
LC 2.0mm Boot Simplex Connector Drawing



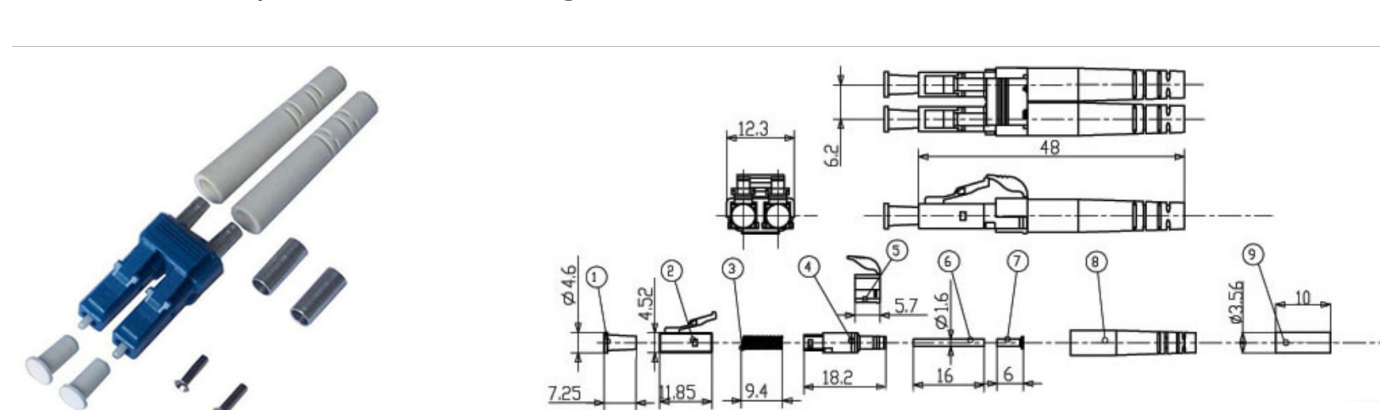
LC 2.0mm Boot Duplex Connector Drawing



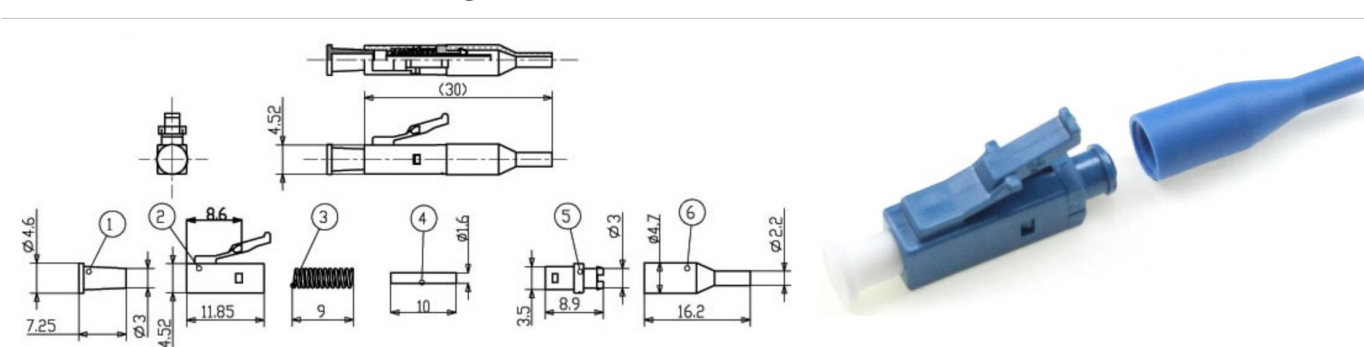
LC 3.0mm Boot Simplex Connector Drawing



LC 3.0mm Boot Duplex Connector Drawing



LC 0.9mm Boot Connector Drawing



Hollow Boot 3.0mm

Solid Boot 3.0mm

Order index

Products	Connector	Ports	Housing kits color	Boot Shape	Boot Color	Dust cap	Assembly
G- Fiber Connector	A-LC PC	1 - Simplex SM	A - Blue	1 - 0.9mm	A - Blue	1-Standard White	0- not assembled
	E-LC APC	2- Duplex SM	B- Orange	2- 2.0mm standard boot	B- Orange	2-Standard green	1-Assembled
		3 - Simplex MM	C- Green	3- 3.0mm standard boot	C- Green	3-Standard transparent	
		4- Duplex MM	D- Brown	4- 2.0mm 19mm short boot	D- Brown	4-Full cover white cap	
			E- Grey	5- 2.0mm 15mm short boot	E- Grey	5- Transparent with tail cap	
			F-White	6-2.0mm 45 degree boot	F-White		
			G-Red	7-3.0mm 90 degree boot	G-Red		
			H-Black	8-3.0mm 135 degree boot	H-Black		
			I-Yellow	9-Flex angle boot	I-Yellow		
			J-Purple		J-Purple		
			K-Pink		K-Pink		
			L-Aqua		L-Aqua		
			M-Magenta		M- Magenta		
					N-2 colors for Dx		