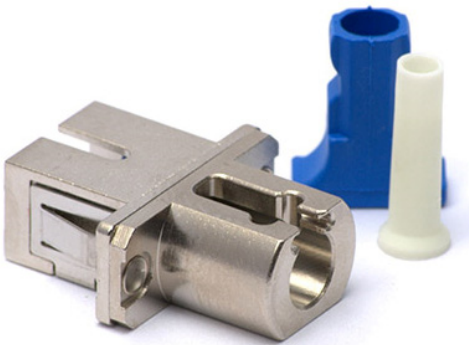


DATASHEET

LC Female to SC Female Hybrid Fiber adapter

Simplex-Sc footprint 1



Simplex-Sc footprint Plastic



Simplex-Sc footprint 2



Duplex -Sc footprint



RoHS



OMC INDUSTRY CO.LIMITED



LC Female to SC Female Hybrid fiber adapter

Description

Female to Female Hybrid Adapter are developed to couple and mate two different (hybrid) connector plugs. The housing of the Adapters of the last generation has a reference key for the right position coupling and zirconia or phosphorus bronze split sleeve for high alignment.

This **LC(Female) to SC(Female)** SC footprint type fiber optic hybrid adapter, Converting LC connector to SC Connector. Variable LC interface conversion SC interface. Provided a simple and reliable solution for connecting two different optic fiber transmission joints.

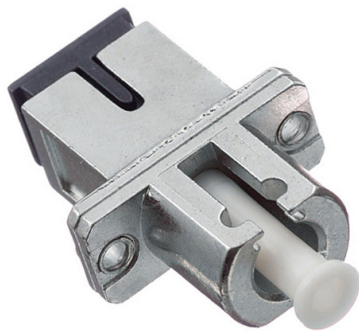
Material

Parts name	Material	Color
Housing body	Zinc alloy/PC/PEI	Metal/Blue/Green/Beige
Sleeve	High precision Ceramic sleeve	White
Dust Cover	ABS/Rubber	White/red/green/black

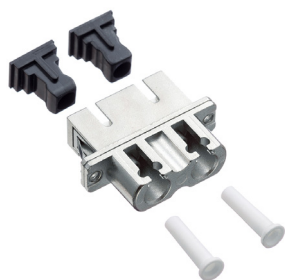
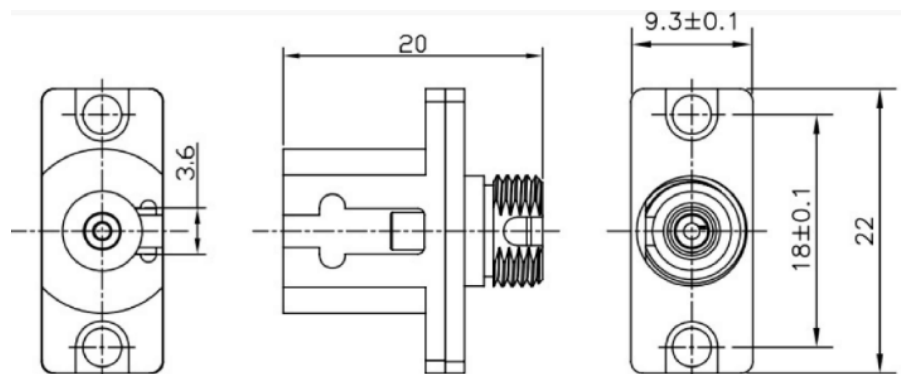
Specification:

Test item	(SM-9/125) UPC	(SM-9/125) APC	MM PC
Insertion Loss	$\leq 0.5\text{dB}$ (max) 0.3dB (mean)		
Return Loss	$\geq 50\text{ dB}$	$\geq 60\text{ dB}$	$\geq 35\text{ dB}$
Durability (500 Mating)	0.1dB Max.		
Withdrawal force(g/f)	200~600		
Storage Temp	$-40 \sim +85$		

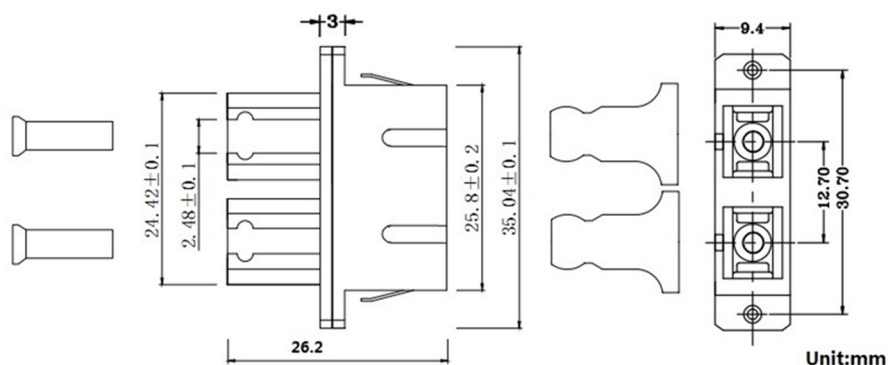
Products details



Simplex-Sc footprint 1 metal



Duplex -Sc footprint



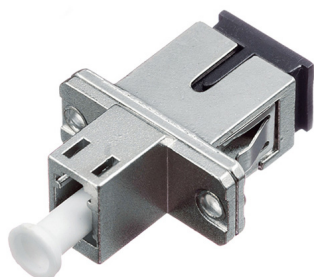
Available : SM UPC, SM APC, MM OM1 62.5/125, MM OM2/3/4 50/125



LC Female to SC Female Hybrid fiber adapter



Simplex-Sc footprint Plastic



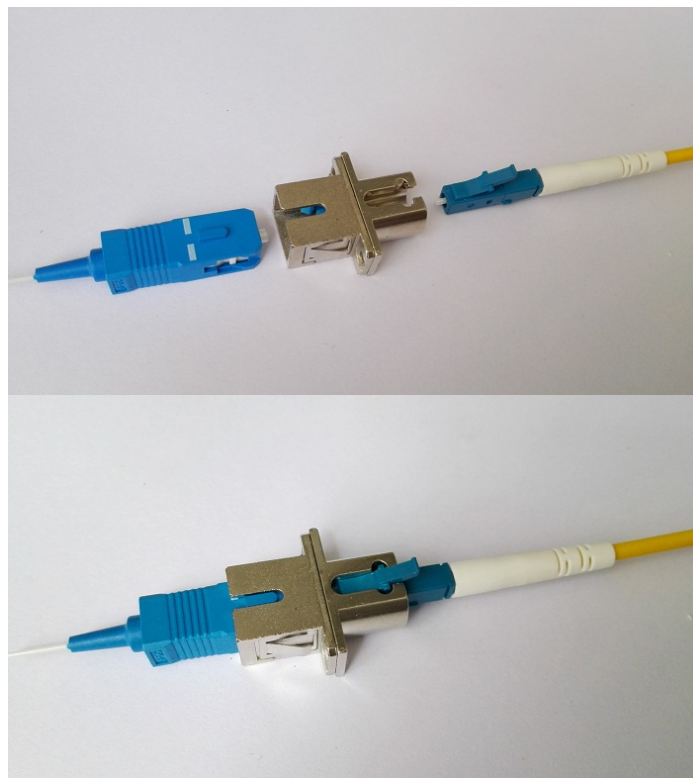
Simplex-Sc footprint 2



*2.5mm-1.25mm
High precision ceramic
sleeve*

Applications

Patch panels, ODF and other optical connections.
Optical networks demarcation and monitoring point



Features

Precision connection with sleeve
SM and MM connector can be used interchangeably
Low insertion loss, High Return loss
Good interchangeability and reliability
Meet IEC and ROHS standards
High precision of mechanical dimensions Accuracy

Order index

Products	-	Fibers	-	Fiber Mode	-	Fiber Port	-	Adapter Shape	-	Color
H2-Female to Female		1-Simplex		1- SM 9/125		A - FC/LC		1 - Standard		1 - metal
Fiber Adapter		2-Duplex		2- OM1 62.5/125		B - FC/SC		2 - SC footprint 1		2 - Blue
				3- OM2 50/125		C - FC/ST		3 - SC footprint 2		3 - Green
				4- OM3 50/125		D - LC/ST		4 - D hole		4 - Aqua
				5- OM4 50/125		E - LC/SC		5 - Square		5 - Beige
						F - SC/ST		6 - Rectangle		6 - meganta
						G - LC/E2000		7 - Rhombus		
						H - FC/E2000				
						I - DIN/FC				
						J - DIN/LC				
						K - DIN/SC				
						L - DIN/ST				
						M - SMA/SC				
						N - SMA/FC				
						O - SMA/ST				