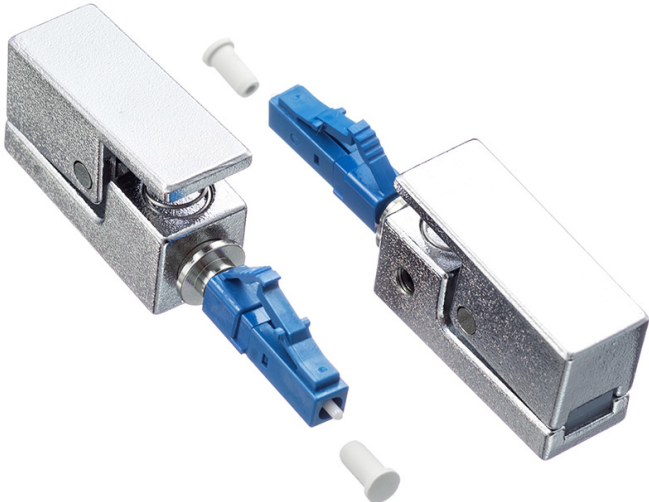


DATASHEET

LC Bare Fiber adapter

Square body



Oval body



OMC INDUSTRY CO.LIMITED

2018|En version1.0

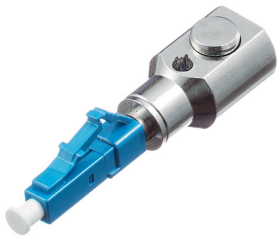
Description

Bare fiber adapters are used as the medium to link the bare optical fiber to fiber optic equipment. The bare fiber optic adapters have the bare optical fiber inside on one side; the other side of the adapter is a connector that can plug into the equipment. We supply SC,LC,FC and ST bare fiber adapters, they are used to quickly and easily terminate the fiber to the equipment.

Specification:

| Test item | Parameters | UPC | APC | MM PC |
|-------------------|---------------------|--------|--------|--------|
| Insertion Loss | SM: 1310nm/1550nm | ≤0.2dB | ≤0.3dB | ≤0.2dB |
| Return Loss | MM: 850nm/1300nm | ≥50 dB | ≥60 dB | ≥35 dB |
| Plug Service life | ≥1000times, <0.1 dB | | | |
| Tensile Strength | ≥100N, <0.1 dB | | | |
| Operation Temp | -40 ~ +85 | | | |
| Storage Temp | -40 ~ +85 | | | |

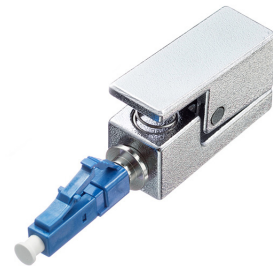
Products details



Oval body 1



Oval body 2



Square body

Applications

Temporarily connectorized bare fiber
 Testing bare fiber, fiber on the reel, fiber before and after installation
 Production line of fiber optic devices
 For fast and temporary fiber optic connections in communication system
 Temporary connections to OTDRs, Power Meters, Talk sets, Demo Equipment and Dark Fiber

Order index

| Products | - | Connector | - | Polish | - | Fiber Mode | - | Body shape |
|-----------------------|---|-----------|---|--------|---|-----------------|---|------------|
| H1-Bare Fiber Adapter | | 1-LC | | 1- UPC | | 1- SM 9/125 | | 1 - Square |
| | | 2-SC | | 2- APC | | 2- OM1 62.5/125 | | 2 - Oval 1 |
| | | 3-FC | | | | 3- OM2 50/125 | | 3 - Oval 2 |
| | | 4-ST | | | | 4- OM3 50/125 | | |
| | | | | | | 5- OM4 50/125 | | |