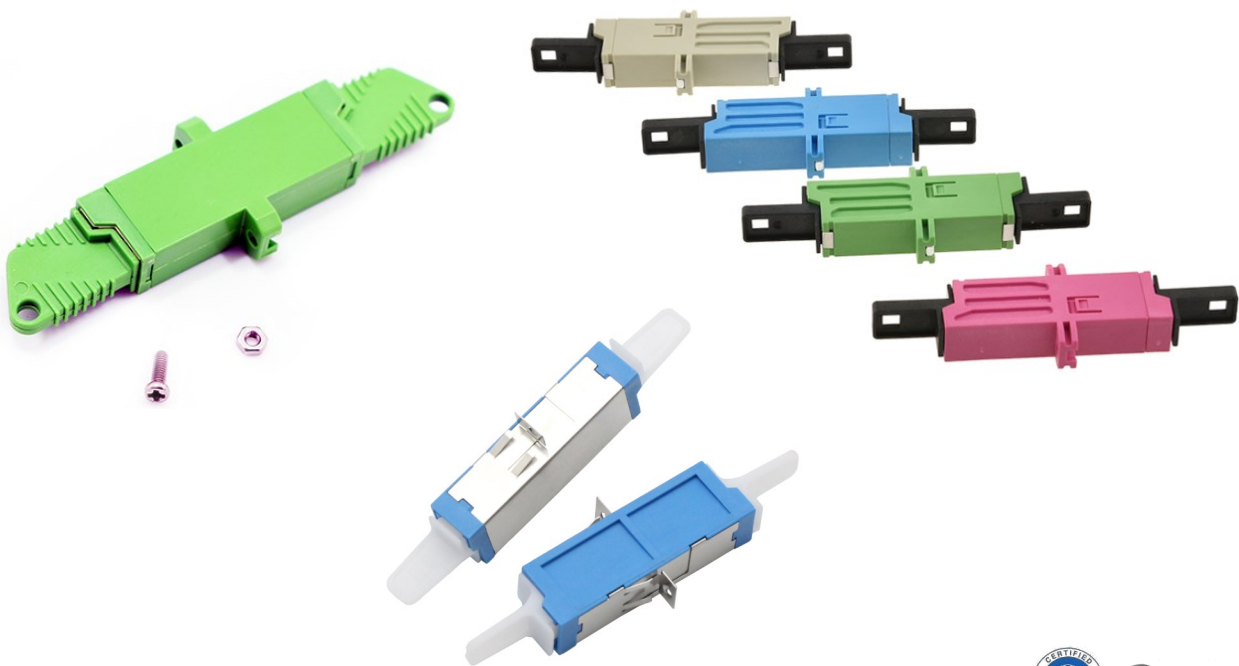


# DATASHEET

## E2000 Fiber Adapter



RoHS



OMC INDUSTRY CO.LIMITED

2018|En version1.0

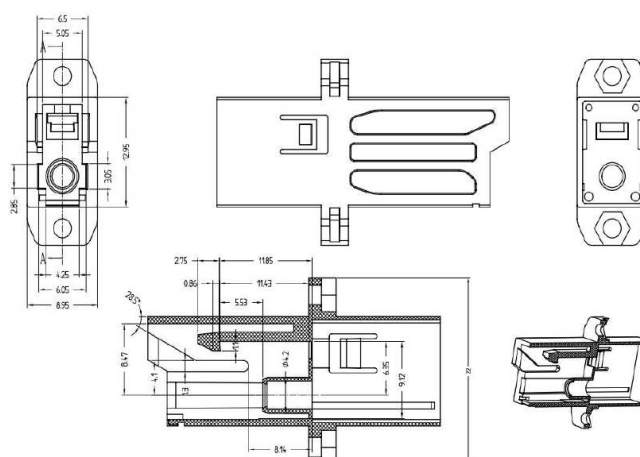
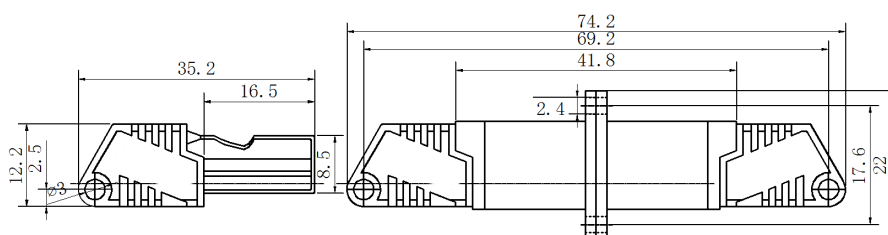



**E2000 Adapter** are developed to couple and mate two E2000 connector plugs. The E2000 fiber optic adapter features injection-molded PBT housing, rated to the UL94V-01 Flammability Index. Spring-loaded shutters protect against dust and scratching. A high-quality split ceramic sleeve ensures high performance over 1000 mating cycles. The adapter may be ordered with color coded housing and frames.

## Products Materials

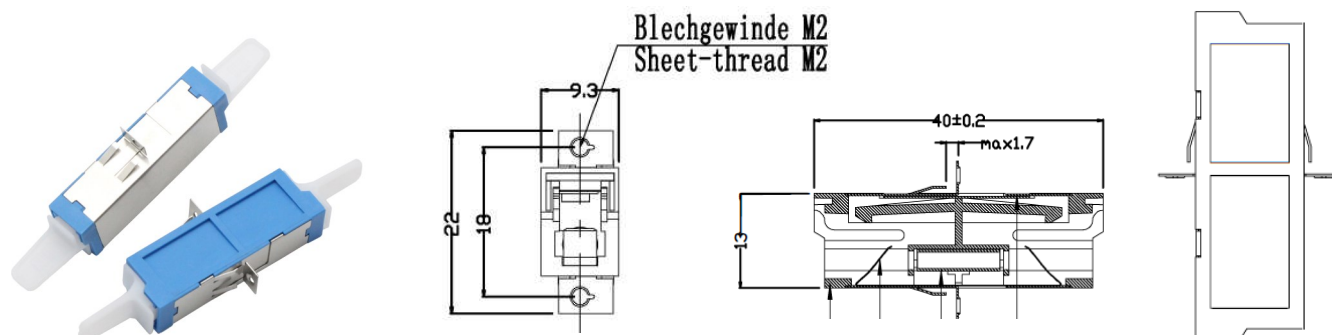
Parts name	Material	Color
Housing body	PBT	SM APC:Green;SM UPC:Blue MM PC: Beige;OM4 PC:Magenta
Metal Clip/Flange	SUS304	Slivery
Sleeve	High precision Ceramic sleeve	White
Dust Cover	PBT	Green/Blue/Black

Test item	(SM-9/125) UPC	(SM-9/125) APC	MM PC
Insertion Loss	≤0.2dB	≤0.2dB	≤0.2dB
Return Loss	≥50 dB	≥60 dB	≥35 dB
Durability (500 Mating)	0.1dB Max.		
Withdrawal force (g/f)	2.0N ~ 5.9N (200gf ~ 600gf)		
Storage Temp (°C)	-40 ~ +85		

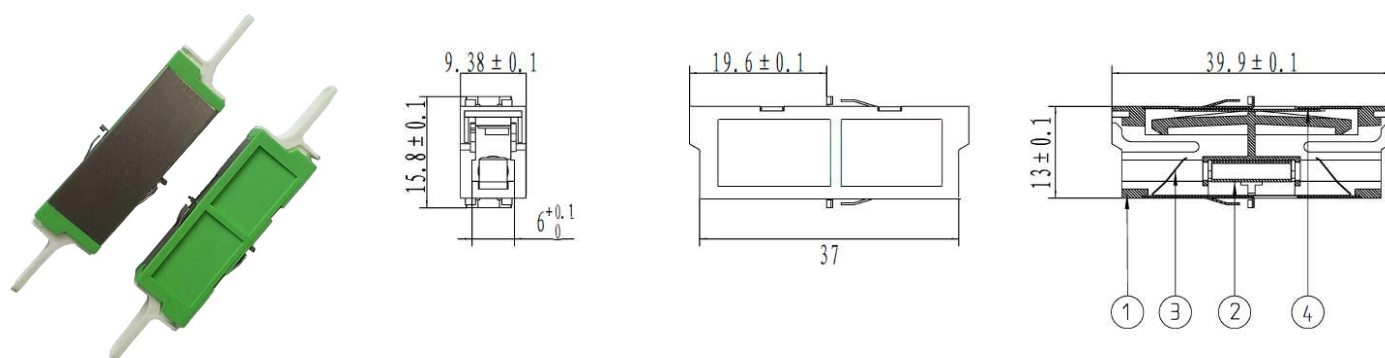


www.omcftth.com

Available for Simplex of SM UPC, SM APC, MM OM1 62.5/125, MM OM2,OM3,OM4 50/125



R Style E2000 Adapter With Flange



R Style E2000 Adapter With no Flange

### Features:

Compliant with European (EN 186270) and International (IEC 61754-15) standards.  
 Push-pull locking mechanism for easy installation  
 Precision connection with sleeve  
 SM and MM connector can be used interchangeably  
 Low insertion loss, High Return loss  
 Good interchangeability and reliability  
 Meet IEC and ROHS standards  
 High precision of mechanical dimensions Accuracy

### Application:

Patch panels, ODF and other optical connections.  
 Optical networks demarcation and monitoring point

### Order index

Products	Ports	Fiber Port	Structure	Cap Color
H6- Fiber adapter	1-Simplex 2-Duplex	5 - E2000	1- No Logo (Standard one with flange) 2- China Made H Style with Flange 3 - China Made R Style with Flange 4 - China Made R Style withno Flange	1 - Blue 2 - Beige 3 - Green 4 - Magenta