

DATASHEET

LC&SC Flex Angle boot Fiber Patch Cables

Make High-speed Optical network Racks&equipment



OMC INDUSTRY CO.LIMITED

2018|En version1.0

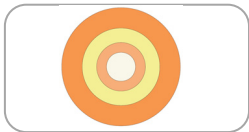


LC&SC Flex Angle boot Fiber Patch Cables

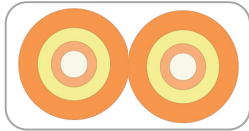
Description

The Flex-Angle boot is designed to bend any angle or direction from straight to 90°. OMC flex angle boots for LC&SC fiber optic connectors are available on any single-mode or multimode patch cord. They are designed so the installer can pre-bend the boot into any direction or angle. This position is maintained for optimal network performance but, can be reshaped at any time or straightened for connector disconnect. This enables perfect installation of the connect- or in unique applications such as, tight constraint areas or high density environments. These fiber optic patch cords with LC&SC flex boots are ideal for cable management situations where additional fiber bend protection is desired.

Products Materials



G652D, G657A1, G657A2/B2, G657B3, OM1, OM2, OM3, OM4, OM5 Fibers
900um, 1.2mm, 1.6mm, 1.7mm, 1.8mm, 2.0mm, 2.4mm, 2.6mm, 2.8mm OD cable
PVC (Riser/OFNR), LSZH, Plenum (OFNP) Jacket materials



G652Dm G657A1, G657A2/B2, G657B3 Fibers
OD: 1.2x2.5mm, 1.6x3.3mm, 1.7x3.5mm, 1.8x3.7mm, 2.0x4.1mm, 2.4x4.9mm, 2.6x5.3mm, 2.8x5.7mm
PVC (Riser/OFNR), LSZH, Plenum (OFNP) Jacket materials



High quality SM Ceramic ferrule, Good concentricity < 0.5um
High quality MM Ceramic ferrule, Good concentricity < 4.0um



High quality Standard LC&SC connector with flexible Boot. Suitable for any Rack&ODF.
SC: TIA/EIA, FOCIS3, GR-326, NTT-SC IEC61754-4 and JIS C5973.
LC: TIA/EIA, FOCIS10, GR-326 EIA/TIA-604-10, IEC61754-20 and JIS C5973.

LC

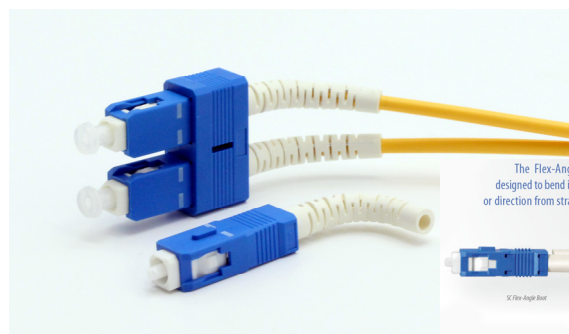
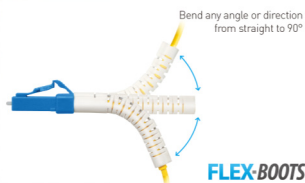
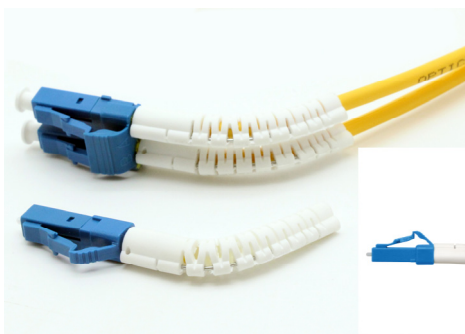
Standard, Uniboot.

Typical Applications: High-density connections, SFP and SFP+ transceivers, XFP transceivers.

SC

Standard boot, Short boot

Typical Applications: Telecom; GPON; EPON; GBIC.



Standard Compliance

- TIA 604 (FOCIS)
- TIA/EIA 492AAAE
- IEC 61754
- IEC 60793-2-10
- IEC61300-3-35
- YD/T1272.1-2003
- RoHS, ISO9001 Compliant

Features

- High quality zirconia ferrules.
- Good repeatability and interchange.
- Flame-retardant, rugged and durable jacket.
- 100% optically tested for insertion loss to ensure high quality

Application

- Data Center
- Enterprise
- Fiber to the X (FTTX)
- LAN and WAN
- CATV Network
- Telecommunications Network

Optical Specifications

Connector	SC,LC	Polish	PC,UPC,APC
Fiber Mode	9/125μm, 50/125μm, 62.5/125μm,	Jacket Color	SM:Yellow/Blue/White; OM1&OM2: Orange; OM3:Aqua; OM4:Aqua/Violet/ Magenta
Available boot	White 2.0mm/3.0mm	Wavelength	SM:1310/1550nm MM:850nm
Cable Type	Simplex& Duplex	Jacket Material	LSZH/PVC/OFNR/OFNP
Insertion loss	≤0.3dB(IEC Grade C)	Insertion loss	≤0.12dB(IEC Grade B)
Return loss	SM UPC ≥ 50dB(min) SM APC ≥ 60dB(min) MM PC≥ 35dB(min)	Interchangeability &Vibration	≤0.2dB
Operating tem- perature	-40~75°C	Storage temperature	-45~85°C

Geometric Specification (3D interferometer)

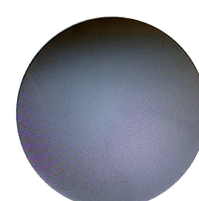
Items		Parameter	
Polishing		PC	APC
ROC	SC	10 ~ 25	5 ~ 12
	LC	7~ 25	5 ~ 12
Apex Offset		≤ 70	
Fiber Spherical Height		±100	
Angle		± 0.5	8 ± 0.5

End-face Quality (SM)

Zone	Range (μm)	Scratches	Defects	Reference
A: Core	0 to 25	None	None	IEC 61300-3-35:2015
B: Cladding	25 to 115	None	None	
C: Adhesive	115 to 135	None	None	
D: Contact	135 to 250	None	None	
E: Rest of ferrule		None	None	



SM UPC



SM APC

End-face Quality (MM)

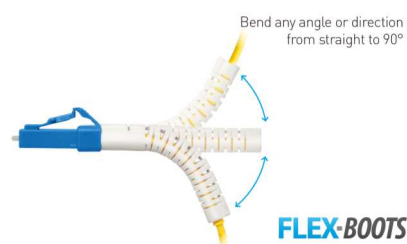
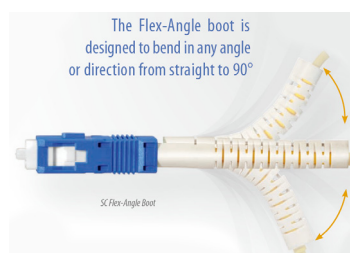
Zone	Range (μm)	Scratches	Defects	Reference
A: Core	0 to 65	None	None	IEC 61300-3-35:2015
B: Cladding	65 to 115	None	None	
C: Adhesive	115 to 135	None	None	
D: Contact	135 to 250	None	None	
E: Rest of ferrule		None	None	



MM PC

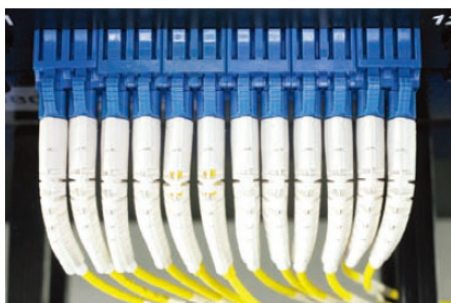
Length Tolerance

Overall Length(L)(m)	length of tolerance(cm)
$0 < L < 1$	+5/-0
$1 < L < 10$	+10/-0
$10 < L < 40$	+15/-0
$40 < L$	+0.5% x L/-0



Product Highlights

The Flex-Angle boot is designed to bend in any angle or direction from straight to 90°



Packaging

This easily taken and well-protected fiber optical cable package has been labelled and marked by OMC as de-fault .Standard carton size : 34*22*15 cm; 44*34*24 cm ; 54*39*34 cm . Which carton to be used depends on goods Qty . Packing can be customized.



1,Self-seal PE Bag



2 Bubble Bag



3, Paper Carton



4,fumig-free freight tray