

SPECIFICATION

FTTX PRE-CONNECTORIZED TERMINAL BOX PTB-912F



Description

FTTx Pre-connectorized Terminal Box PTB-912F some Splice trays, a tissue system with optical fiber splicing tray and 9 or 12 bayonet type enhanced pre-connectorized waterproof SCAPC adapters, which can be accessed and connected from the outside of the box.

The box is used as a termination point for the feeder cable to connect with drop cable in FTTx network system. The fiber splicing, splitting, and distribution can be done in this box, and to form the optical interconnection point between these networks and the distributed network. It allow the connection to a single optical plug in the customer's home on demand. and meanwhile it provides solid protection and management for the FTTx network building.

The closed box is completely sealed and weatherproof, so it can be installed outside and inside the exterior wall, wall, roof, basement, garage, yard, wardrobe, column or building installed on the messenger.

Specification

Configuration table	Wall mounting	Pole mounting installation
Size(mm)	290*210*82	290*210*82
Material	PC/ABS	PC/ABS
Color	black	black
Pre-connectorized ports	9Cores/12cores	9Cores/12cores
Suitable PLC Splitter	1x8 or 1x4 Blockless type	
Inner box size(mm)	300*220*95	300*220*115
Individual weight(kg)	1.3	1.4
Outer box size(mm)	500*310*460	600*310*460
Gross weight(kg)	13.7	14.7
Outer box capacity(pcs)	10	10

Pre-connectorized waterproof SCAPC adapters Details



Reserved hole for waterproof Pre-connectorized SCAPC adapter



OMC's Waterproof SCAPC adapter<0.2dB

OMC's Waterproof Rubber boot+standard SCAPC FTTX Drop patch cord

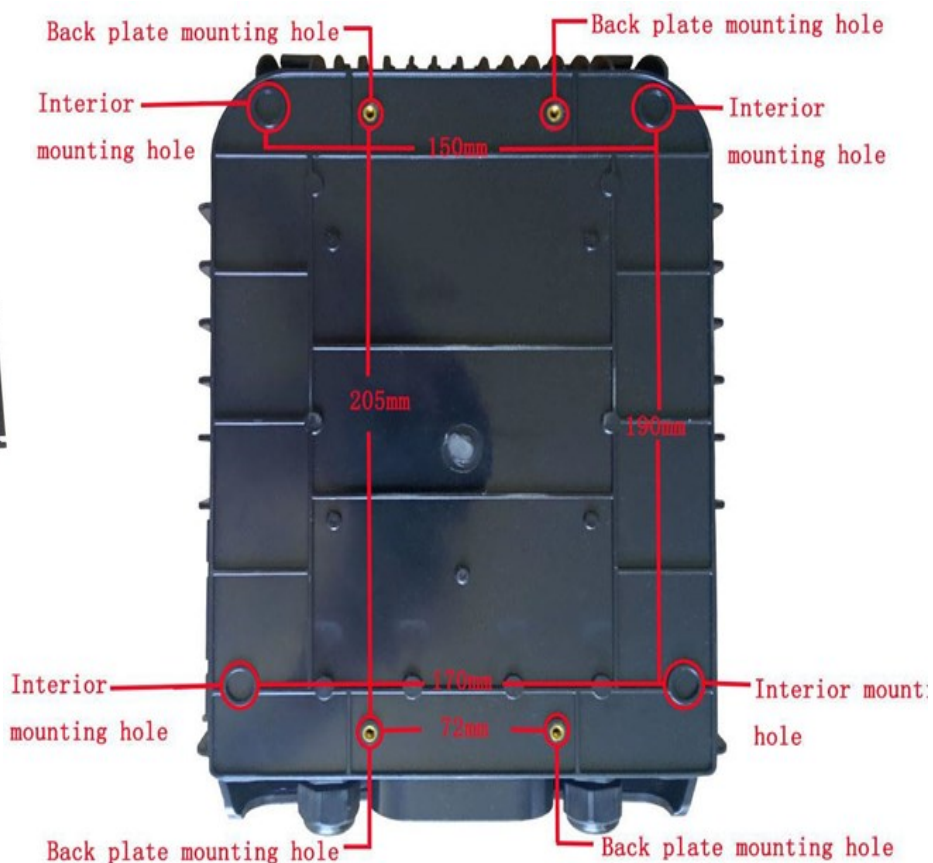
Features:

- Water-proof design with IP-65 Protection level
- Capacity of 9 or 12 bayonet enhanced pre-connected optical burst output. The optical connection ports can be accessed from the outside without opening the chassis.
- Clamping for feeder cable and drop cable, fiber splicing, fixation, storage, distribution...etc all in one.
- Cable, pigtails, and patch cords are running through their own paths without disturbing each other.
- Blockless type PLC splitter installation, easy maintenance.
- Distribution panel can be flipped up, feeder cable can be placed by expression port, easy for maintenance and installation.
- Box can be installed by the way of wall-mounted or poled-mounted, suitable for both indoor and outdoor use.
- Wall Mount and Pole mount Install

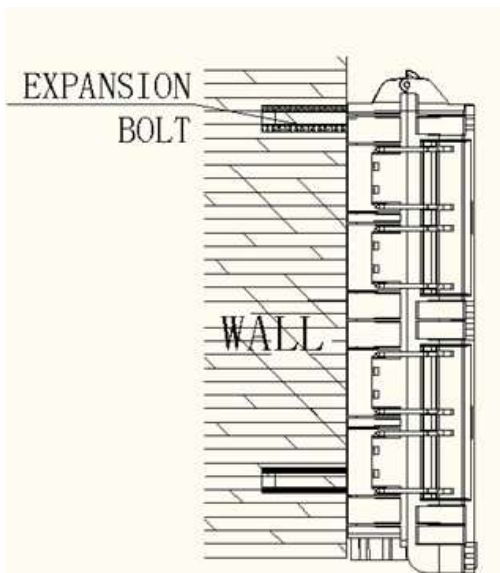
Cable&Splitter Deployment



Product mounting hole



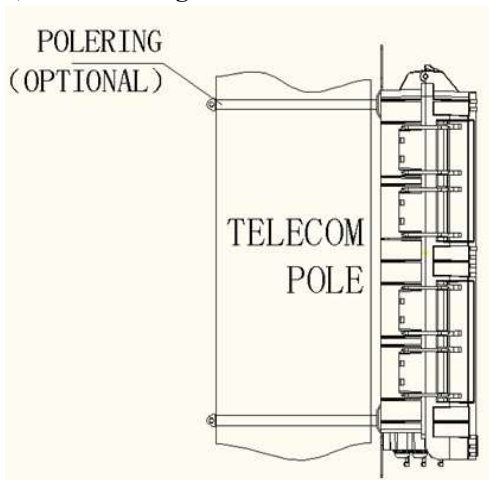
1, Wall mounting Installation



Accessories-Standard



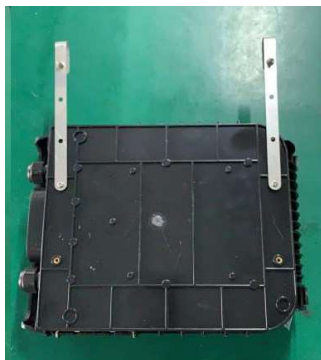
2,Pole mounting installation



Accessories-Standard



3, Aerial Installation



Accessories-Standard

