

# SPECIFICATION

## FTTX PRE-CONNECTORIZED TERMINAL BOX PTB-24A



## Description

It consists of 2 optical cable inlet and 24 outlet PORTS, some Splice trays, a tissue system with optical fiber splicing tray and 24 x bayonet type enhanced pre-connectorized waterproof SCAPC adapters, which can be accessed and connected from the outside of the box.

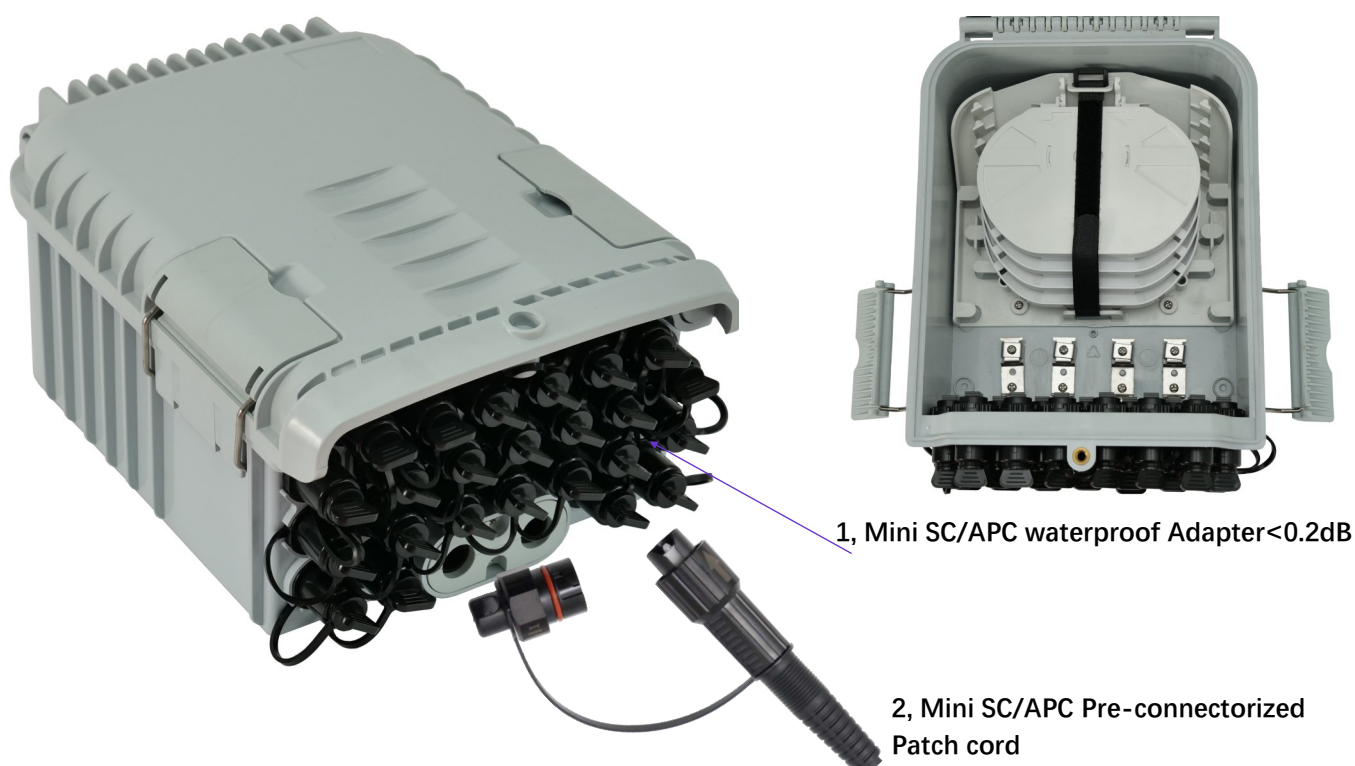
The box is used as a termination point for the feeder cable to connect with drop cable in FTTx network system. The fiber splicing, splitting, and distribution can be done in this box, and to form the optical interconnection point between these networks and the distributed network. It allow the connection to a single optical plug in the customer's home on demand. and meanwhile it provides solid protection and management for the FTTx network building.

The closed box is completely sealed and weatherproof, so it can be installed outside and inside the exterior wall, wall, roof, basement, garage, yard, wardrobe, column or building installed on the messenger.

## Specification

Configuration table	Wall mounting	Pole mounting installation
Size(mm)	290*210*133	290*210*133
Material	PC/ABS	PC/ABS
Color	Black,Grey,White	Black,Grey,White
Pre-connectorized ports	24 cores	24 cores
Suitable PLC Splitter	1x8 or 1x16 Blockless type	
Inner box size(mm)	300*220*137	300*220*147
Individual weight(kg)	1.5	1.6
Outer box size(mm)	710*310*460	755*310*460
Gross weight(kg)	17.5	18.7
Outer box capacity(pcs)	10	10
Input cable OD MAX(mm)	8-16	8-16

## Pre-connectorized waterproof SCAPC adapters Details



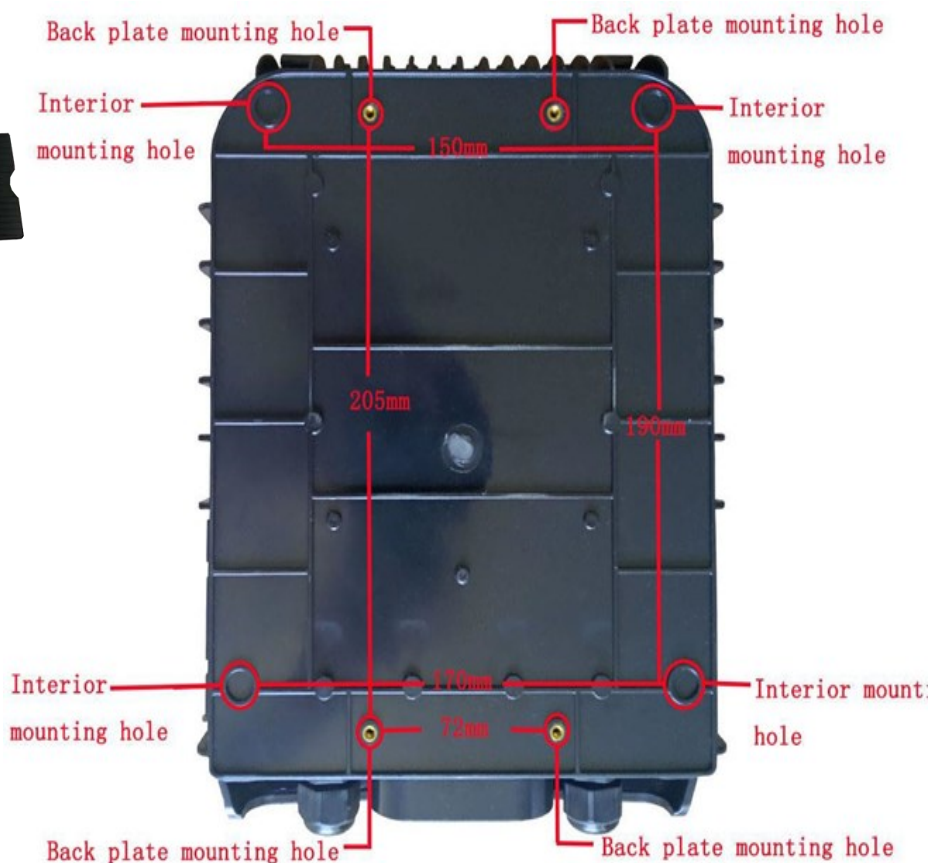
#### Features:

- Water-proof design with IP-65 Protection level
- Capacity of 24 bayonet enhanced pre-connected optical burst output. The optical connection ports can be accessed from the outside without opening the chassis.
- Clamping for feeder cable and drop cable, fiber splicing, fixation, storage, distribution...etc all in one.
- Cable, pigtails, and patch cords are running through their own paths without disturbing each other.
- Blockless type PLC splitter installation, easy maintenance.
- Distribution panel can be flipped up, feeder cable can be placed by expression port, easy for maintenance and installation.
- Box can be installed by the way of wall-mounted or poled-mounted, suitable for both indoor and outdoor use.
- Wall Mount and Pole mount Install

#### Cable&Splitter Deployment

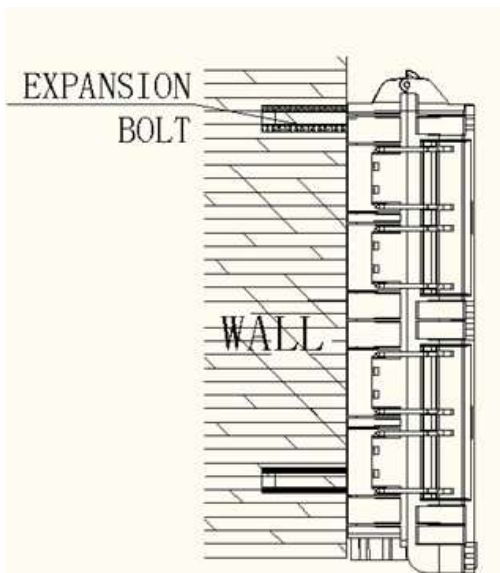


#### Product mounting hole





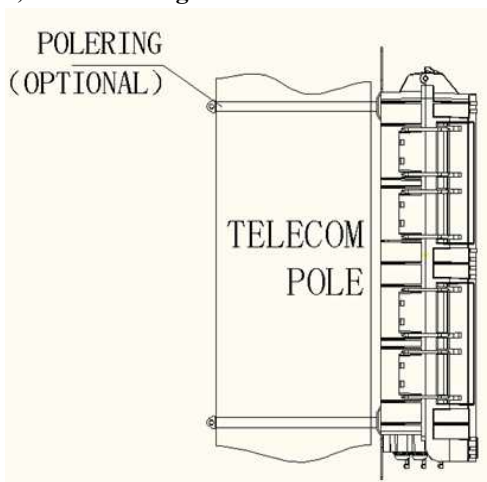
### 1, Wall mounting Installation



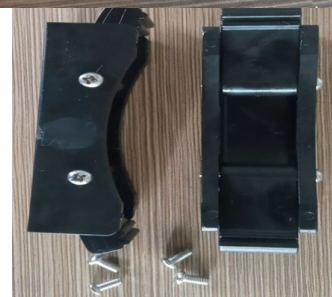
Accessories-Standard



### 2, Pole mounting installation



Accessories-Standard



### 3, Aerial Installation



Accessories-Standard

