

SPECIFICATION

FTTH FIBER ACCESS TERMINAL CLOSURE - OFATC-24B



Description

OFATC-24B, which made of Modified polymer plastic, It is able to hold up to 24 subscribers and 96 splicing points as closure. It is used as a splicing closure and a termination point for the feeder cable to connect with drop cable in FTTH network system. It integrates fiber splicing, splitting, distribution, storage and cable connection in one solid protection box.

Features with ruggedness, which is tested under harsh conditions and stand up to even the most severe condition of moisture, vibration and extreme temperatures. Humanized design helps user get better experience and safer operating environment

Features:

- Water-proof design with IP-68 Protection level.
- Integrated with flap-up splice trays
- 1 mid-span cable entrance(10-16.5mm) for uncut cable and 2 reserved cable entrances for distribution cable gland(8-13.5mm) ; 24x Drop Cable output ports.
- Impact test: IK10, Pull Force: 100N, Full rugged design
- Maximum 96F splice capacity, stainless anti-rust bolts and nuts.
- Plug-and-play installation, easy for maintenance and expansion Fiber bend radius control more than 40mm
- 180 degree access with buckled lock structure.
- 1*8 or 1*16 PLC Splitter can be installed in each splice tray as option.
- Mechanical sealing structure and mid-span cable entry.
- Rotatable and dis-mountable spice tray for easy splicing
- Wall mount and pole mount installation



Specification:

Model	OFATC-24B	
Adapter QTY	24pcs of SC	
Cable Ports	1 uncut port	2 round ports
Applicable cable OD	10-16.5mm	8-13.5mm
Drop cable ports	24 ports	
Applicable cable OD	2x3mm, 2x5mm, 4-7mm FTTH drop cable	
Dimension	385*245*155mm	
Material	Modified polymer plastic	
Color	Black	
Max Splicing Capacity	144Fibers(6Trays, 24Fibers/Tray)	
Applicable Splitter	1pcs of 1x16 PLC splitter or 3pcs of 1x8 PLC splitter	
IP Grade	IP 68	
Impact test	K10	
Pull Force	100N	
Midspan Entry	YES	
Storage(Tube/Micro cable)	YES	
Net weighth (Kg)	4kg	
Gross weighth (Kg)	5kg	

Standard Accessories

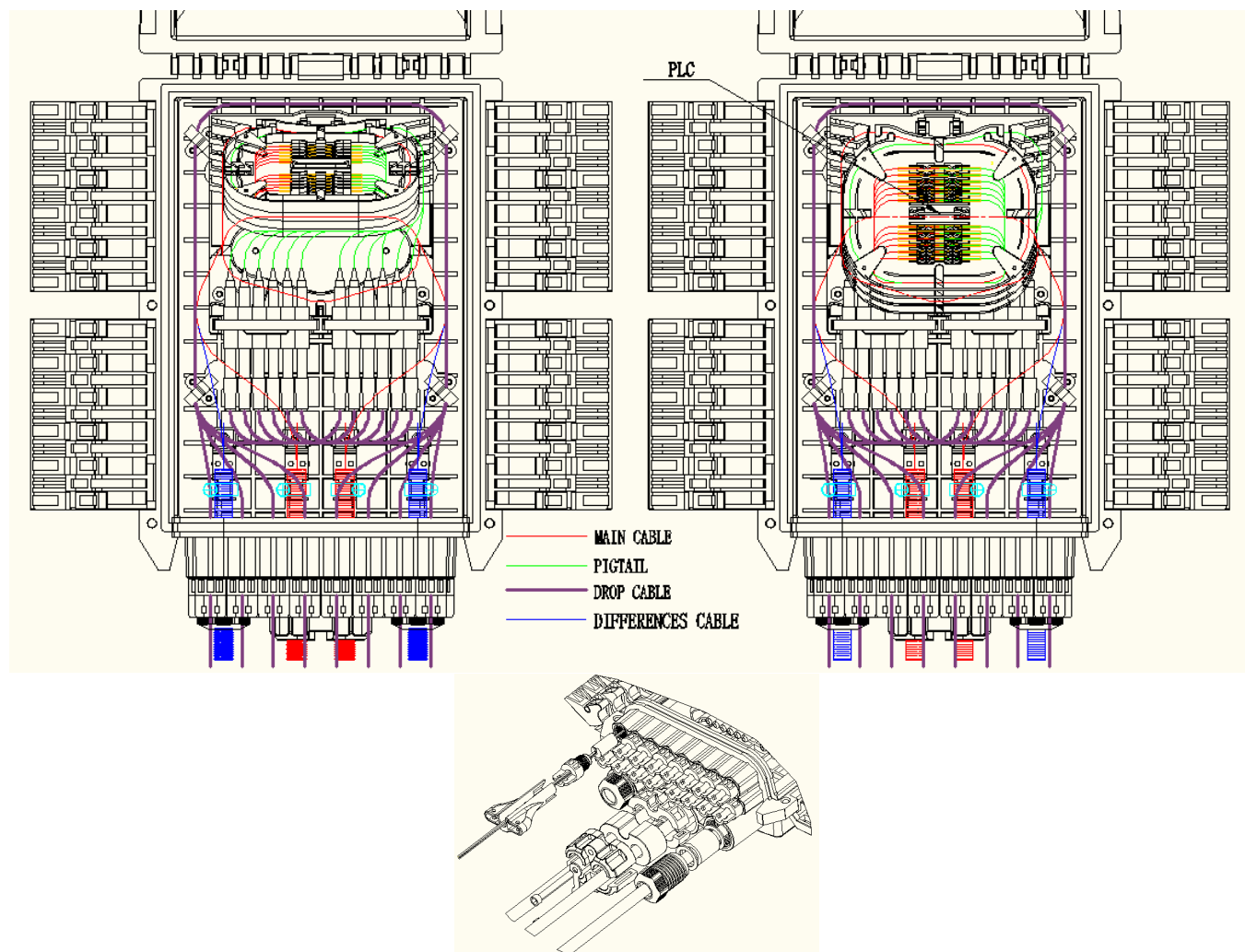
Splice cassette and cable management tool, installation nuts and bolts, protection sleeves, hose clamp, cable tube, wreath, cover holder, rubber seal for cable entrance.



Optional Accessories: Pole ring



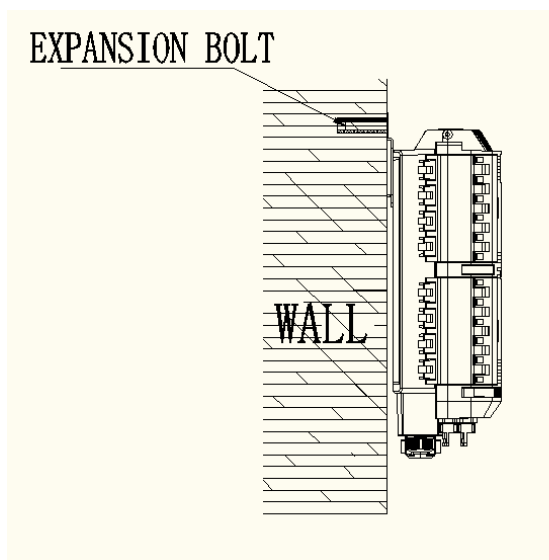
Product cable ways



Installation

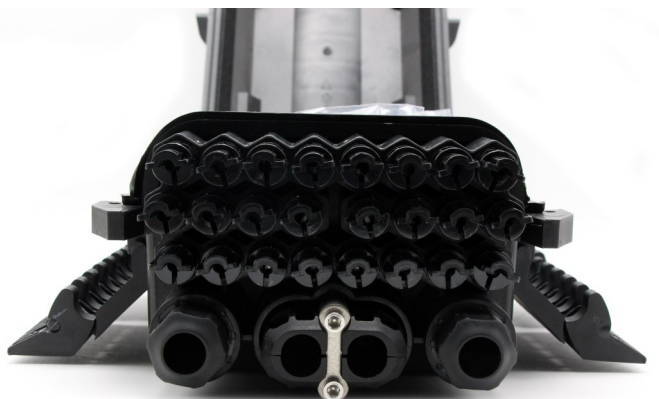
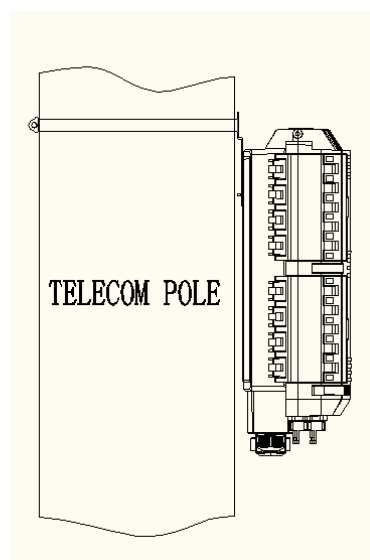
1 . Wall-mounted installation

According to the size of table 1 of hanging wall with percussion drill play two holes on the wall, knock into the metal tube, will be installed back the case according to the punching position on the wall, and completely fixed screw



2 . Pole-mounted installation

Fix 1 set of the easy pole ring to the telecom pole .



Application

Fiber Optical Network.

FTTX project.

Optical Fiber distribution Network.