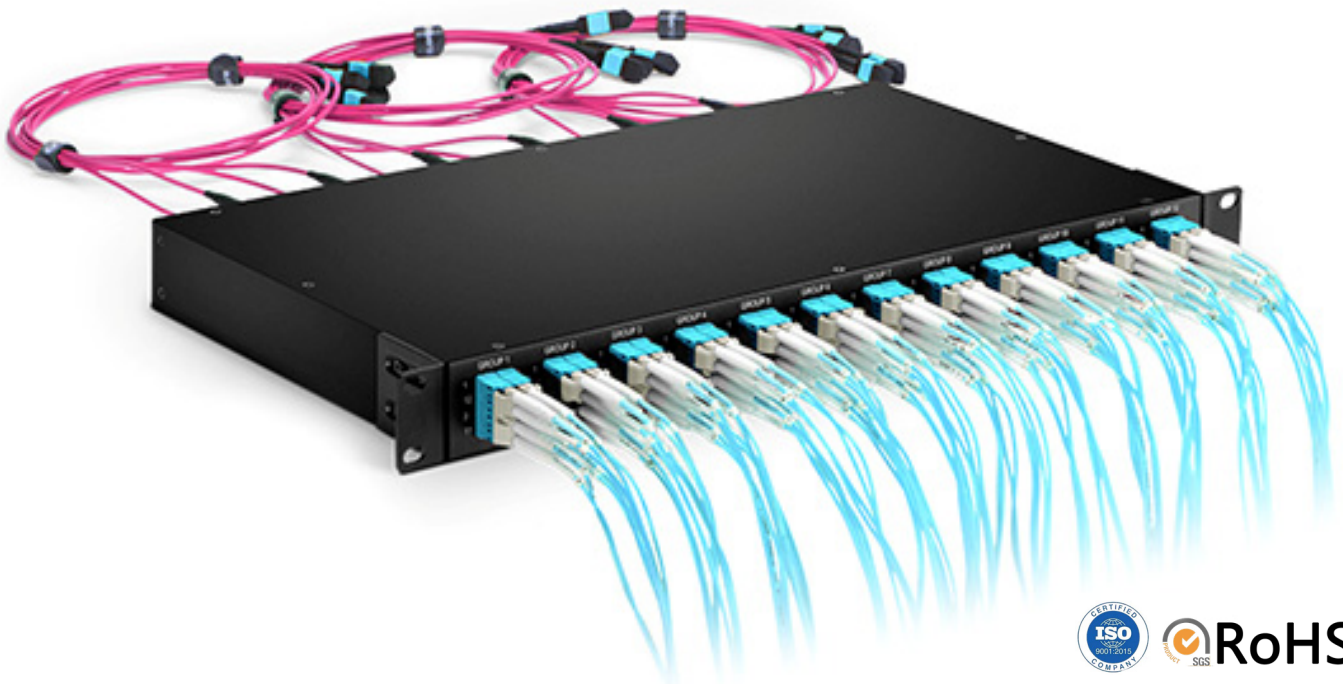




OMC INDUSTRY CO.LIMITED

FHD 1U MTPMPO-LC 96F Solid design rack mount Patch Panel -No Cassette modular design





FHD 1U MTP&MPO-LC 96F Solid design rack mount Patch Panel-No Cassette module

Products Description

High Density 96Fibers 1U 19" Breakout Fiber Patch Panel is designed to connect 40G QSFP ports with MTP/MPO fiber cables, mapping to the back of the panel, then breaking out as 48*10G on the front panel with LC fiber cables.



The Patch panel are pre-terminated and designed to mount into 19" wide telecommunications racks allowing 96 fiber connections to be deployed in one rack unit (1U) without additional support infrastructure. This ensures efficient use of space, quick deployment, and the highest reliability for the lowest installed cost. This configuration is ideally suitable for 40G/100G networks

Products Details

Product name	FHD 1U MTP&MPO-LC 96F Solid design rack mount Patch Panel-No Cassette module de- sign	Part no.	FHD3F-xx
Front Interfaces	24xLC quad	Rear Interfaces	12x MTP/MPO-8 Male (pinned) Key up-Key down
Insertion Loss	MPO/MTP ≤ 0.35 dB, LC ≤ 0.3 dB	Return Loss	MPO/MTP ≥ 60 dB (SM) 20dB (MM) , LC ≥ 50 dB (SM) 35dB (MM)
MPO&MTP adapter	Key up to key down	Dimensions	44.2mmx 482.5mmx 250.4mm
Material	Aluminum alloy	Total Fiber Count	96Fiber

Features

- Maximizes density with up to 96 fiber connections in 1U for efficient utilization of rack space.
- Allows for an easy upgrade path moving 40GbE to 4x 10GbE or 100GbE to 4x 25GbE connectivity.
- Provides reduced overall insertion loss with low channel to channel variability for improved channel link loss performance.
- Improved reliability and quick deployment to reduce installation time and cost.

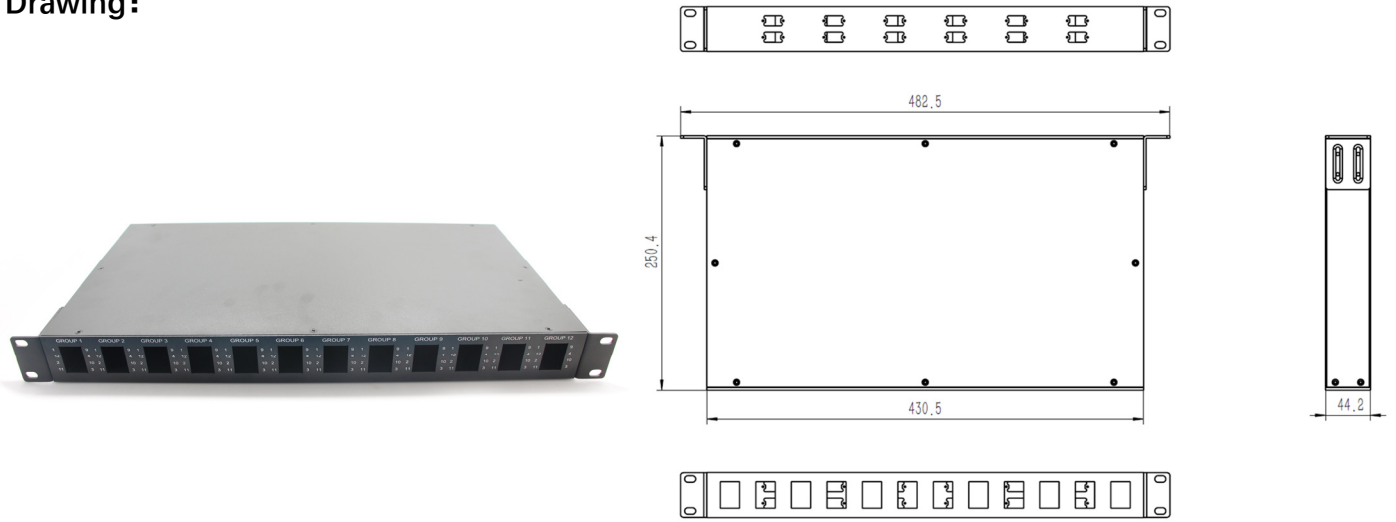
Application:

High Density 96Fibers 1U 19" Breakout Fiber Patch Panel are used in high-density network applications as specified in the Data Center Cabling Standard TIA 942 for cross connects in main distribution, horizontal distribution, and equipment distribution areas.



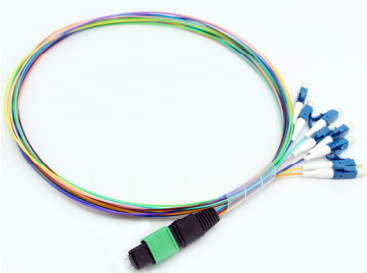
FHD 1U MTP&MPO-LC 96F Solid design rack mount Patch Panel-No Cassette module

Drawing:



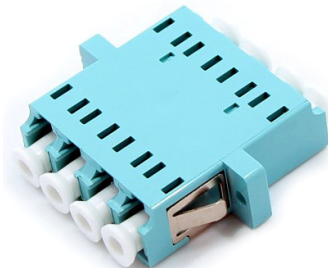
Relate Accessories

MPO/MTP(Male)-LC
8F 0.9mm fanout 30cm



Available for SM, OM1,OM2,OM3,
OM4,OM5 Fanout 900um cables

LC Quad adapter



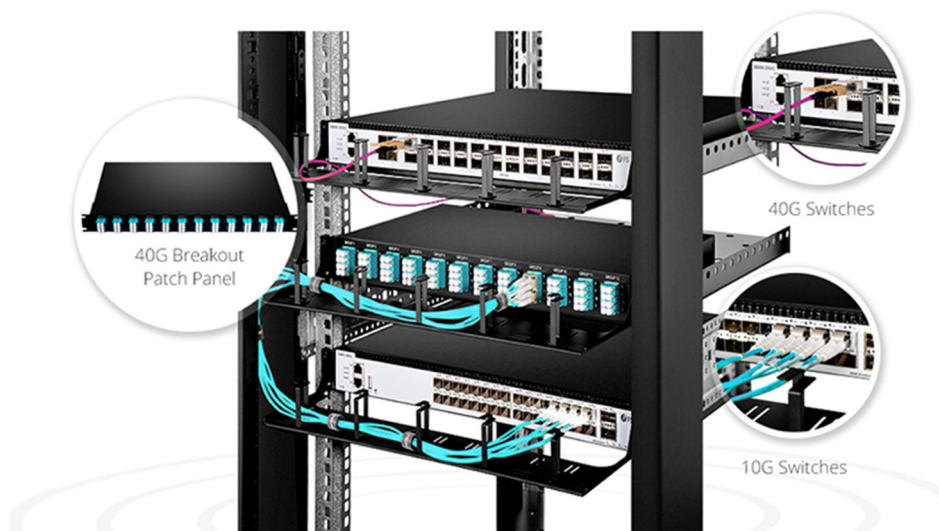
Available for SM Blue, MM beige, OM3 Aqua, OM4
Magenta.

MPO/MTP adapter
Key up-Key down



Maximum Utilization -40G Breakout Fiber Patch Panel.

In base 8 wiring, sufficiently and effectively realizing the current application from QSFP+ to SFP+, despite of compatibility, and better management, even future-proofs your network





Order Index

Full loaded MPO/MTP-LC 144F Patch panel

Cassette	MPO/MTP Quality level	Fiber mode
FHD3F	0-unloaded	0- unloaded
	1-Standard loss MPO Male-LC	1- G657A1
	2-Super low loss MPO Male-LC	2-G657A2/B2
	3-Standard loss MTP Male-LC	3-G657B3
	4-Super low loss Elite MTP Male-LC	4-BIF OM1
		5-BIF OM2
		6-BIF OM3
		7-BIF OM4
		8-BIF OM5