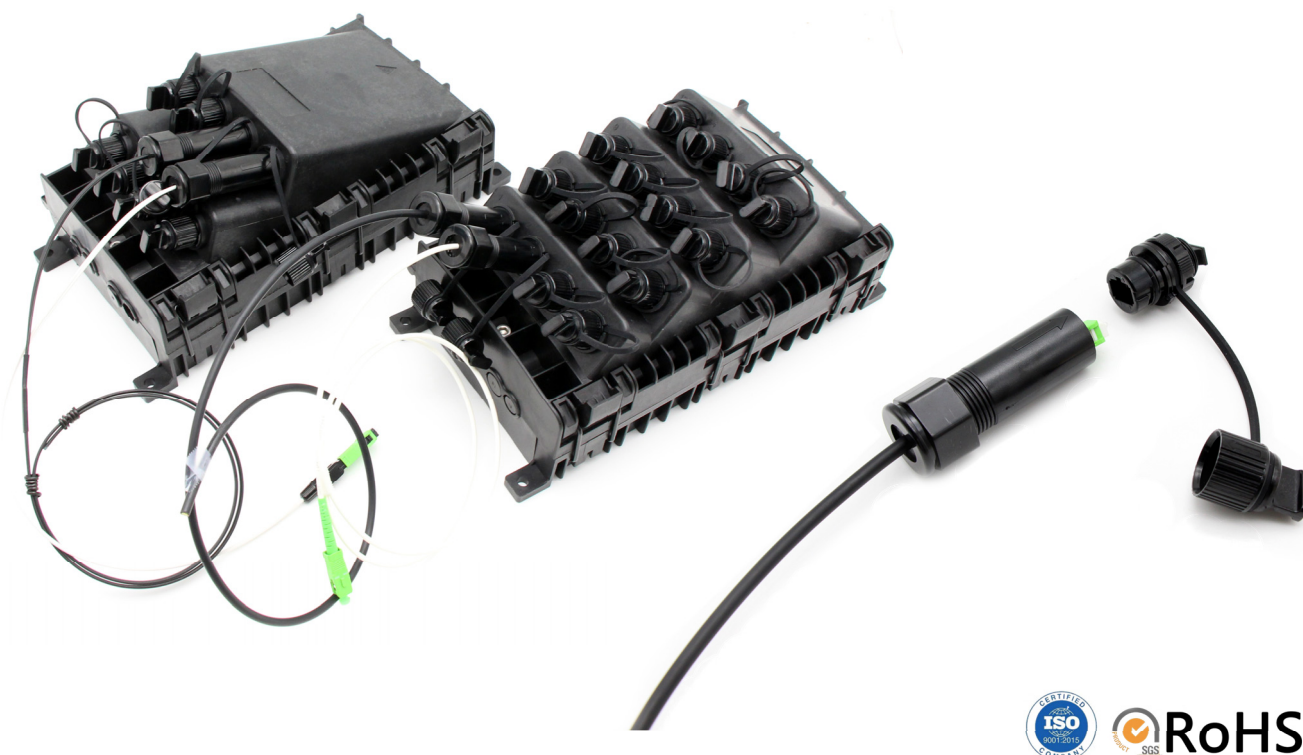


DATASHEET

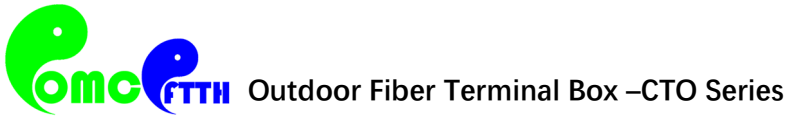
Outdoor Fiber Terminal Box with 8&16pcs of reinforced bayonet Adapters&Connectors

For FTTH, PON ,OBD Cabling system



SHENZHEN OMC COMMUNICATION CO.LIMITED

2023|En version1.0



Description

It consists of 4 optical cable inlet and outlet, some Splice trays, a tissue system with optical fiber splicing tray and 8 or 16 bayonet type enhanced optical adapters, which can be accessed and connected from the outside of the box.

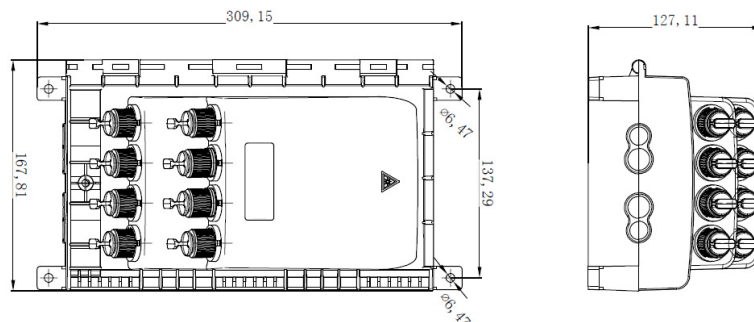
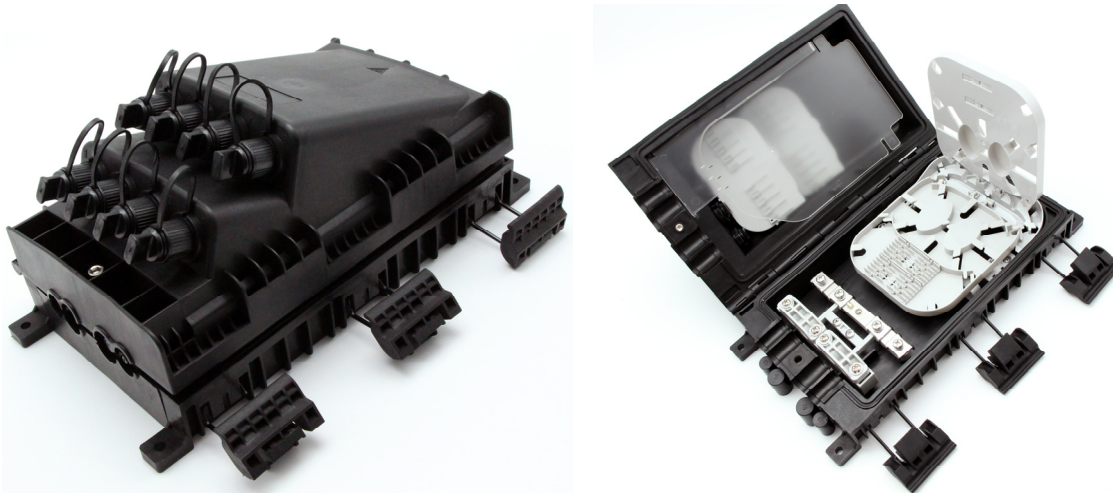
The box is used as a termination point for the feeder cable to connect with drop cable in FTTx network system. The fiber splicing, splitting, and distribution can be done in this box, and to form the optical interconnection point between these networks and the distributed network. It allow the connection to a single optical plug in the customer's home on demand. and meanwhile it provides solid protection and management for the FTTx network building.

The closed box is completely sealed and weatherproof, so it can be installed outside and inside the exterior wall, wall, roof, basement, garage, yard, wardrobe, column or building installed on the messenger.

Features:

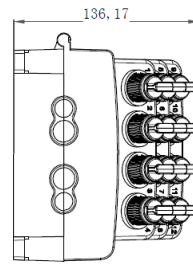
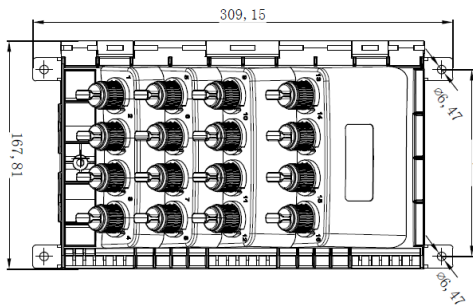
- Water-proof design with IP-68 Protection level
- Capacity of 8 or 16 bayonet enhanced pre-connected optical burst output. The optical connection ports can be accessed from the outside without opening the chassis.
- Clamping for feeder cable and drop cable, fiber splicing, fixation, storage, distribution...etc all in one.
- Cable, pigtails, and patch cords are running through their own paths without disturbing each other.
- Blockless type PLC splitter installation, easy maintenance.
- Distribution panel can be flipped up, feeder cable can be placed by expression port, easy for maintenance and installation.
- Box can be installed by the way of wall-mounted or poled-mounted, suitable for both indoor and outdoor use.
- Wall Mount and Pole mount Install

Configuration



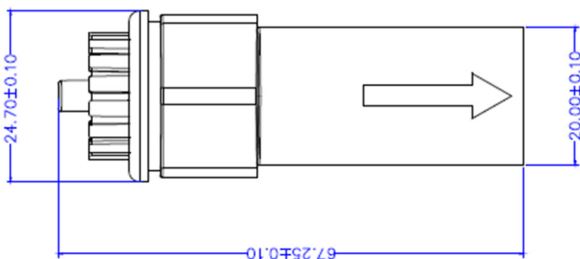
Part No.	Material	Input ports	Max Capacity	Number of Adapters	Color
CTO-8	PP+GF	4	36F,1 Splitter holder 1*2,1*4,1*8 mini type splitter	8	Black

Configuration

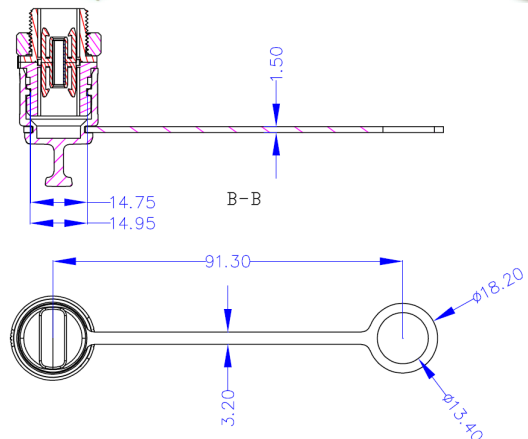


Part No.	Material	Input ports	Max Capacity		Number of Adapters	Color
CTO-16	PP+GF	4	36F,1 Splitter holder	1*2,1*4,1*8,1*16 mini type splitter	16	Black

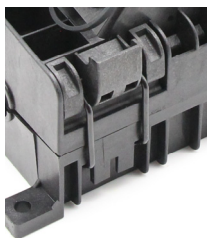
Universal Waterproof sealing kits



Waterproof SC Adapter



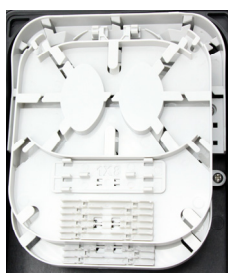
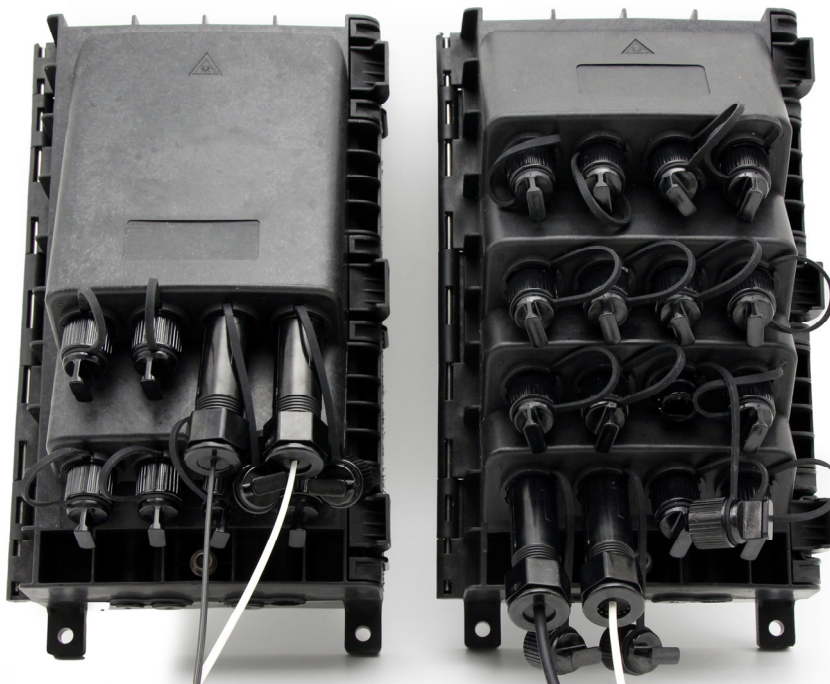
Product advantages



1, Auxiliary locking device,
Offer IP68 protection



2, Pre-Cut Rubber, Suit for
different OD cable, Very



3, Splitter holder & Splice
connection change flexible



5, Universal Waterproof sealing kits for pre-terminated connector, Easy to match with many connector, Low down cost in purchase and easy to install in project



4, 4 Main cable ports.
2 of Max 16mm OD cable ports
2 of Max 13mm OD cable ports

Working Environmental conditions:

1. Working temperature: -40°C ~ 60°C ;
2. Relative humidity: $\leq 93\%$ (at $+40^{\circ}\text{C}$);
3. Atmospheric pressure: 62kpa~101kpa
(Approximate elevation 0 ~ 5000m) ;
4. Insert Loss: $\leq 0.35\text{dB}$;
5. Return Loss: $\geq 50\text{dB}$;
6. Plug durability: >1000 times;
7. Insulation resistance: $\geq 1000\text{M}\Omega/500\text{V}(\text{DC})$;
8. Grounding resistance : $>3000\text{V}(\text{DC})/1\text{min}$ without breakdown, flashover



6, High quality Waterproof
Adapter, Fast insert, Make
connection easy