

SPECIFICATION

FTTX PRE-CONNECTORIZED TERMINAL BOX PTB-12B



Description

It consists of 12x outlet PORTS, some Splice trays, a tissue system with optical fiber splicing tray and 12pcs bayonet type enhanced pre-connectorized waterproof Mini SCAPC adapters, which can be accessed and connected from the outside of the box.

The box is used as a termination point for the feeder cable to connect with drop cable in FTTx network system. The fiber splicing, splitting, and distribution can be done in this box, and to form the optical interconnection point between these networks and the distributed network. It allow the connection to a single optical plug in the customer's home on demand. and meanwhile it provides solid protection and management for the FTTx network building.

The closed box is completely sealed and weatherproof, so it can be installed outside and inside the exterior wall, wall, roof, basement, garage, yard, wardrobe, column or building installed on the messenger.

Specification:



Model No.	PTB-12B	Color	Black
Splice Capacity	4F Splice	Input Cable PORTS	1/2
Material	Plastic:PP+GF	Output Adapters	12x Mini SCAPC waterproof adapters<0.2dB
	Metal:Stainless steel 304		
Dimension	184*221*76 mm	Suitable Splitter	1*2+1:8 or 1 pcs of 1*8 (2:8) or 1 pcs of 1*9 blockless PLC Splitter
Flame retardant performance	Non-flame retardant	Protection Level	IP68 Indoor/Outdoor
Installation Method	Pole/wall-mounting, aerial cable-mounting	Insertion loss	≤0.2dB (1310nm & 1550nm)

Standard Accessories:

PTB-10D Box*1
Accessories bagx1

Optional Accessories:

Pole ring*1



Package:

Plastic bag size: 300*350 mm
Inner box with single corrugated size: 185*240*98mm
Carton with double corrugated size: 50*38*52cm (20PCS/Box),13.85KG



12 Ports FTTX Pre-connectorized Terminal Box PTB-12B

Features

1. Plug and play, pre-connected household cable instead of fusion, no need to open the box.
2. Fast insertion can fix and seal the optical cable outside the connector box for quick installation.
3. Clamping for feeder cable and drop cable, fiber splicing, fixation, storage, distribution...etc all in one.
4. Cable, pigtails, and patch cords are running through their own paths without disturbing each other, micro type PLC splitter installation, easy maintenance.
5. Support a variety of installation methods, holding pole, hanging wall, hanging cable.
6. Box can be installed by the way of wall-mounted or poled-mounted, suitable for both indoor and outdoor use.
7. wet-proof, water-proof, dust-proof, anti-aging, protection level up to IP68

Specification

1、Environmental requirement

Working temperature: $-40^{\circ}\text{C} \sim +85^{\circ}\text{C}$

Relative humidity: $\leq 85\%$ ($+30^{\circ}\text{C}$)

Atmospheric pressure: $70\text{KPa} \sim 106\text{Kpa}$

2、Main technical datasheet:

Insertion loss: $\leq 0.2\text{dB}$

UPC return loss: $\geq 50\text{dB}$

APC return loss: $\geq 60\text{dB}$

3、Thunder-proof technical datasheet

The insulation resistance between the grounding device and the metal parts of the box is no less than $2 \times 10^4 \text{ M}\Omega/500\text{V}$ (DC) ; $IR \geq 2 \times 10^4 \text{ M}\Omega/500\text{V}$, The voltage resistance between the grounding device, and the box and its metal parts is no less than 3000V (DC) /min, no puncture, no flashover; $U \geq 3000\text{V}$

INSTALLATION INSTRUCTION

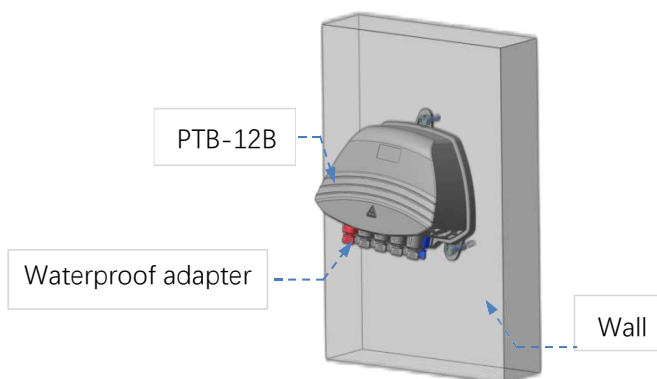
1,Pre-connectorized waterproof SCAPC adapters Details



2, Mini SC/APC Pre-connectorized Patch cord

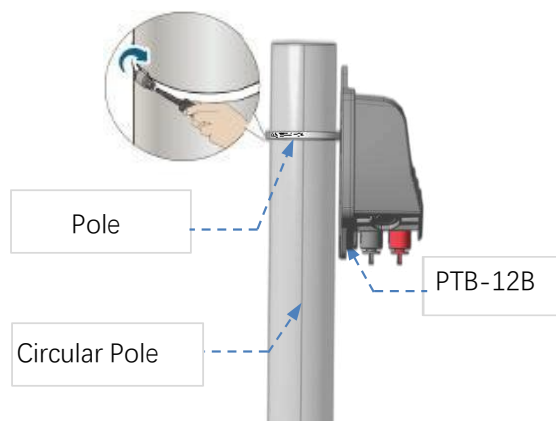
2, Wall-mounted installation

Drill 3 holes into the wall based on the size in table 1, place the expansion bolt $\Phi 7.5 \times 40$, place the box to match up the holes and use bolt to fasten

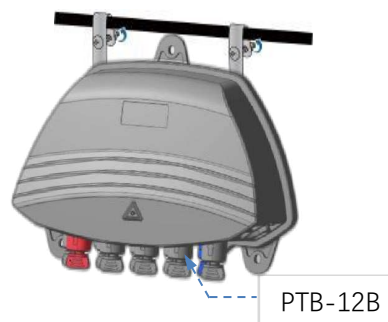
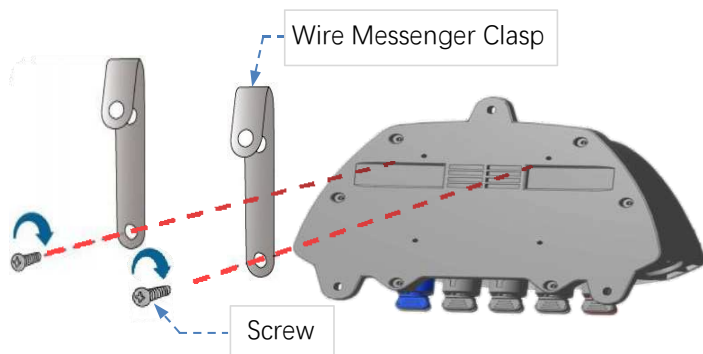


3. Pole-mounted installation

Fix 1 set of the pole ring to the telecom pole



4, Aerial cable-mounted Installation



5: Fiber storage bracket installation

