

SPECIFICATION

FTTH FIBER ACCESS TERMINAL BOX-IFATC-24B



Description

The FTTH Fiber Access Terminal box-IFATC-24C is used as a termination box for the feeder cable to connect with drop cable in FTTx communication network system. The fiber splicing, splitting, distribution can be done in this box, and meanwhile it provides solid protection and management for the FTTx network building. It can offer 24 FTTH subscribers access points.

Specification:



IFATC-24B1



IFATC-24B2

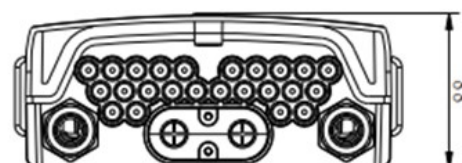
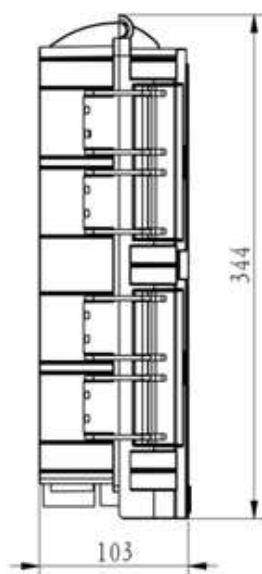
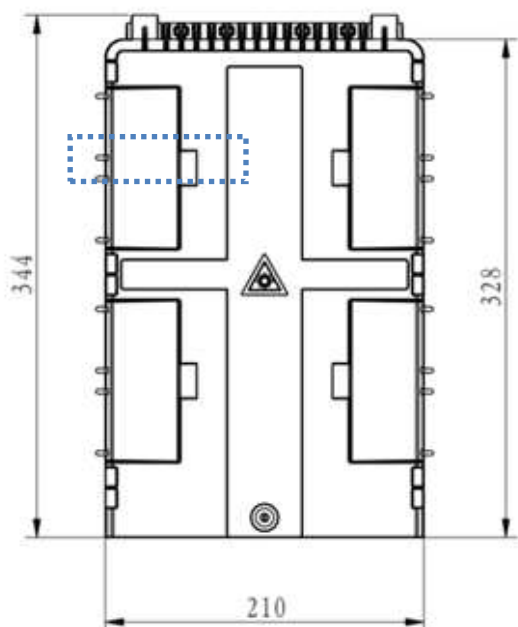


IFATC-24B3



Splice tray-24B

| | | | |
|---------------------|-----------------------|-----------------------------|---------------------------------|
| Model No. | IFATC-24C | Color | Black, Grey White.. |
| Capacity | 24ports SC+96F Splice | Protection Level | IP65 Indoor/Outdoor |
| Material | PC+ABS, ABS | Flame retardant performance | Non-flame retardant |
| Dimension(L*W*D,MM) | 344*210*88 | Splitter | Can be with 4x1:8 tube splitter |
| Input Cable OD | 8-15mm | Output cable OD | 2.0-5.0mm FTTH Cable x24 |
| Installation Method | Wall mounted | Insertion loss | ≤0.2dB (1310nm & 1550nm) |



Features

- 1、 Total enclosed structure.
- 2、 Material: PC+ABS, wet-proof、 water-proof、 dust-proof、 anti-aging, protection level up to IP65/66。
- 3、 Clamping for feeder cable and drop cable, fiber splicing, fixation, storage, distribution...etc all in one.
- 4、 Cable, pigtails, and patch cords are running through their own paths without disturbing each other, micro type PLC splitter installation, easy maintenance.
- 5、 Distribution panel can be flipped up, feeder cable can be placed by expression port,easy for maintenance and installation.
- 6、 Box can be installed by the way of wall-mounted or poled-mounted, suitable for both indoor and outdoor use.

Specification

1、 Environmental requirement

Working temperature: $-40^{\circ}\text{C} \sim +85^{\circ}\text{C}$ Relative humidity: $\leq 85\%$ ($+30^{\circ}\text{C}$) Atmospheric pressure: $70\text{KPa} \sim 106\text{KPa}$

2、 Main technical datasheet:

Insertion loss: $\leq 0.15\text{dB}$ UPC return loss: $\geq 50\text{dB}$ APC return loss: $\geq 60\text{dB}$

3、 Thunder-proof technical datasheet

The insulation resistance between the grounding device and the metal parts of the box is no less than $2 \times 10^4 \text{ M}\Omega/500\text{V}$ (DC) ; $IR \geq 2 \times 10^4 \text{ M}\Omega/500\text{V}$, The voltage resistance between the grounding device, and the box and its metal parts is no less than 3000V (DC) /min, no puncture, no flashover; $U \geq 3000\text{V}$

Package Information

Plastic bag size: $500 \times 410\text{mm}$

Inner box with single corrugated size: $355 \times 225 \times 115\text{mm}$

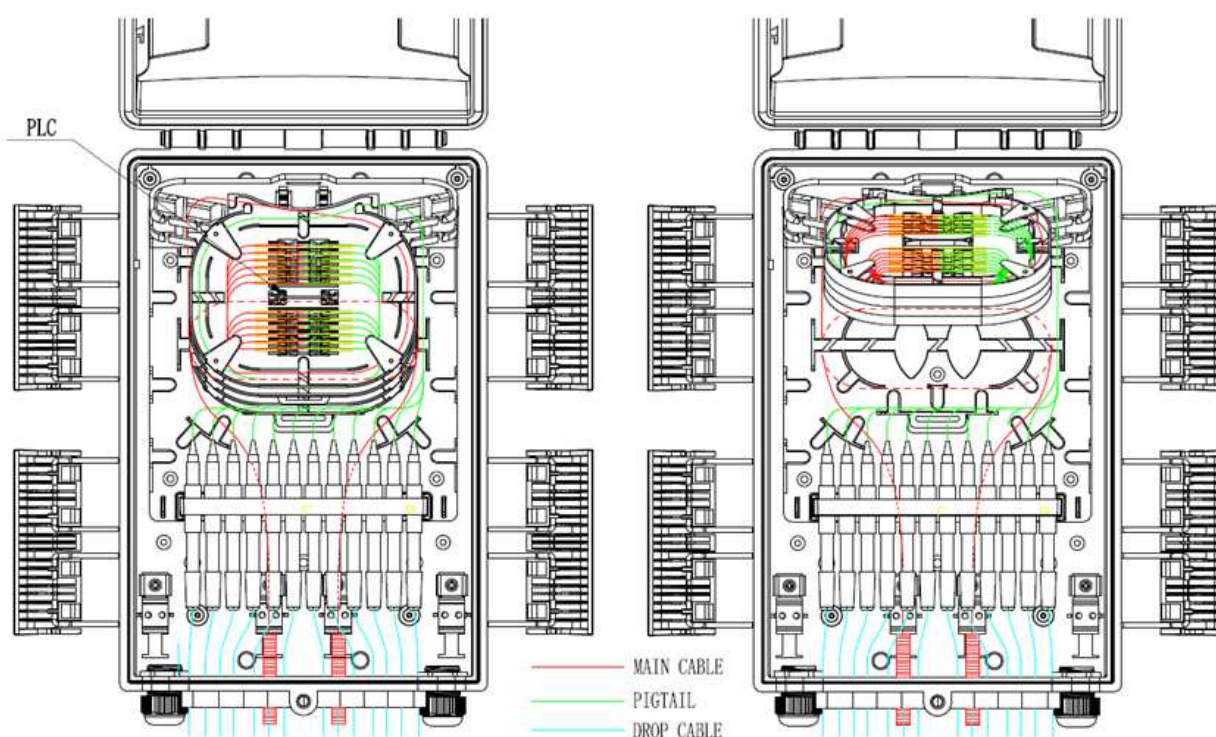
Carton with double corrugated size: $605 \times 370 \times 475\text{mm}$ (10PCS/Box)

Weight per carton: 21KG

Application

Optical Telecommunication System,
LAN, Optical fiber Communication System
Optical fiber broadband access network
FTTH access network

Product cable ways



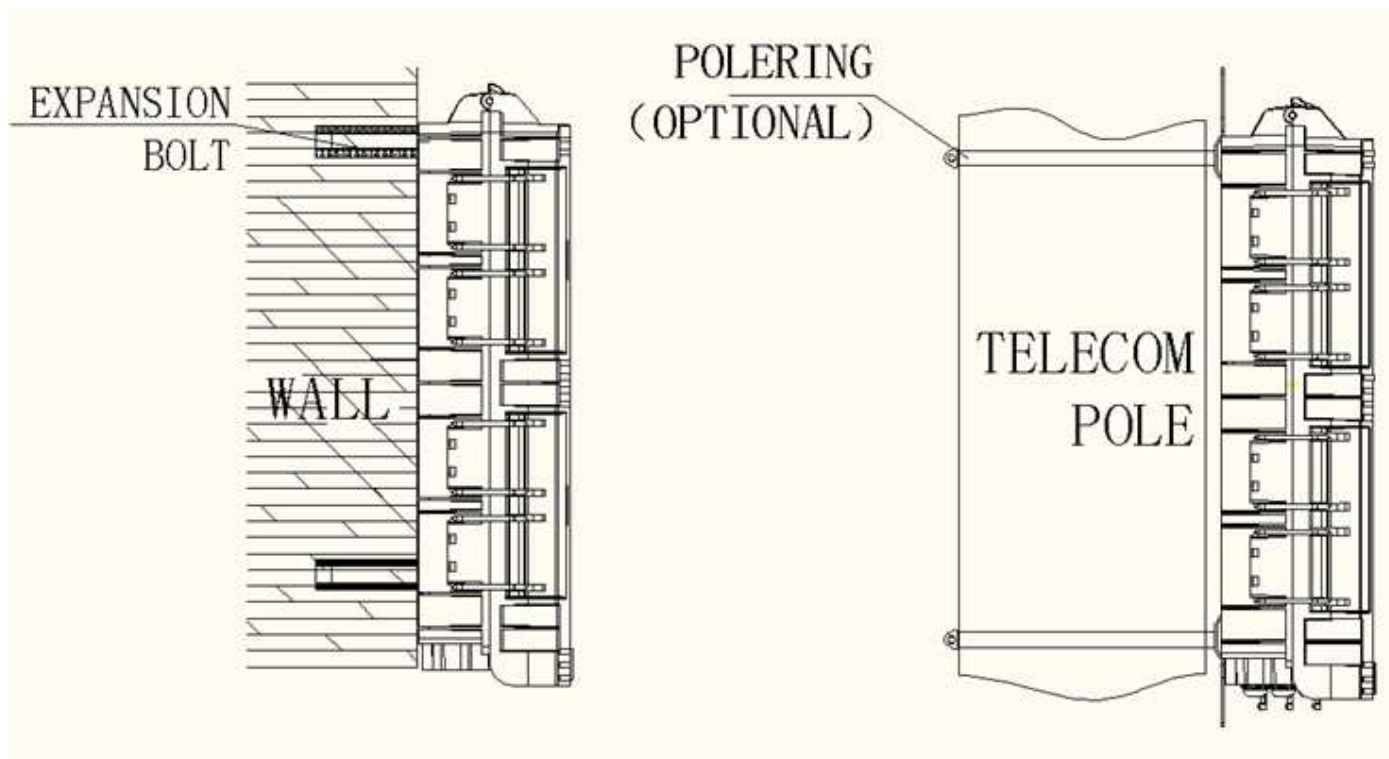
Installation

1. Wall-mounted installation

Drill 4 holes over the wall based on the size, place the expansion bolt $\Phi 7.5 \times 40$, place the box to match up the holes and use bolt to fasten.

2. Pole-mounted installation

Fix 1 set of the easy pole ring to the telecom pole



Accessories:

1. Users' Manual*1.
2. Key*1.
3. Accessories Bag * 1
4. Easy pole ring*2 (Option)