

DATASHEET

1-12F FTTH Access Point (AP) outlet kits

A product for last 100m's solution of FTTH Network



OMC INDUSTRY CO.LIMITED

Description

FTTH AP outlet kits included A Fiber faceplate ,A FTTH drop pigtail/Patch cord, A paper drum suit.

It assembled with FTTH Drop indoor cable (flat or round) / FTTH Aerial Self-support Drop cable for installation in flush-mounted box and cable entry to the BEP (Building entry point) cable side BEP smooth cut for splicing. Packed in single carton.

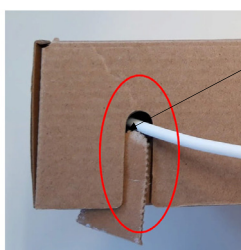
The installer just need **Only one fiber splicing or one connector insertion to BEP(building entry point) cable, So it is the fastest and the most labor cost-efficient solution in FTTH projects.** The user can get high speed optical network easily.

Optical Specifications

Connector	SC&LC	Polish	APC/UPC
Fiber Mode	9/125μm, G657A2&G657B3	Jacket Color	Black/White/Grey/Ivory
Main Cable OD	3.0mm –5.0mm	Wavelength	SM:1310/1550nm
Cable Structure	Simplex	Jacket Material	LSZH
Insertion loss	≤0.3dB(IEC Grade C) ≤0.1dB(IEC Grade B)	Interchangeability &Vibration	≤0.2dB
Return loss	SM APC ≥ 60dB(min)	Operation&Storage temperature	-40~85°C

Products details– Paper Drum +package Carton

Pre-cut in the cardboard box to extract the cable through the opening



Dimension: 24.5x24.5x6cm



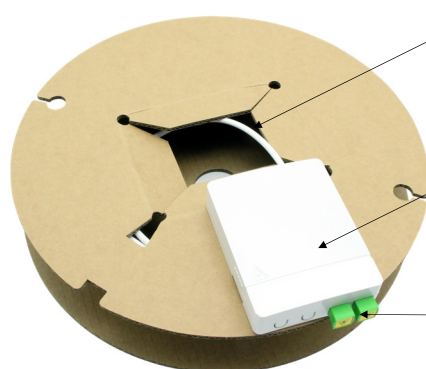
Dimension: 31x6cm

1-2F cable

1-12F Fiber Face plate

1, Standard Fiber adapter

2, Adapter with auto shutter cap

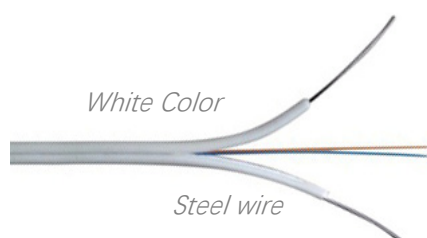
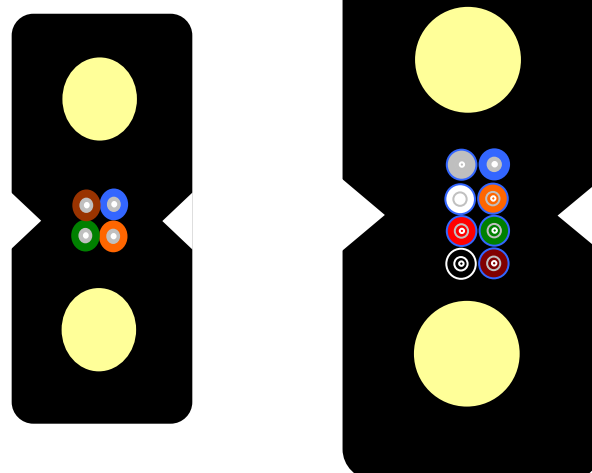
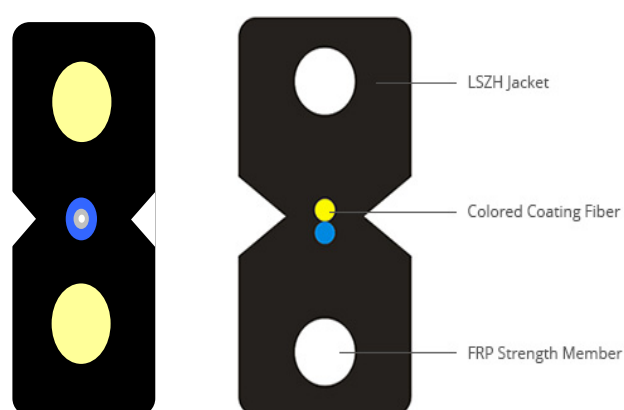


Products details– Flat cable type Indoor

1, Butterfly Flat FTTH Drop indoor cable

Available for

- G657A1, G657A2/B2, G657B3,
- 1-12 Fibers
- Black or White LSZH , Anti-UV



Cable Specification:

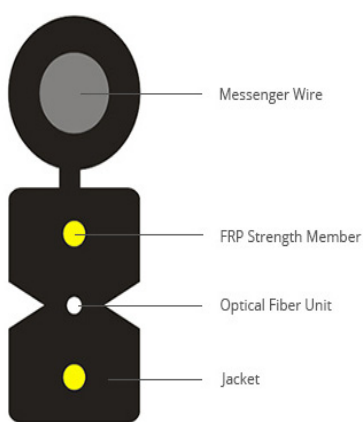
Fiber Count	1F	2F	4F	6F-12F
Strength member(mm)	FRP/KFRP/ Solid Steel wire			
	0.45-0.52	0.45-0.52	0.45-0.52	0.45-0.52
Cable diameter(mm) Approx.	2.0*3.0(±0.1) 2.0*1.6(±0.1)	2.0*3.0(±0.1)	2.0*3.0(±0.1)	4.0(±0.2) *2.8 (±0.2)
Cable weight(kg/km) Approx	7.5/10.5	7.5/10.5	8.5/11.5	26.5/30.5
Tensile Strength Short/ Long Term (N)	200/100 for steel wire strength member			
	80/40 for KFRP wire strength member			
Outer sheath	LSZH in White/Black/——-colors			
Crush resistance short/long term (N/100mm)	1000/500			
Operating temperature range(°C)	-40°C ~+70°C			

Products details– Aerial Flat Drop Cable Outdoor

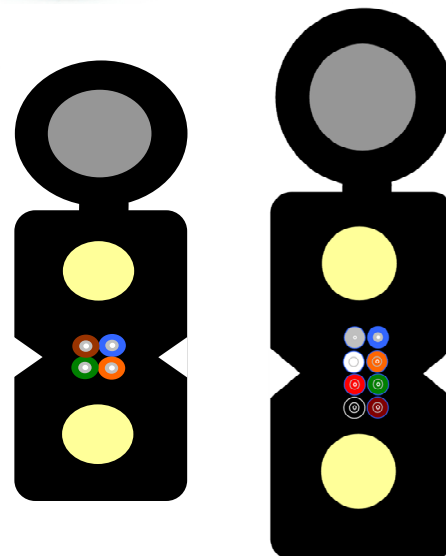
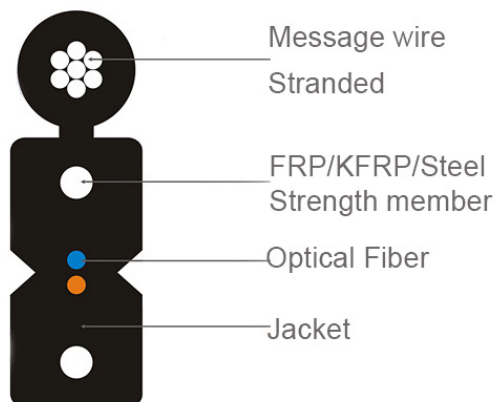
1, Aerial Self-support FTTH Drop cable

Available for

- G657A1,G657A2/B2,G657B3,
- 1-12 Fibers
- Black or Grey LSZH , Anti-UV



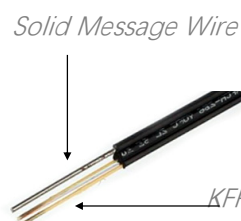
Stranded Message Wire



FRP Strength member



Solid steel Strength member



KFRP Strength member

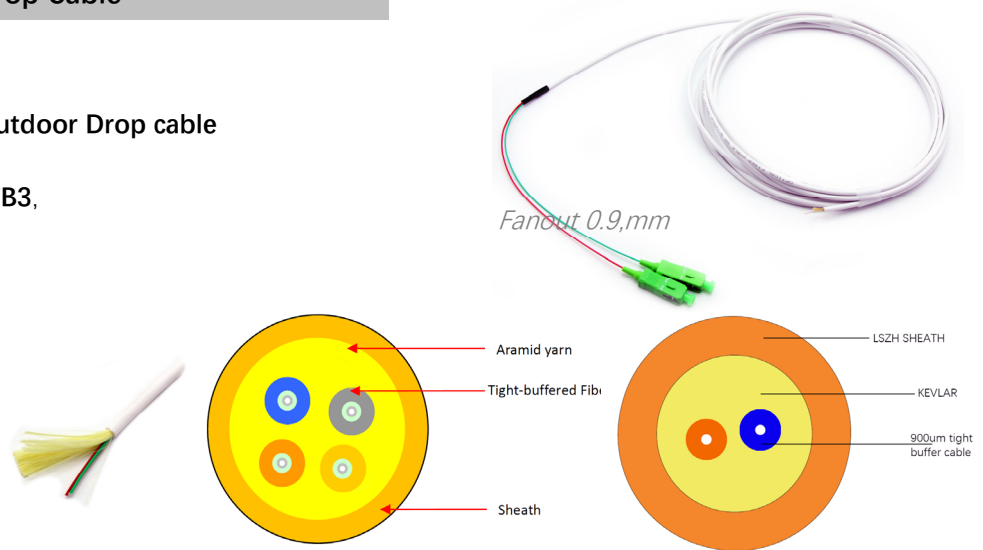
Fiber Count	1F	2F	4F	6F	8F/12F
Message Wire	Solid Steel wire/ Stranded Steel wire/FRP/KFRP 1.0mm or (7*0.4mm)-1.2mm				
Strength member	FRP/KFRP/Solid Steel wire 0.45-0.52mm				
Cable diameter(mm) Approx.	2.0*5.0(±0.1)	2.0*5.0(±0.1)	2.0*5.2(±0.1)	2.2*6.0(±0.1)	2.8*6.3(±0.1)
Cable weight(kg/km) Approx	18.5/20	19/20.5	20/21.5	21/22.5	34/35
Tensile Strength Short/ Long Term(N)	600/300 for Steel wire strength member+FRP Strength member 400/200 for FRP wire strength member+FRP Strength member				
Crush resistance short/ long term (N/100mm)	1000/500				
Operating temperature range(°C)	-40°C ~+70°C				

Products details– Round Drop Cable

1, Multi core Round indoor/Outdoor Drop cable

Available for

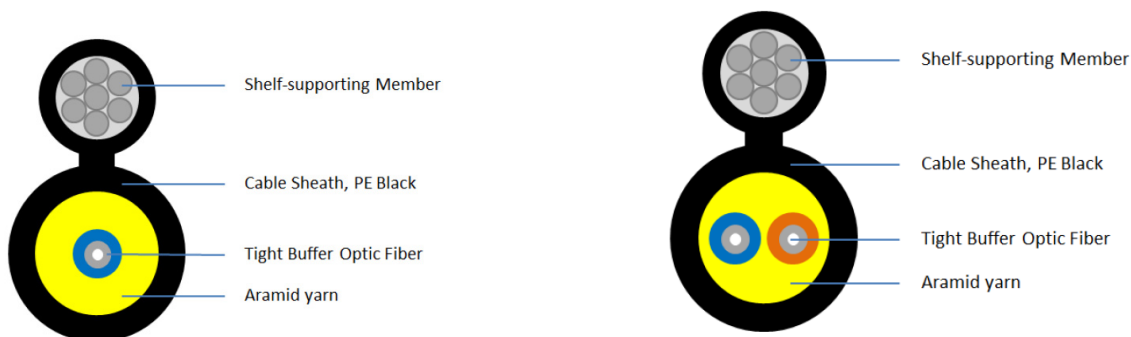
- G657A1,G657A2/B2,G657B3,
- 1-4 Fibers
- Black or White or Others



Technical Data:

Fiber Count	1F	2F	4F
Cable diameter (mm)	3.0mm,4.0mm	4.0mm	4.5mm
Unit cable	Colored 600um-900um of Loose buffer or Tight buffer		
Tensile Strength	Long term: 150N, Short Term:400N		
Cable Jacket	LSZH, TPU,PE		
CPR Level	No CPR certificated, Dca, Cca		

Products details– Fig 8 Drop Cable



2, Self-supporting Round indoor/Outdoor Drop cable

Available for

- G657A1,G657A2/B2,G657B3,
- 1-2 Fibers
- Black or White or Others

Technical Data:

Fiber Count	1F	2F
Cable diameter (mm)	(3.0±0.15) mm× (5.4±0.5) mm	(3.5±0.15) mm× (6.4±0.5) mm
Unit cable	Colored 600um of Loose buffer or Tight buffer	
Strength Remember	Steel strand, 7*0.4-1.2mm	
Tensile Strength	Long term: 300N, Short Term:600N	
Cable Jacket	LSZH, TPU,PE	
CPR Level	No CPR certificated, Dca, Cca	



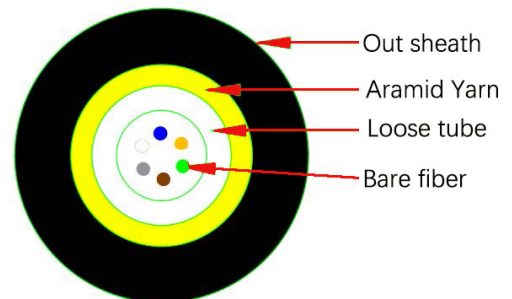
FTTH Access Point(AP) outlet kits

Products details– Central Loose tube Round Drop Cable

3, Central Loose tube round cable

Available for

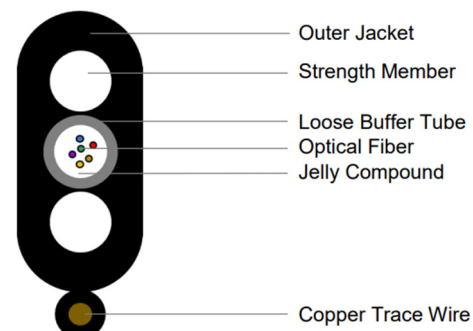
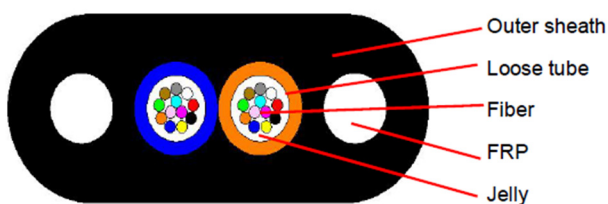
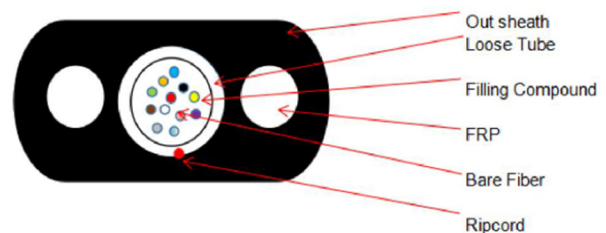
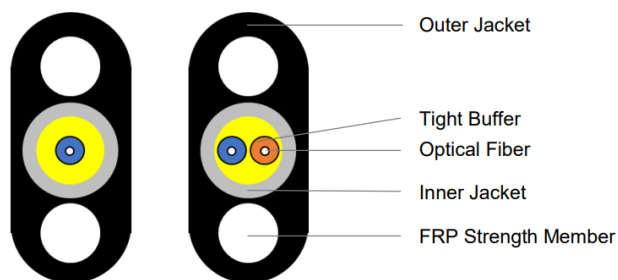
- G657A1,G657A2/B2,G657B3,
- 1-12 Fibers
- Black or White or Others



Technical Data:

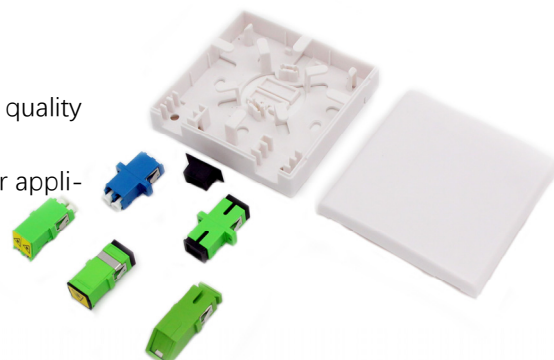
Fiber Count	1-12F
Cable diameter(mm) Approx.	3.0-4.0mm
Loose Tube	PBT 1.7mm OD
Unit cable	Colored 250um bare fiber
Tensile Strength	Long term: 80N-150N, Short Term:200-400N
Cable Jacket	LSZH, TPU,PE
CPR Level	No CPR certificated, Dca, Cca

Products details– New Flat Drop Cable



Products details– Fiber Face plate
Fiber socket: FS-1A

- Water-proof design with IP-45 Protection level.
- Integrated with cable termination and management rods
- Manage fibers in a reasonable fiber radius(30mm) condition. High quality industrial anti-aging ABS plastic material.
- Suitable for the wall mounted installation. Suitable for FTTH indoor application.
- 2/4 port cable entrance for drop cable or patch cable.
- Fiber adapter can be installed in the rosette for patching.
- UL94-V0 fire-retardant material can be customized as option.



Part NO	Material	Size	Max Capacity		Mounting Way	Package	Color
FS-1A	Industrial ABS	L*W*H(mm) 86*86*25	SC Simplex 2 Cores	LC Duplex 4 Cores	Wall Mounting or in- side FTTH media box application	PE bag or OEM	White

Fiber socket: FS-1E

- Water-proof design with IP-45 Protection level.
- Integrated with cable termination and management rods
- Manage fibers in a reasonable fiber radius(30mm) condition. High quality industrial anti-aging ABS plastic material.
- Suitable for the wall mounted installation. Suitable for FTTH indoor application.
- 1/2 port cable entrance for drop cable or patch cable.
- Fiber adapter can be installed in the rosette for patching.
- UL94-V0 fire-retardant material can be customized as option.



Transparent dust cover

Part NO	Material	Size	Max Capacity		Mounting Way	Package	Color
FS-1E	Industrial ABS	L*W*H(mm) 115*86*23	SC Simplex 1 Core	LC Duplex 2 Cores	Wall Mounting or in- side FTTH media box application	PE bag or OEM	White

Fiber socket: FS-2B

- Water-proof design with IP-45 Protection level.
- Integrated with cable termination and management rods
- Manage fibers in a reasonable fiber radius(30mm) condition. High quality industrial anti-aging ABS plastic material.
- Suitable for the wall mounted installation. Suitable for FTTH indoor application.
- 2/4 port cable entrance for drop cable or patch cable.
- Fiber adapter can be installed in the rosette for patching.
- UL94-V0 fire-retardant material can be customized as option.



Part NO	Material	Size	Max Capacity		Mounting Way	Package	Color
FS-2B	Industrial ABS	L*W*H(mm) 105*83*24	SC SX 2 Cores	LC DX 4 Cores	Wall Mounting or in- side FTTH media box application	PE bag or OEM	White

Products details– Fiber Face plate
Fiber socket: FS-2C

- Water-proof design with IP-45 Protection level.
- Integrated with cable termination and management rods
- Manage fibers in a reasonable fiber radius(30mm) condition. High quality industrial anti-aging ABS plastic material.
- Suitable for the wall mounted installation. Suitable for FTTH indoor application.
- 2/4 port cable entrance for drop cable or patch cable.
- Fiber adapter can be installed in the rosette for patching.
- UL94-V0 fire-retardant material can be customized as option.

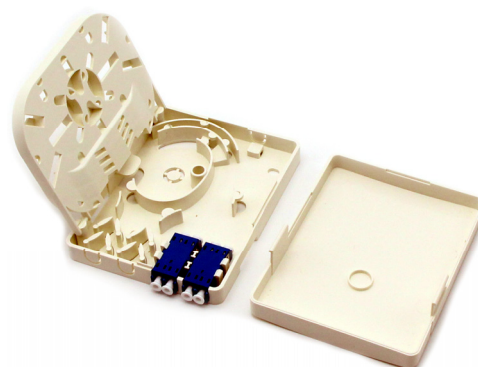


Transparent dust cover

Part NO	Material	Size	Max Capacity		Mounting Way	Package	Color
FS-2C	Industrial ABS	L*W*H(mm) 115*82*22	SC Duplex 2 Cores	LC Quad 4 Cores	Wall Mounting or in-side FTTH media box application	PE bag or OEM	White

Fiber socket: FS-2D

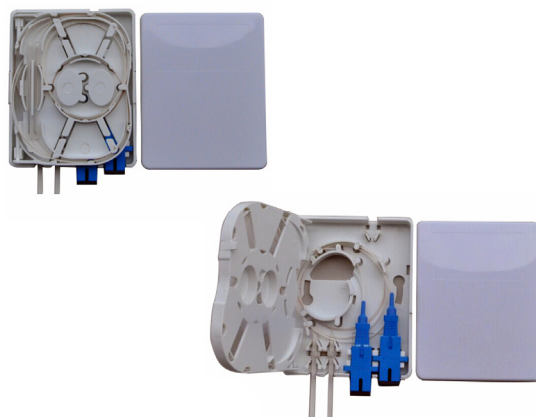
- Water-proof design with IP-45 Protection level.
- Integrated with cable termination and management rods
- Manage fibers in a reasonable fiber radius(30mm) condition. High quality industrial anti-aging ABS plastic material.
- Suitable for the wall mounted installation. Suitable for FTTH indoor application.
- 2/4 port cable entrance for drop cable or patch cable.
- Fiber adapter can be installed in the rosette for patching.
- UL94-V0 fire-retardant material can be customized as option.



Part NO	Material	Size	Max Capacity		Mounting Way	Package	Color
FS-2D	Industrial ABS	L*W*H(mm) 105*83*24	SC Simplex 2 Cores	LC Duplex 4 Cores	Wall Mounting or in-side FTTH media box application	PE bag+Kraft box or OEM	White

Fiber socket: FS-2F

- Water-proof design with IP-45 Protection level.
- Integrated with cable termination and management rods
- Manage fibers in a reasonable fiber radius(30mm) condition. High quality industrial anti-aging ABS plastic material.
- Suitable for the wall mounted installation. Suitable for FTTH indoor application.
- 2/4 port cable entrance for drop cable or patch cable.
- Fiber adapter can be installed in the rosette for patching.
- UL94-V0 fire-retardant material can be customized as option.



Part NO	Material	Size	Max Capacity		Mounting Way	Package	Color
FS-2F	Industrial ABS	L*W*H(mm) 100*80*25	SC Simplex 2 Cores	LC Duplex 4 Cores	Wall Mounting or in-side FTTH media box application	PE bag+Kraft box or OEM	White

Products details– Fiber Face plate
Fiber socket: FS-4A

- Water-proof design with IP-45 Protection level.
- Integrated with cable termination and management rods
- Manage fibers in a reasonable fiber radius(30mm) condition. High quality industrial anti-aging ABS plastic material.
- Suitable for the wall mounted installation. Suitable for FTTH indoor application.
- 4/8 port cable entrance for drop cable or patch cable.
- Fiber adapter can be installed in the rosette for patching.
- UL94-V0 fire-retardant material can be customized as option.



Part NO	Material	Size	Max Capacity		Mounting Way	Package	Color
FS-4A	Industrial ABS	L*W*H(mm) 100*80*30	SC Simplex 4 Cores	LC Duplex 8 Cores	Wall Mounting or in- side FTTH media box application	PE bag+Kraft box or OEM	White

Fiber socket: FS-4B

- Water-proof design with IP-45 Protection level.
- Integrated with cable termination and management rods
- Manage fibers in a reasonable fiber radius(30mm) condition. High quality industrial anti-aging ABS plastic material.
- Suitable for the wall mounted installation. Suitable for FTTH indoor application.
- 4/8 port cable entrance for drop cable or patch cable.
- Fiber adapter can be installed in the rosette for patching.
- UL94-V0 fire-retardant material can be customized as option.



Part NO	Material	Size	Max Capacity		Mounting Way	Package	Color
FS-4B	Industrial ABS	L*W*H(mm) 150*110*30	SC Simplex 4 Cores	LC Duplex 8 Cores	Wall Mounting or in- side FTTH media box application	PE bag+Kraft box or OEM	White

Products details– Fiber Face plate
Fiber socket: FS-4C

- Water-proof design with IP-45 Protection level.
- Integrated with cable termination and management rods
- Manage fibers in a reasonable fiber radius(30mm) condition. High quality industrial anti-aging ABS plastic material.
- Suitable for the wall mounted installation. Suitable for FTTH indoor application.
- 4/8 port cable entrance for drop cable or patch cable.
- Fiber adapter can be installed in the rosette for patching.
- UL94-V0 fire-retardant material can be customized as option.



Part NO	Material	Size	Max Capacity		Mounting Way	Package	Color
FS-4C	Industrial ABS	L*W*H(mm) 100*83*30	SC Simplex 4 Cores	LC Duplex 8 Cores	Wall Mounting or in- side FTTH media box application	PE bag+Kraft box or OEM	White

Fiber socket: FS-4D

- Water-proof design with IP-45 Protection level.
- Integrated with cable termination and management rods
- Manage fibers in a reasonable fiber radius(30mm) condition. High quality industrial anti-aging ABS plastic material.
- Suitable for the wall mounted installation. Suitable for FTTH indoor application.
- 4/8 port cable entrance for drop cable or patch cable.
- Fiber adapter can be installed in the rosette for patching.

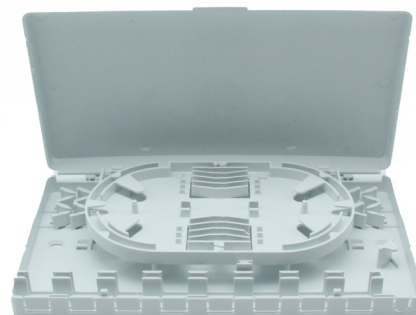


Part NO	Material	Size	Max Capacity		Mounting Way	Package	Color
FS-4D	Industrial ABS	L*W*H(mm) 152*110*30	SC Simplex 4 Cores	LC Duplex 8 Cores	Wall Mounting or in- side FTTH media box application	PE bag+Kraft box or OEM	White

Products details– Fiber Face plate

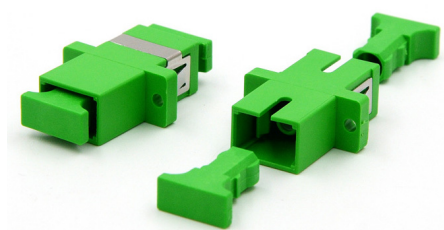
Fiber socket: FS-8A

- Water-proof design with IP-45 Protection level.
- Integrated with cable termination and management rods
- Manage fibers in a reasonable fiber radius(30mm) condition. High quality industrial anti-aging ABS plastic material.
- Suitable for the wall mounted installation. Suitable for FTTH indoor application.
- 8/16 ports cable entrance for drop cable or patch cable.
- Fiber adapter can be installed in the rosette for patching.
- UL94-V0 fire-retardant material can be customized as option.

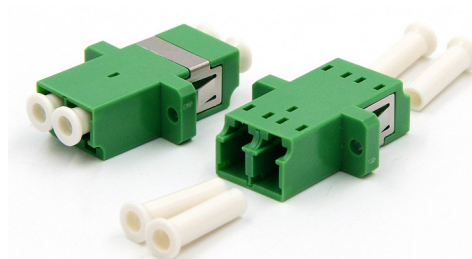


Part NO	Material	Size	Max Capacity		Mounting Way	Package	Color
FS-8A	Industrial ABS	L*W*H(mm) 207*115*28	SC Simplex 8 Cores	LC Duplex 16 Cores	Wall Mounting or in- side FTTH media box application	PE bag+Kraft box or OEM	White

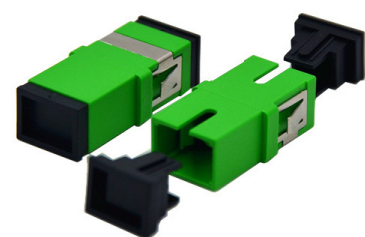
Products details– Fiber Adapter



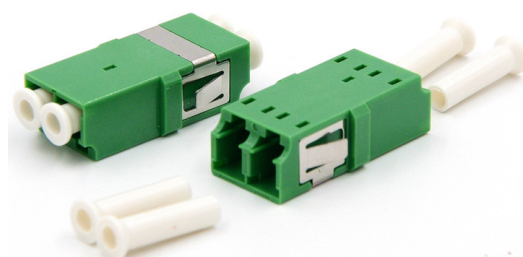
SC Simplex with Flange



LC Duplex with Flange



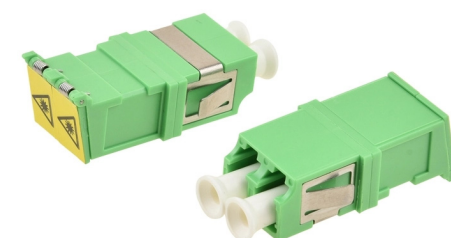
SC Simplex without Flange



LC Duplex without Flange



SC Simplex without Flange with Shutter



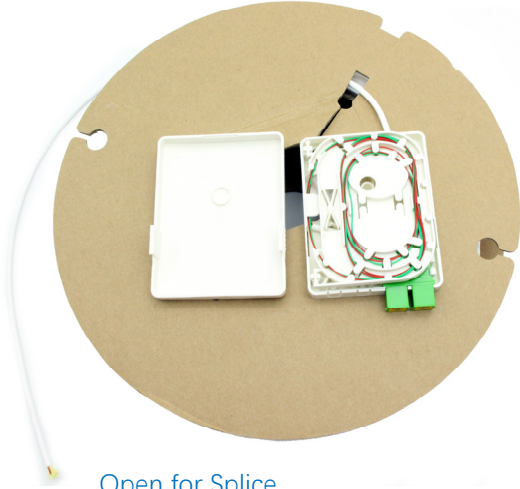
LC Duplex without Flange with Shutter



FTTH Access Point(AP) outlet kits

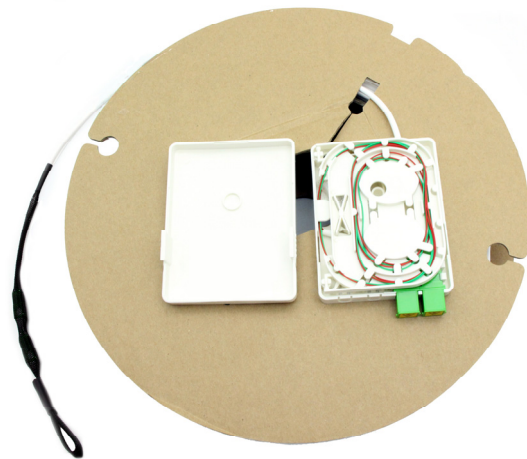
Products details– Fiber Pigtail/Patch cord in drum

Pigtail



Open for Splice

Patch cord



Connector assembled for connection directly.

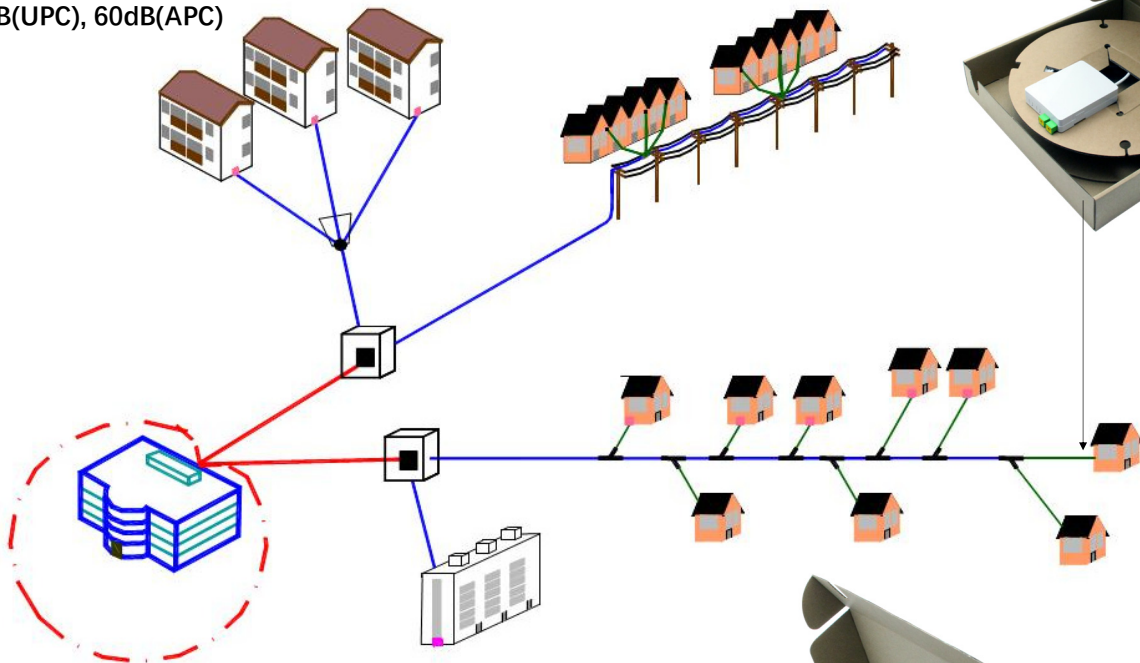
Application

A product for last 100m's solution of FTTH

High quality:

IL<0.3dB(Max)

RL>50dB(UPC), 60dB(APC)



Package

